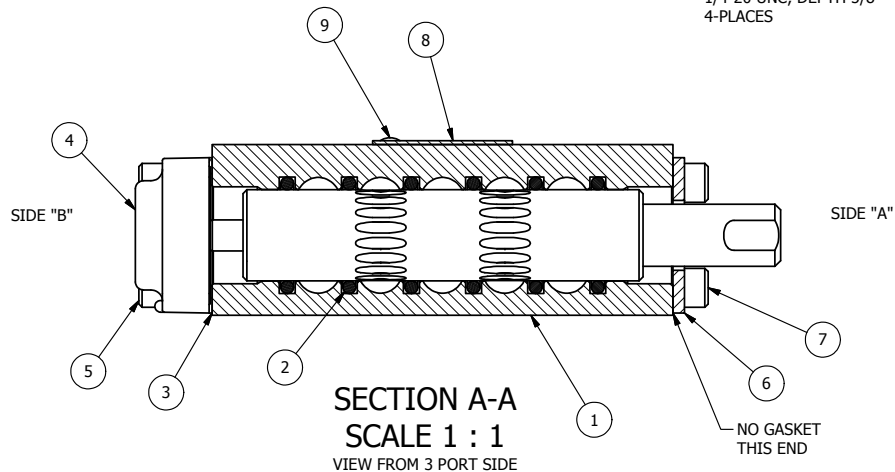


POSITION GASKET ON END OF VALVE SO
MOUNTING HOLES ALIGN,
SIDE 'B' ONLY

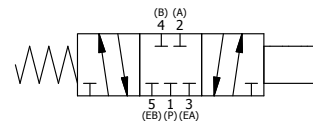
GREEN GREASE
GREEN O-RINGS



- NOTES:
1) ALWAYS GIVE VALVE MODEL, AND PART NUMBER WHEN ORDERING PARTS.
2) MOUNTING HOLES ARE TAPPED 1/4-20 UNC, THROUGH, 4-PLACES.

FLG	QTY	PART NO	DESCRIPTION
9	2	V-212	SCREW, #2 X 3/16 DRIVE, TYPE U, OVAL HEAD, 316 STAINLESS STEEL
8	1	AN-114	NAME PLATE, BLANK, FOR VALVES WITH SPRINGS OR DETENTS.
7	4	V-37	SCREW, 10-24 X 1/2 SHCS, FOR 1/8" STEEL END CAPS
6	1	SEC3-5	END CAP, STUD, STEEL, ZINC PLTD, 1/4" & 3/8" VALVE
5	4	V-38	SCREW, 10-24 X 3/4 SHCS, FOR 3/8" CAST END CAP
4	1	AY-446VY	SPRING CENTER SPOOL ASSY, 446VY INT. THREADED STUD, 1/4" & 3/8" VALVES
3	1	ECG3	GASKET - END CAP, 1/4" & 3/8" VALVE
2	6	V-39	O-RING, STD BODY, VITON, 1/4" & 3/8" VALVES
1	1	B2-2E-TM	BODY - SOLID, PLAIN, NO PILOTS, 1/4-20 MNTG HOLES, 1/4" SIDE PORT VALVE

LIMITS ON DIMENSIONS UNLESS OTHERWISE SPECIFIED		2-PL DECIMAL ± .01 3-PL DECIMAL ± .005 FRACTIONAL ± 1/64 ANGULAR ± 1/2°	AAA PRODUCTS INTERNATIONAL 7114 Harry Hines Blvd Dallas, TX 75235
DRAWN: RMckenna	DATE: 6/2/2010	CHECKED: KWaite	
SCALE: 1 : 1	SHEET: 1 OF 1	RELEASED: HWomack	DATE: 1/8/2013
TITLE: 1/4" SIDE PORT, STUD, 3 POS, SPR CTR, PULL RTRN, CLSD CTR SPL, LIFT ASSIST (8184878)			PART NO.: 639VY



THE INFORMATION CONTAINED WITHIN THIS DOCUMENT IS PROPRIETARY TO AAA PRODUCTS AND MAY NOT BE DISCLOSED WITHOUT PRIOR WRITTEN CONSENT

D:\Engineering\Inventory Files\Internal Drawings\Valves Assembly\Part\Special\639VY.dwg