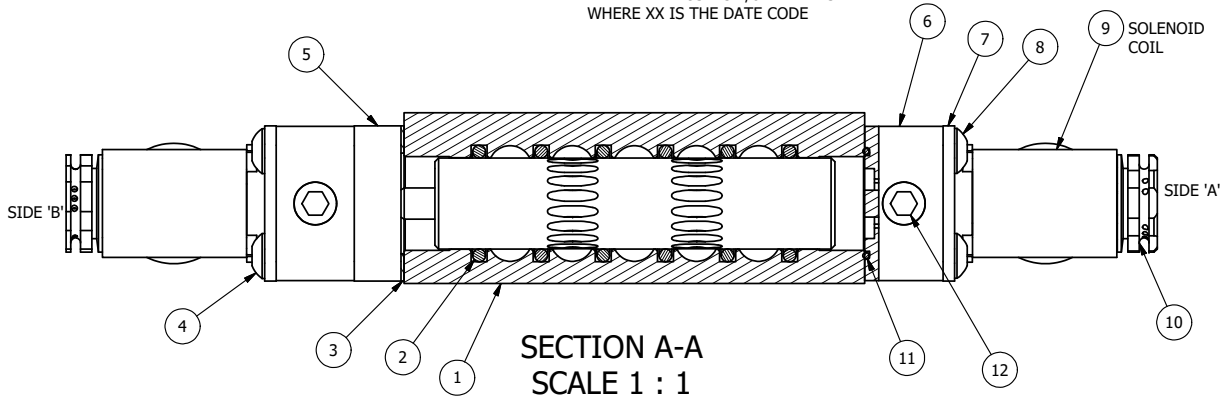


MARK VALVE USING 1/8" LETTERS WHERE XX IS THE DATE CODE

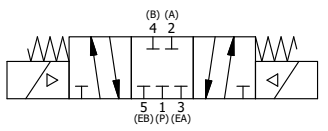


**SECTION A-A**  
SCALE 1 : 1  
VIEW FROM 3 PORT SIDE

- NOTES:  
 1) ALWAYS GIVE VALVE MODEL AND PART NUMBER WHEN ORDERING PARTS.  
 2) FOR DIFFERENT VOLTAGES OTHER THAN 120/60, REPLACE SOLENOID COIL WITH COIL LISTED IN TABLE BELOW.

|     |     |          |  |
|-----|-----|----------|--|
| 12  | 2   | V-19-SS  | PLUG, SOCKET PIPE 1/8"-27 NPT, 7/8 TAPER, PLAIN, FLUSH SEAL, STAINLESS STEEL |
| 11  | 2   | EMG3     | GASKET - END MOUNT SOLENOID, BUNA-N, 1/4" & 3/8" VALVES                      |
| 10  | 2   | V-562    | NUT, SOLENOID, SIDE EXHAUST  |
| 9   | 2   | V-600-1  | COIL - 1/2 NPTF HUB 120V 50/60HZ, NASS P/N 0561 44.1-00/4984                 |
| 8   | 4   | V-584-SS | SCREW, 10-24 X 1, BUTTON HEAD SOCKET CAP, 18-8 OR 303 SS                     |
| 7   | 2   | SEC3-7   | PLATE, RE-INFORCEMENT, SOLENOID, STAMPED, 304 STAINLESS                      |
| 6   | 2   | V-550-1  | SOL OPER, END MOUNT, NON-LOCKING O'RIDE                                      |
| 5   | 1   | AY-ZEMY3 | ASSY - SPR CTR, CLSD CTR SPL, END MOUNT SOLENOID, BRASS, 1/4" & 3/8" VALVES  |
| 4   | 4   | V-601-SS | SCREW, 10-24 X 1-1/2, BUTTON HEAD SOCKET CAP, 18-8 SS OR EQUIVQLENT          |
| 3   | 1   | ECG3     | GASKET - END CAP, 1/4" & 3/8" VALVE  |
| 2   | 6   | V-39     | O-RING, VITON, STD BODY, 1/4" & 3/8" VALVES                                  |
| 1   | 1   | ZB3-1    | BODY - BRASS, UPPER PILOTS (BUTTON BLEEDER), 3/8" SIDE PORT VALVE            |
| FLG | QTY | PART NO  | DESCRIPTION  |

|  |                |  |                |  |
|--|----------------|--|----------------|--|
| LIMITS ON DIMENSIONS<br>UNLESS OTHERWISE SPECIFIED   |                | 2-PL DECIMAL ± .01<br>3-PL DECIMAL ± .005<br>FRACTIONAL ± 1/64<br>ANGULAR ± 1/2° |                | <b>AAA PRODUCTS INTERNATIONAL</b><br>7114 Harry Hines Blvd<br>Dallas, TX 75235 |
| DRAWN: RMckenna  | DATE: 4/7/2016 | CHECKED: KWaite  | DATE: 4/7/2016 |  |
| SCALE: 1 : 1   | SHEET: 1 OF 1  | RELEASED: HWomack  | DATE: 4/7/2016 |  |
| TITLE:<br><b>3/8" SIDE PORT, DBL SOL, 3 POS, SPR CTR, CLSD CTR SPL, BRASS &amp; SS, MOLD-OVER, 120/60, SIDE VENT</b> |                |  | PART NO.:      | REV.:  |
|  |                |  | ZESY3JC        |  |



| COIL VOLTAGES  |              |
|----------------|--------------|
| PART NO        | REPLACE COIL |
| ZESY3JC 240/60 | V-600-4      |
| ZESY3JC 24VDC  | V-600-3      |
| ZESY3JC 12VDC  | V-600-2      |

THE INFORMATION CONTAINED WITHIN THIS DOCUMENT IS PROPRIETARY TO AAA PRODUCTS AND MAY NOT BE DISCLOSED WITHOUT PRIOR WRITTEN CONSENT