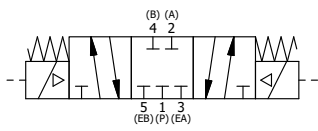


|     |     |          |   |
|-----|-----|----------|---|
| 11  | 2   | EMG3     | GASKET - END MOUNT SOLENOID, BUNA-N, 1/4" & 3/8" VALVES                     |
| 10  | 2   | V-567W   | E SERIES SINTERED BRONZE MUFFLER, DUST EXCLUDER, V-613 LOCK WASHER          |
| 9   | 2   | V-569-1  | SYSTEM 8 COIL 120 50/60.NASS # 0561 38.1 00/4984.                           |
| 8   | 4   | V-584-SS | SCREW, 10-24 X 1, BUTTON HEAD SOCKET CAP, 18-8 OR 303 SS                    |
| 7   | 2   | SEC3-7   | PLATE, RE-INFORCEMENT, SOLENOID, STAMPED, 304 STAINLESS                     |
| 6   | 2   | V-550-1  | SOL OPER, END MOUNT, NON-LOCKING O-RIDE                                     |
| 5   | 1   | AY-ZEMY3 | ASSY - SPR CTR, CLSD CTR SPL, END MOUNT SOLENOID, BRASS, 1/4" & 3/8" VALVES |
| 4   | 4   | V-601-SS | SCREW, 10-24 X 1-1/2, BUTTON HEAD SOCKET CAP, 18-8 SS OR EQUIVQLENT         |
| 3   | 1   | ECG3     | GASKET - END CAP, 1/4" & 3/8" VALVE   |
| 2   | 6   | V-39     | O-RING, VITON, STD BODY, 1/4" & 3/8" VALVES                                 |
| 1   | 1   | ZB2-1    | BODY - BRASS, UPPER PILOTS (BUTTON BLEEDER), 1/4" SIDE PORT VALVE           |
| FLG | QTY | PART NO  | DESCRIPTION   |

NOTES:  
 1) ALWAYS GIVE VALVE MODEL AND PART NUMBER WHEN ORDERING PARTS.  
 2) FOR DIFFERENT VOLTAGES OTHER THAN 120/60, REPLACE SOLENOID COIL WITH COIL LISTED IN TABLE BELOW.



| COIL VOLTAGES   |              |
|-----------------|--------------|
| PART NO         | REPLACE COIL |
| ZESY2MLZ 12VDC  | V-569-2      |
| ZESY2MLZ 24VDC  | V-569-3      |
| ZESY2MLZ 240/60 | V-569-4      |

|   |                 |  |                 |  |
|---|-----------------|--|-----------------|--|
| LIMITS ON DIMENSIONS UNLESS OTHERWISE SPECIFIED   |                 | 2-PL DECIMAL ± .01<br>3-PL DECIMAL ± .005<br>FRACTIONAL ± 1/64<br>ANGULAR ± 1/2° |                 | <b>AAA PRODUCTS INTERNATIONAL</b><br>7114 Harry Hines Blvd<br>Dallas, TX 75235 |
| DRAWN: RMckenna   | DATE: 5/27/2019 | CHECKED: KWaite  | DATE: 5/27/2019 |  |
| SCALE: 1 : 1  | SHEET: 1 OF 1   | RELEASED: HWomack  | DATE: 5/27/2019 |  |
| TITLE:<br><b>1/4" SIDE PORT, DBL SOL, 3 POS, CLSD SPR CTR, FLYING LEAD, 120/60, BR &amp; SS, DUST EXCLDR, EXT PILOT</b> |                 |  | PART NO.:       | REV.:  |
|   |                 |  | ZESY2MLZ        |  |

THE INFORMATION CONTAINED WITHIN THIS DOCUMENT IS PROPRIETARY TO AAA PRODUCTS AND MAY NOT BE DISCLOSED WITHOUT PRIOR WRITTEN CONSENT