

POSITION GASKET TO SEAL PILOT HOLE ON SIDE 'B' ONLY.

ALIGN PILOT AND SLOT IN ADAPTOR WITH GASKET IN BETWEEN SIDE 'A' ONLY FOR EXTERNAL PILOT OPERATION - ROTATE ADAPTOR 180 DEGREES. REMOVE 1/8" NPTF PLUG AND SUPPLY 50-150 PSI TO 1/8" NPTF PILOT PORT IN ADAPTOR.

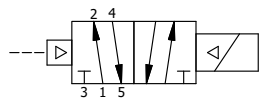
NOTES:  
 1) ALWAYS GIVE VALVE MODEL AND PART NUMBER WHEN ORDERING PARTS.  
 2) FOR DIFFERENT VOLTAGES OTHER THAN 120/60, REPLACE SOLENOID COIL WITH COIL LISTED IN TABLE BELOW.

|     |     |          |  |
|-----|-----|----------|--|
| 18  | 1   | ZNSPK-2  | KIT - SUBPLATE MOUNTING, BRASS NAMUR, (2 EA V-618-SS SCREW, 2 EA V-565 O-RING) |
| 17  | 1   | V-548    | O-RING, BUNA-N, 70 DURO, 6MM X 1MM, NAMUR PLUG                                 |
| 16  | 1   | V-547    | PLUG, 360 HALF HARD BRASS, NAMUR VALVE   |
| 13  | 1   | EMG3     | GASKET - END MOUNT SOLENOID, BUNA-N, 1/4" & 3/8" VALVES                        |
| 12  | 1   | V-19-SS  | PLUG, SOCKET PIPE 1/8"-27 NPT, 7/8 TAPER, PLAIN, FLUSH SEAL, STAINLESS STEEL   |
| 11  | 1   | V-567W   | E SERIES SINTERED BRONZE MUFFLER, DUST EXCLUDER, V-613 LOCK WASHER             |
| 10  | 1   | V-600-1  | COIL - 1/2 NPTF HUB 120V 50/60HZ, NASS P/N 0561 44.1-00/4984                   |
| 9   | 4   | V-584-SS | SCREW, 10-24 X 1, BUTTON HEAD SOCKET CAP, 18-8 OR 303 SS                       |
| 8   | 1   | SEC3-7   | PLATE, RE-INFORCEMENT, SOLENOID, STAMPED, 304 STAINLESS                        |
| 7   | 1   | V-599-1  | SOL OPER, END MOUNT, LOCKING O'RIDE  |
| 6   | 1   | S3R      | SPOOL - SOLID, STANDARD, 2 POS, CLSD CTR, 1/4" & 3/8" VALVE                    |
| 5   | 1   | PEC3-11  | END CAP, PILOT, STAINLESS STEEL, 1/4" & 3/8" VALVE                             |
| 4   | 4   | V-38-SS  | SCREW, 10-24 X 3/4, SOCKET HEAD CAP, 18-8 SS                                   |
| 3   | 1   | ECG3     | GASKET - END CAP, 1/4" & 3/8" VALVE  |
| 2   | 6   | V-39     | O-RING, VITON, STD BODY, 1/4" & 3/8" VALVES                                    |
| 1   | 1   | Z2-11    | BODY - BRASS, UPPER PILOTS (BUTTON BLEEDER), 1/4" NAMUR                        |
| FLG | QTY | PART NO  | DESCRIPTION  |

SECTION A-A  
 SCALE 1 : 1  
 VIEW FROM 3 PORT SIDE

|  |  |  |  |  |
|--|--|--|--|--|
| LIMITS ON DIMENSIONS UNLESS OTHERWISE SPECIFIED  |  | 2-PL DECIMAL ± .01<br>3-PL DECIMAL ± .005<br>FRACTIONAL ± 1/64<br>ANGULAR ± 1/2° |  | <br><b>AAA PRODUCTS INTERNATIONAL</b><br>7114 Harry Hines Blvd<br>Dallas, TX 75235 |
| DRAWN: RMckenna  |  | DATE: 2/13/2018  |  |  |
| SCALE: 1 : 1   |  | SHEET: 1 OF 1  |  | CHECKED: KWaite<br>DATE: 2/13/2018   |
| TITLE:<br>1/4" NAMUR, SNGL SOL, 2 POS,<br>PILOT RTRN, BR & SS, MOLD-OVER,<br>120/60, LCKNG OVRD, DUST EXCLDR |  | PART NO.:<br>ZNSR2JOL  |  | REV.:  |

| OPERATOR VOLTAGES |              |
|-------------------|--------------|
| PART NO           | REPLACE COIL |
| ZNSR2JOL 12VDC    | V-600-2      |
| ZNSR2JOL 24VDC    | V-600-3      |
| ZNSR2JOL 240/60   | V-600-4      |



THE INFORMATION CONTAINED WITHIN THIS DOCUMENT IS PROPRIETARY TO AAA PRODUCTS AND MAY NOT BE DISCLOSED WITHOUT PRIOR WRITTEN CONSENT