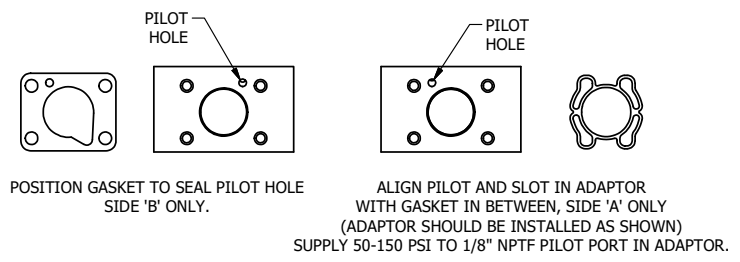


AAA PRODUCTS INT'L  
ZESR3XLZ  
XX  
WWW.AAAPRODUCTS.COM

MARK VALVE USING 1/8" LETTERS  
WHERE XX IS THE DATE CODE

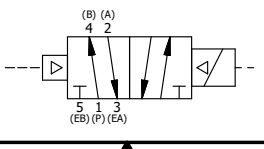
**SECTION A-A**  
**SCALE 1 : 1**  
VIEW FROM 3 PORT SIDE

- NOTES:  
1) ALWAYS GIVE VALVE MODEL AND PART NUMBER WHEN ORDERING PARTS.  
2) FOR DIFFERENT VOLTAGES OTHER THAN 120/60, REPLACE SOLENOID COIL WITH COIL LISTED IN TABLE BELOW.



| FLG | QTY | PART NO  | DESCRIPTION  |
|-----|-----|----------|--|
| 14  | 1   | V-607    | O-RING, VITON, 75 DURO, 14MM X 1MM, IP67 NUT SEAL                                |
| 13  | 2   | V-606    | O-RING, VITON, 75 DURO, 8MM X 1MM, IP67 STEM SEAL                                |
| 12  | 1   | EMG3     | GASKET - END MOUNT SOLENOID, BUNA-N, 1/4" & 3/8" VALVES                          |
| 11  | 1   | V-567W   | E SERIES SINTERED BRONZE MUFFLER, DUST EXCLUDER, V-613 LOCK WASHER               |
| 10  | 1   | V-593-1  | COIL - 120VAC EXP PROOF, 1/2" NPTF STAINLESS CONNECTION, NASS #0568 05.1-00/6874 |
| 9   | 4   | V-584-SS | SCREW, 10-24 X 1, BUTTON HEAD SOCKET CAP, 18-8 OR 303 SS                         |
| 8   | 1   | SEC3-7   | PLATE, RE-INFORCEMENT, SOLENOID, STAMPED, 304 STAINLESS                          |
| 7   | 1   | V-550-1  | SOL OPER, END MOUNT, NON-LOCKING O'RIDE  |
| 6   | 1   | S3R      | SPOOL - SOLID, STANDARD, 2 POS, CLSD CTR, 1/4" & 3/8" VALVE                      |
| 5   | 1   | PEC3-11  | END CAP, PILOT, STAINLESS STEEL, 1/4" & 3/8" VALVE                               |
| 4   | 4   | V-38-SS  | SCREW, 10-24 X 3/4, SOCKET HEAD CAP, 18-8 SS                                     |
| 3   | 1   | ECG3     | GASKET - END CAP, 1/4" & 3/8" VALVE  |
| 2   | 6   | V-39     | O-RING, VITON, STD BODY, 1/4" & 3/8" VALVES                                      |
| 1   | 1   | ZB3-1    | BODY - BRASS, UPPER PILOTS (BUTTON BLEEDER), 3/8" SIDE PORT VALVE                |

|   |  |  |  |   |       |
|---|--|--|--|---|-------|
| LIMITS ON DIMENSIONS<br>UNLESS OTHERWISE SPECIFIED  |  | 2-PL DECIMAL ± .01<br>3-PL DECIMAL ± .005<br>FRACTIONAL ± 1/64<br>ANGULAR ± 1/2° |  | <p><b>AAA PRODUCTS INTERNATIONAL</b><br/>7114 Harry Hines Blvd<br/>Dallas, TX 75235</p> |       |
| DRAWN: RMckenna   |  | DATE: 2/11/2019  |  |   |       |
| SCALE: 1 : 1  |  | SHEET: 1 OF 1  |  | CHECKED: KWaite    DATE: 2/11/2019<br>RELEASED: HWomack    DATE: 2/11/2019              |       |
| TITLE:<br><b>3/8" SIDE PORT, SNGL SOL, 2 POS,<br/>         PILOT RTRN, BR &amp; SS, EXPL PROOF,<br/>         120/60, DUST EXCLDR, EXT PILOT</b> |  |  |  | PART NO.:<br><b>ZESR3XLZ</b>  | REV.: |



| COIL VOLTAGES   |              |
|-----------------|--------------|
| PART NO         | REPLACE COIL |
| ZESR3XLZ 12VDC  | V-593-2      |
| ZESR3XLZ 24VDC  | V-593-3      |
| ZESR3XLZ 240/60 | V-593-4      |

THE INFORMATION CONTAINED WITHIN THIS DOCUMENT IS PROPRIETARY TO AAA PRODUCTS AND MAY NOT BE DISCLOSED WITHOUT PRIOR WRITTEN CONSENT