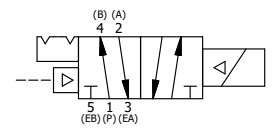


|     |     |            |  |
|-----|-----|------------|--|
| 20  | 1   | V-21-SS    | SCREW, 1/4-20 X 3/16, SOCKET SET, CUP POINT, 18-8 SS                         |
| 19  | 1   | DS3-1      | SPRING, DETENT, STAINLESS, 1/4" & 3/8" VALVE. LEE SPRING # LC 0298 0 S.      |
| 18  | 1   | V-14       | BALL, CHROME STEEL 3/16 DIA, GRADE 25, FOR DETENT                            |
| 17  | 1   | V-607      | O-RING, VITON, 75 DURO, 14MM X 1MM, IP67 NUT SEAL                            |
| 16  | 2   | V-606      | O-RING, VITON, 75 DURO, 8MM X 1MM, IP67 STEM SEAL                            |
| 15  | 1   | EMG3       | GASKET - END MOUNT SOLENOID, BUNA-N, 1/4" & 3/8" VALVES                      |
| 14  | 1   | V-19-SS    | PLUG, SOCKET PIPE 1/8"-27 NPT, 7/8 TAPER, PLAIN, FLUSH SEAL, STAINLESS STEEL |
| 13  | 1   | V-567W     | E SERIES SINTERED BRONZE MUFFLER, DUST EXCLUDER, V-613 LOCK WASHER           |
| 12  | 1   | V-600-1    | COIL - 1/2 NPTF HUB 120V 50/60HZ, NASS P/N 0561 44.1-00/4984                 |
| 11  | 4   | V-584-SS   | SCREW, 10-24 X 1, BUTTON HEAD SOCKET CAP, 18-8 OR 303 SS                     |
| 10  | 1   | SEC3-7     | PLATE, RE-INFORCEMENT, SOLENOID, STAMPED, 304 STAINLESS                      |
| 9   | 1   | V-599-1    | SOL OPER, END MOUNT, LOCKING O'RIDE  |
| 8   | 1   | S3R        | SPOOL - SOLID, STANDARD, 2 POS, CLSD CTR, 1/4" & 3/8" VALVE                  |
| 7   | 1   | PBS3-13-SS | STUD - POS. A & C. DETENT, STAINLESS STEEL, 1/4" & 3/8" VALVE                |
| 6   | 1   | PEC3-11    | END CAP, PILOT, STAINLESS STEEL, 1/4" & 3/8" VALVE                           |
| 5   | 4   | V-614-SS   | SCREW, 10-24 X 1-3/4", SOCKET HEAD CAP, 18-8 SS                              |
| 4   | 1   | PEC3-18-Z  | END CAP, SPACER, DETENT, SOLENOID, 360 BRASS, 1/4" & 3/8" VALVES             |
| 3   | 2   | ECG3       | GASKET - END CAP, 1/4" & 3/8" VALVE  |
| 2   | 6   | V-39       | O-RING, VITON, STD BODY, 1/4" & 3/8" VALVES                                  |
| 1   | 1   | ZB3-1      | BODY - BRASS, UPPER PILOTS (BUTTON BLEEDER), 3/8" SIDE PORT VALVE            |
| FLG | QTY | PART NO    | DESCRIPTION  |

- NOTES:  
 1) ALWAYS GIVE VALVE MODEL AND PART NUMBER WHEN ORDERING PARTS.  
 2) FOR DIFFERENT VOLTAGES OTHER THAN 120/60, REPLACE SOLENOID COIL WITH COIL LISTED IN TABLE BELOW.  
 3) LUBRICATE DETENT BALL, SPRING AND STUD.



| COIL VOLTAGES    |              |
|------------------|--------------|
| PART NO          | REPLACE COIL |
| ZESR3JOLQ 12VDC  | V-600-2      |
| ZESR3JOLQ 24VDC  | V-600-3      |
| ZESR3JOLQ 240/60 | V-600-4      |

|   |                 |  |  |       |
|---|-----------------|--|--|-------|
| LIMITS ON DIMENSIONS UNLESS OTHERWISE SPECIFIED   |                 | 2-PL DECIMAL ± .01<br>3-PL DECIMAL ± .005<br>FRACTIONAL ± 1/64<br>ANGULAR ± 1/2° | <b>AAA PRODUCTS INTERNATIONAL</b><br>7114 Harry Hines Blvd<br>Dallas, TX 75235 |       |
| DRAWN: RMckenna   | DATE: 6/18/2022 | CHECKED: KWaite  | DATE: 6/18/2022  |       |
| SCALE: 1 : 1  | SHEET: 1 OF 1   | RELEASED: HWomack  | DATE: 6/18/2022  |       |
| TITLE:<br>3/8" SIDE PORT, SNGL SOL, 2 POS, DTNT, PLT RTRN, MOLD-OVER, 120/60, BR & SS, LKNG OVRD, DUST EXCLDR |                 |  | PART NO.:<br>ZESR3JOLQ   | REV.: |

THE INFORMATION CONTAINED WITHIN THIS DOCUMENT IS PROPRIETARY TO AAA PRODUCTS AND MAY NOT BE DISCLOSED WITHOUT PRIOR WRITTEN CONSENT