

4

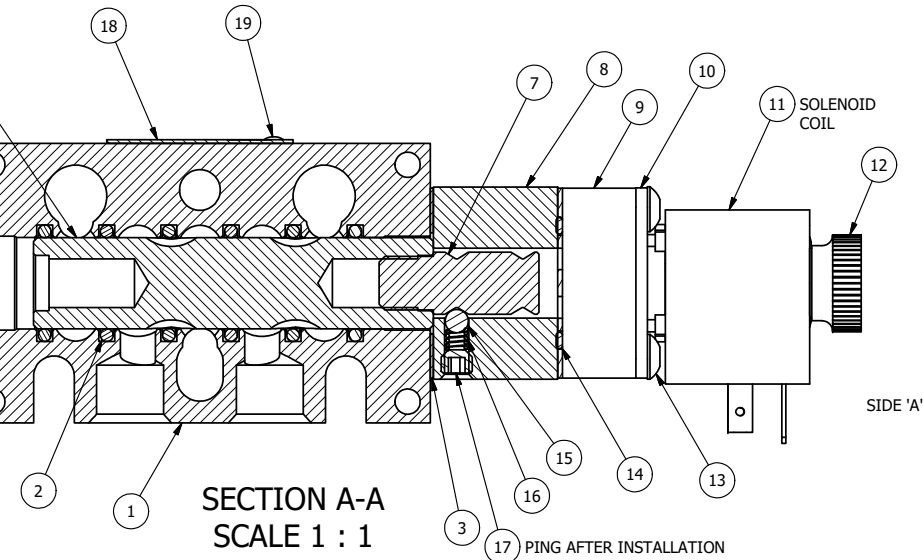
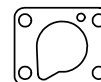
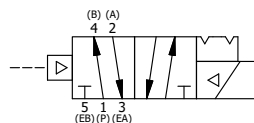
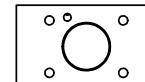
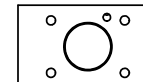
3

2

1

A

O-RING SIDE

SECTION A-A  
SCALE 1 : 1POSITION GASKET ON END OF VALVE  
TO SEAL PILOT HOLE  
SIDE 'B' ONLYALIGN PILOT AND SLOT IN ADAPTOR  
WITH GASKET IN BETWEEN SIDE 'A' ONLY  
FOR EXTERNAL PILOT OPERATION - ROTATE ADAPTOR  
180 DEGREES. REMOVE 1/8" NPTF PLUG AND  
SUPPLY 50-150 PSI TO 1/8" NPTF PILOT PORT IN ADAPTOR.

## NOTES:

- 1) ALWAYS GIVE VALVE MODEL AND PART NUMBER WHEN ORDERING PARTS.
- 2) FOR DIFFERENT VOLTAGES OTHER THAN 120/60, REPLACE SOLENOID COIL WITH COIL LISTED IN TABLE BELOW.
- 3) LUBRICATE DETENT BALL, SPRING AND STUD.

|     |     |         |   |
|-----|-----|---------|---|
| 20  | 3   | V-110   | O-RING, BUNA-N, 70 DURO, AS-114, (REF 5/8 X 13/16 X 3/32), 1/4" SLEEVE, 1/2" SUB, STACK |
| 19  | 2   | V-212   | SCREW, #2 X 3/16 DRIVE, TYPE U, OVAL HEAD, STAINLESS STEEL                              |
| 18  | 1   | AN-114  | NAMEPLATE, BLANK, FOR VALVES WITH SPRINGS OR DETENTS                                    |
| 17  | 1   | V-21    | SCREW, 1/4-20 X 3/16, SOCKET SET, CUP POINT   |
| 16  | 1   | DS3     | SPRING - DETENT, 1/4" & 3/8" VALVE  |
| 15  | 1   | V-14    | BALL, CHROME STEEL 3/16 DIA, GRADE 25, FOR DETENT                                       |
| 14  | 1   | EMG3    | GASKET - END MOUNT SOLENOID, BUNA-N, 1/4" & 3/8" VALVES                                 |
| 13  | 4   | V-585   | SCREW, 10-24 X 2-1/8, SOCKET BUTTON HEAD  |
| 12  | 1   | V-567W  | E SERIES SINTERED BRONZE MUFFLER, DUST EXCLUDER, V-613 LOCK WASHER                      |
| 11  | 1   | V-603-1 | COIL HI-TEMP. 8-30T 120/60. NASS # 0558 55.1-00/7121.                                   |
| 10  | 1   | SEC3-7  | PLATE, RE-INFORCEMENT, SOLENOID, STAMPED, 304 STAINLESS                                 |
| 9   | 1   | V-550-1 | SOL OPER, END MOUNT, NON-LOCKING O'RIDE   |
| 8   | 1   | PEC3-18 | ENDCAP, SPACER, DETENT, SOLENOID, 6061-T6, 1/4" & 3/8" VALVES                           |
| 7   | 1   | PBS3-13 | STUD - POS. A & C. DETENT, 1/4" & 3/8" VALVE  |
| 6   | 1   | S3R     | SPOOL - SOLID, STANDARD, 2 POS, CLSD CTR, 1/4" & 3/8" VALVE                             |
| 5   | 1   | PEC3    | END CAP, PILOT, 380 AL, 1/4" & 3/8" VALVE   |
| 4   | 4   | V-38    | SCREW, 10-24 X 3/4, SOCKET HEAD CAP   |
| 3   | 2   | ECG3    | GASKET - END CAP, 1/4" & 3/8" VALVE   |
| 2   | 6   | V-39    | O-RING, VITON, STD BODY, 1/4" & 3/8" VALVES   |
| 1   | 1   | B3-10E  | FINISHED - SOLID BODY, UPPER PILOTS, 3/8" STACKING VALVE                                |
| FLG | QTY | PART NO | DESCRIPTION   |

LIMITS ON DIMENSIONS  
UNLESS  
OTHERWISE SPECIFIED2-PL DECIMAL  $\pm .01$   
3-PL DECIMAL  $\pm .005$   
FRACTIONAL  $\pm 1/64$   
ANGULAR  $\pm 1/2^\circ$ **AAA PRODUCTS  
INTERNATIONAL**  
7114 Harry Hines Blvd  
Dallas, TX 75235

DRAWN: RMckenna

DATE: 6/17/2022

CHECKED: KWalte

DATE: 6/17/2022

SCALE: 1 : 1

SHEET: 1 OF 1

RELEASED: HWomack

DATE: 6/17/2022

TITLE:

3/8" STACK, SNGL SOL, 2 POS,  
DTNT, PLT RTRN, H-TEMP, 120/60,  
DUST EXLDR

PART NO.:

EBSR3HLQ

REV.:

THE INFORMATION CONTAINED WITHIN THIS DOCUMENT IS PROPRIETARY TO AAA PRODUCTS AND MAY NOT BE DISCLOSED  
WITHOUT PRIOR WRITTEN CONSENT