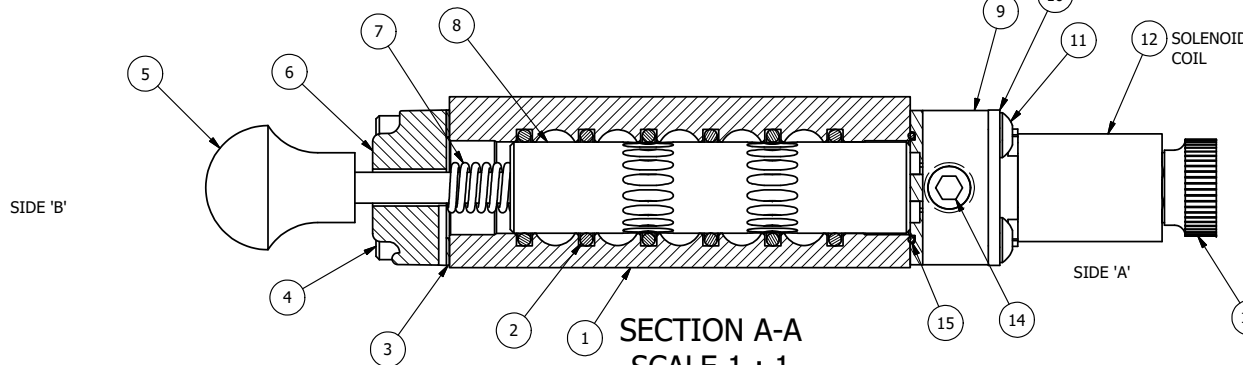


POSITION GASKET TO SEAL PILOT HOLE SIDE 'B' ONLY.

ALIGN PILOT AND SLOT IN ADAPTOR WITH GASKET IN BETWEEN SIDE 'A' ONLY FOR EXTERNAL PILOT OPERATION - ROTATE ADAPTOR 180 DEGREES. REMOVE 1/8" NPTF PLUG AND SUPPLY 50-150 PSI TO 1/8" NPTF PILOT PORT IN ADAPTOR.

AAA PRODUCTS INT'L  
ZESO3MOLOS  
XX  
WWW.AAAPRODUCTS.COM

MARK VALVE USING 1/8" LETTERS WHERE XX IS THE DATE CODE

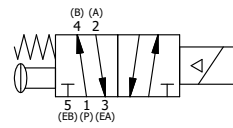


SECTION A-A  
SCALE 1 : 1  
VIEW FROM 3 PORT SIDE

| FLG | QTY | PART NO   | DESCRIPTION  |
|-----|-----|-----------|--|
| 15  | 1   | EMG3      | GASKET - END MOUNT SOLENOID, BUNA-N, 1/4" & 3/8" VALVES                      |
| 14  | 1   | V-19-SS   | PLUG, SOCKET PIPE 1/8"-27 NPT, 7/8 TAPER, PLAIN, FLUSH SEAL, STAINLESS STEEL |
| 13  | 1   | V-567W    | E SERIES SINTERED BRONZE MUFFLER, DUST EXCLUDER, V-613 LOCK WASHER           |
| 12  | 1   | V-569-1   | SYSTEM 8 COIL 120 50/60.NASS # 0561 38.1 00/4984.                            |
| 11  | 4   | V-584-SS  | SCREW, 10-24 X 1, BUTTON HEAD SOCKET CAP, 18-8 OR 303 SS                     |
| 10  | 1   | SEC3-7    | PLATE, RE-INFORCEMENT, SOLENOID, STAMPED, 304 STAINLESS                      |
| 9   | 1   | V-599-1   | SOL OPER, END MOUNT, LOCKING O'RIDE  |
| 8   | 1   | AY-S3-SIK | ASSEMBLY - SPOOL INDICATOR, THREADED, 1/4" & 3/8" VALVE                      |
| 7   | 1   | CS3       | SPRING - RETURN, (EXCEPT HO, KO & PO) 1/4" & 3/8" VALVES                     |
| 6   | 1   | SEC3-4    | END CAP, VENTED, INDICATOR PIN, STAINLESS STEEL, 1/4" & 3/8" VALVES          |
| 5   | 1   | V-570     | KNOB, BLACK (BRASS 1/4-20 INSERT), OS OPTION                                 |
| 4   | 4   | V-38-SS   | SCREW, 10-24 X 3/4, SOCKET HEAD CAP, 18-8 SS                                 |
| 3   | 1   | ECG3      | GASKET - END CAP, 1/4" & 3/8" VALVE  |
| 2   | 6   | V-39      | O-RING, VITON, STD BODY, 1/4" & 3/8" VALVES                                  |
| 1   | 1   | ZB3-1     | BODY - BRASS, UPPER PILOTS (BUTTON BLEEDER), 3/8" SIDE PORT VALVE            |

NOTES:

- 1) ALWAYS GIVE VALVE MODEL AND PART NUMBER WHEN ORDERING PARTS.
- 2) FOR DIFFERENT VOLTAGES OTHER THAN 120/60, REPLACE SOLENOID COIL WITH COIL LISTED IN TABLE BELOW.



| COIL VOLTAGES     |              |
|-------------------|--------------|
| PART NO           | REPLACE COIL |
| ZESO3MOLOS 12VDC  | V-569-2      |
| ZESO3MOLOS 24VDC  | V-569-3      |
| ZESO3MOLOS 240/60 | V-569-4      |

|  |                 |  |                         |   |
|--|-----------------|--|-------------------------|---|
| LIMITS ON DIMENSIONS UNLESS OTHERWISE SPECIFIED  |                 | 2-PL DECIMAL ± .01<br>3-PL DECIMAL ± .005<br>FRACTIONAL ± 1/64<br>ANGULAR ± 1/2° |                         | <p><b>AAA PRODUCTS INTERNATIONAL</b><br/>7114 Harry Hines Blvd<br/>Dallas, TX 75235</p> |
| DRAWN: RMckenna  | DATE: 3/25/2020 | CHECKED: KWaite  | DATE: 3/25/2020         |   |
| SCALE: 1 : 1   | SHEET: 1 OF 1   | RELEASED: HWomack  | DATE: 3/25/2020         |   |
| TITLE:<br>3/8" SIDE PORT, SNGL SOL, 2 POS, SPR RTRN, FLYING LEAD, 120/60, BR/SS LCKNG OVRD, EXCLDR, SPL OVRD |                 |  | PART NO.:<br>ZESO3MOLOS | REV.:   |

THE INFORMATION CONTAINED WITHIN THIS DOCUMENT IS PROPRIETARY TO AAA PRODUCTS AND MAY NOT BE DISCLOSED WITHOUT PRIOR WRITTEN CONSENT