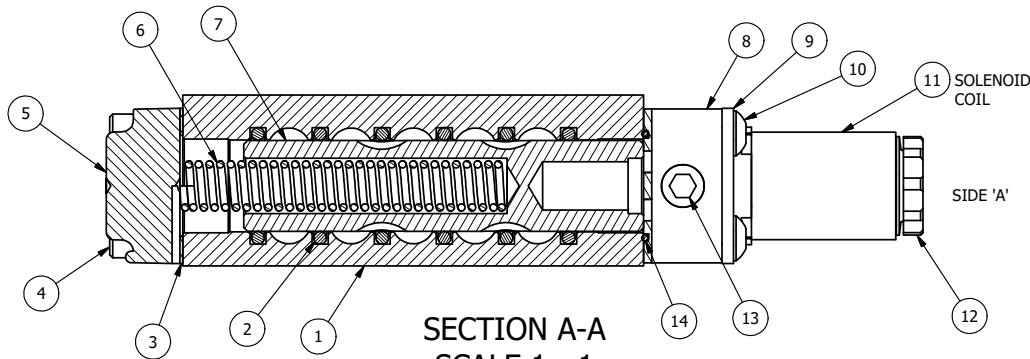
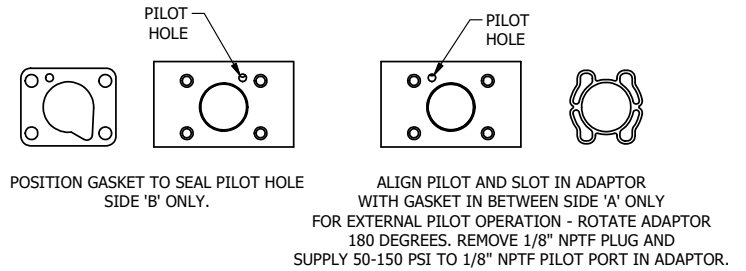


MARK VALVE USING 1/8" LETTERS WHERE XX IS THE DATE CODE

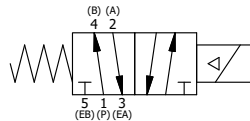


**SECTION A-A**  
**SCALE 1 : 1**  
VIEW FROM 3 PORT SIDE



| FLG | QTY | PART NO  | DESCRIPTION  |
|-----|-----|----------|--|
| 16  | 1   | V-607    | O-RING, VITON, 75 DURO, 14MM X 1MM, IP67 NUT SEAL                            |
| 15  | 2   | V-606    | O-RING, VITON, 75 DURO, 8MM X 1MM, IP67 STEM SEAL                            |
| 14  | 1   | EMG3     | GASKET - END MOUNT SOLENOID, BUNA-N, 1/4" & 3/8" VALVES                      |
| 13  | 1   | V-19-SS  | PLUG, SOCKET PIPE 1/8"-27 NPT, 7/8 TAPER, PLAIN, FLUSH SEAL, STAINLESS STEEL |
| 12  | 1   | V-556    | NUT, SOLENOID, TOP EXHAUST, KNURLED  |
| 11  | 1   | V-551-1  | THERMOPLASTIC ENCAPSULATED COIL 120V 50/60HZ, NASS P/N # 108-030-0455        |
| 10  | 4   | V-584-SS | SCREW, 10-24 X 1, BUTTON HEAD SOCKET CAP, 18-8 OR 303 SS                     |
| 9   | 1   | SEC3-7   | PLATE, RE-INFORCEMENT, SOLENOID, STAMPED, 304 STAINLESS                      |
| 8   | 1   | V-550-1  | SOL OPER, END MOUNT, NON-LOCKING O/RIDE                                      |
| 7   | 1   | S3       | SPOOL - STANDARD, 2 POS, CLSD CTR, 1/4" & 3/8" VALVE                         |
| 6   | 1   | CS3      | SPRING - RETURN, (EXCEPT HO, KO & PO) 1/4" & 3/8" VALVES                     |
| 5   | 1   | SEC3-3   | END CAP, VENTED, STAINLESS STEEL, 1/4" & 3/8" VALVES                         |
| 4   | 4   | V-38-SS  | SCREW, 10-24 X 3/4, SOCKET HEAD CAP, 18-8 SS                                 |
| 3   | 1   | ECG3     | GASKET - END CAP, 1/4" & 3/8" VALVE  |
| 2   | 6   | V-39     | O-RING, VITON, STD BODY, 1/4" & 3/8" VALVES                                  |
| 1   | 1   | ZB2-1    | BODY - BRASS, UPPER PILOTS (BUTTON BLEEDER), 1/4" SIDE PORT VALVE            |

- NOTES:  
 1) ALWAYS GIVE VALVE MODEL AND PART NUMBER WHEN ORDERING PARTS.  
 2) FOR DIFFERENT VOLTAGES OTHER THAN 120/60, REPLACE SOLENOID COIL WITH COIL LISTED IN TABLE BELOW.



| COIL VOLTAGES |              |
|---------------|--------------|
| PART NO       | REPLACE COIL |
| ZES02 240/60  | V-551-4      |
| ZES02 24VDC   | V-551-3      |
| ZES02 12VDC   | V-551-2      |

|  |  |   |                 |
|--|--|---|-----------------|
| LIMITS ON DIMENSIONS UNLESS OTHERWISE SPECIFIED  | 2-PL DECIMAL ± .01<br>3-PL DECIMAL ± .005<br>FRACTIONAL ± 1/64<br>ANGULAR ± 1/2° | <p><b>AAA PRODUCTS INTERNATIONAL</b><br/>7114 Harry Hines Blvd<br/>Dallas, TX 75235</p> |                 |
| DRAWN: RMcKenna  | DATE: 12/11/2014   |   | CHECKED: KWaite |
| SCALE: 1 : 1   | SHEET: 1 OF 1  | RELEASED: HWomack   | DATE: 6/1/2015  |
| TITLE:<br><b>1/4" SIDE PORT, SNGL SOL, 2 POS, SPRING RTRN, BRASS &amp; STAINLESS, 120/60</b> |  | PART NO.:   | REV.:           |
|  |  | ZES02   |                 |

THE INFORMATION CONTAINED WITHIN THIS DOCUMENT IS PROPRIETARY TO AAA PRODUCTS AND MAY NOT BE DISCLOSED WITHOUT PRIOR WRITTEN CONSENT