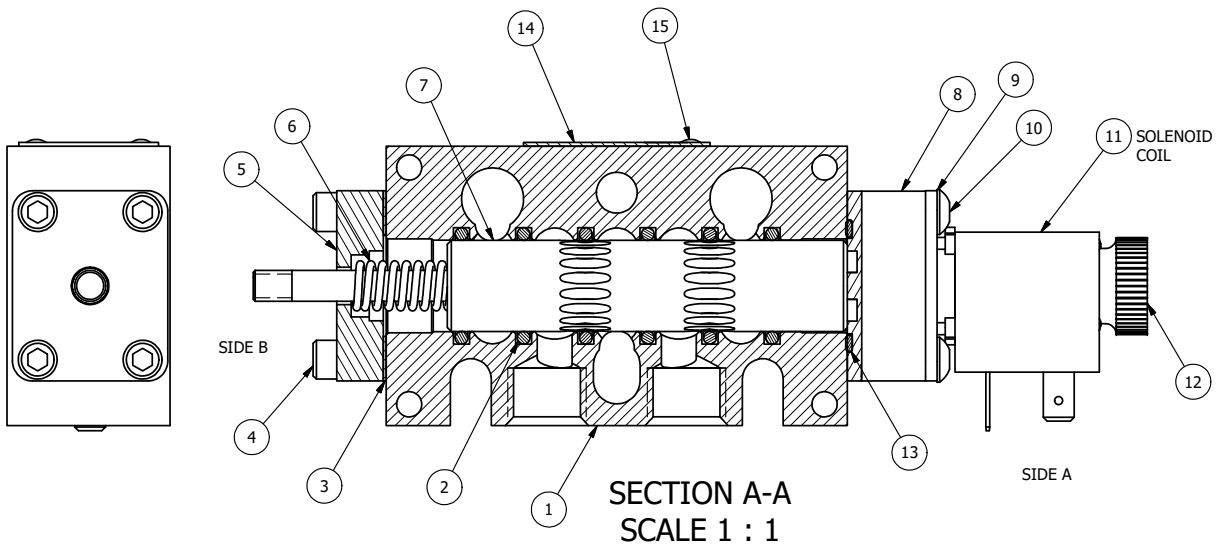


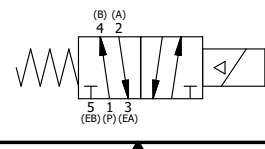
NOTES:  
 1) ALWAYS GIVE VALVE MODEL AND PART NUMBER WHEN ORDERING PARTS.  
 2) FOR DIFFERENT VOLTAGES OTHER THAN 120/60, REPLACE SOLENOID COIL WITH COIL LISTED IN TABLE BELOW.



|     |     |           |   |
|-----|-----|-----------|---|
| 16  | 3   | V-110     | O-RING, BUNA-N, 70 DURO, AN-114, (REF 5/8 X 13/16 X 3/32), 1/4" SLEEVE, 1/2" SUB, STACK |
| 15  | 2   | V-212     | SCREW, #2 X 3/16 DRIVE, TYPE U, OVAL HEAD, STAINLESS STEEL                              |
| 14  | 1   | AN-114    | NAMEPLATE, BLANK, FOR VALVES WITH SPRINGS OR DETENTS                                    |
| 13  | 1   | EMG3      | GASKET - END MOUNT SOLENOID, BUNA-N, 1/4" & 3/8" VALVES                                 |
| 12  | 1   | V-567W    | E SERIES SINTERED BRONZE MUFFLER, DUST EXCLUDER, V-613 LOCK WASHER                      |
| 11  | 1   | V-551-1   | THERMOPLASTIC ENCAPSULATED COIL 120V 50/60HZ, NASS P/N # 108-030-0455                   |
| 10  | 4   | V-584     | SCREW, 10-24 X 1, BUTTON HEAD SOCKET CAP WITH MICROSPHERE APPLIED TO THREADS.           |
| 9   | 1   | SEC3-7    | PLATE, RE-INFORCEMENT, SOLENOID, STAMPED, 304 STAINLESS                                 |
| 8   | 1   | V-550-1   | SOL OPER, END MOUNT, NON-LOCKING ORIDE  |
| 7   | 1   | AY-S3-SIK | ASSEMBLY - SPOOL INDICATOR, THREADED, 1/4" & 3/8" VALVE                                 |
| 6   | 1   | CS3       | SPRING - RETURN, (EXCEPT HO, KO & PO) 1/4" & 3/8" VALVES                                |
| 5   | 1   | PEC3-5    | END CAP, INDICATOR PIN, WIPER CAVITY, 6061-T6, 1/4" & 3/8" VALVE                        |
| 4   | 4   | V-38      | SCREW, 10-24 X 3/4, SOCKET HEAD CAP   |
| 3   | 1   | ECG3      | GASKET - END CAP, 1/4" & 3/8" VALVE   |
| 2   | 6   | V-39      | O-RING, VITON, STD BODY, 1/4" & 3/8" VALVES   |
| 1   | 1   | B3-10E    | FINISHED - SOLID BODY, UPPER PILOTS, 3/8" STACKING VALVE                                |
| FLG | QTY | PART NO   | DESCRIPTION   |

|   |                     |  |                 |
|---|---------------------|--|-----------------|
| LIMITS ON DIMENSIONS UNLESS OTHERWISE SPECIFIED   | 2-PL DECIMAL ± .01  | <b>AAA PRODUCTS INTERNATIONAL</b><br>7114 Harry Hines Blvd<br>Dallas, TX 75235 |                 |
|   | 3-PL DECIMAL ± .005 |  |                 |
|   | FRACTIONAL ± 1/64   |  |                 |
|   | ANGULAR ± 1/2°      |  |                 |
| DRAWN: RMckenna   | DATE: 5/24/2019     | CHECKED: KWaite  | DATE: 5/24/2019 |
| SCALE: 1 : 1  | SHEET: 1 OF 1       | RELEASED: HWomack  | DATE: 5/24/2019 |
| TITLE: 3/8" STACK, SNGL SOL, 2 POS, SPRING RTRN, 120/60, DUST EXLDR, THREADED INDICATOR PIN |                     | PART NO.: EBSO3LK  | REV.:           |

| COIL VOLTAGES  |              |
|----------------|--------------|
| PART NO        | REPLACE COIL |
| EBSO3LK 12VDC  | V-551-2      |
| EBSO3LK 24VDC  | V-551-3      |
| EBSO3LK 240/60 | V-551-4      |



THE INFORMATION CONTAINED WITHIN THIS DOCUMENT IS PROPRIETARY TO AAA PRODUCTS AND MAY NOT BE DISCLOSED WITHOUT PRIOR WRITTEN CONSENT