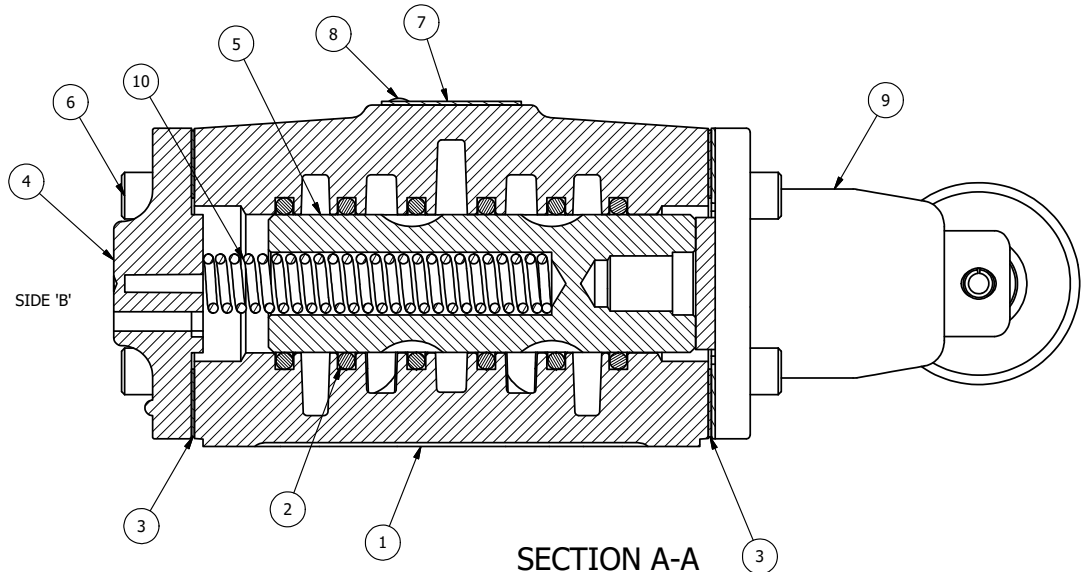
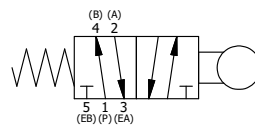


POSITION GASKET ON END OF VALVE SO GASKET COVERS PILOT HOLE, BOTH SIDES (SIDE 'A' SHOWN)

NOTES:
 1) ALWAYS GIVE VALVE MODEL AND PART NUMBER WHEN ORDERING PARTS.
 2) SEE AY-C353V ASSEMBLY PRINT FOR CAM OPERATOR PARTS DETAIL.



SECTION A-A
 SCALE 1
 VIEW FROM 3 PORT SIDE



FLG	QTY	PART NO	DESCRIPTION
10	1	CS4	SPRING - RETURN, 1/2" VALVES
9	1	AY-C353V	ASSY - CAM OPERATOR, WIPER, 1/2", 3/4" & 1" VALVES
8	2	V-212	SCREW, #2 X 3/16 DRIVE, TYPE U, OVAL HEAD, STAINLESS STEEL
7	1	AN-114	NAMEPLATE, BLANK, FOR VALVES WITH SPRINGS OR DETENTS
6	8	V-46	SCREW, 1/4-20 X 3/4, SOCKET HEAD CAP
5	1	S4	SPOOL - STANDARD, 2 POS, CLSD CTR, 1/2" VALVE
4	1	PEC48-3	END CAP, VENTED, 380 AL, 1/2", 3/4" & 1" VALVES
3	2	ECG48	GASKET - END CAP, 1/2", 3/4" & 1" VALVE
2	6	V-6	O-RING, BUNA-N, 70 DURO, AS-216, (REF 1-1/8 X 1-3/8 X 1/8), 1/2" VALVES, 1" SUBPLATE
1	1	B4-1	BODY, 1/2" SIDE PORT, UPPER PILOTS, ANODIZED

LIMITS ON DIMENSIONS UNLESS OTHERWISE SPECIFIED		2-PL DECIMAL ± .01 3-PL DECIMAL ± .005 FRACTIONAL ± 1/64 ANGULAR ± 1/2°		AAA PRODUCTS INTERNATIONAL 7114 Harry Hines Blvd Dallas, TX 75235
DRAWN: RMckenna	DATE: 12/15/2020	CHECKED: KWaite	DATE: 12/15/2020	
SCALE: 3/4	SHEET: 1 OF 1	RELEASED: HWomack	DATE: 12/15/2020	
TITLE: 1/2" SIDE PORT, CAM, 2 POS, SPRING RTRN, LG CAM W/WIPER			PART NO.: 841V	REV.:

THE INFORMATION CONTAINED WITHIN THIS DOCUMENT IS PROPRIETARY TO AAA PRODUCTS AND MAY NOT BE DISCLOSED WITHOUT PRIOR WRITTEN CONSENT

P:\Engineering\product\Valves\Assembly\Cam\Specs\DWG\841V.dwg