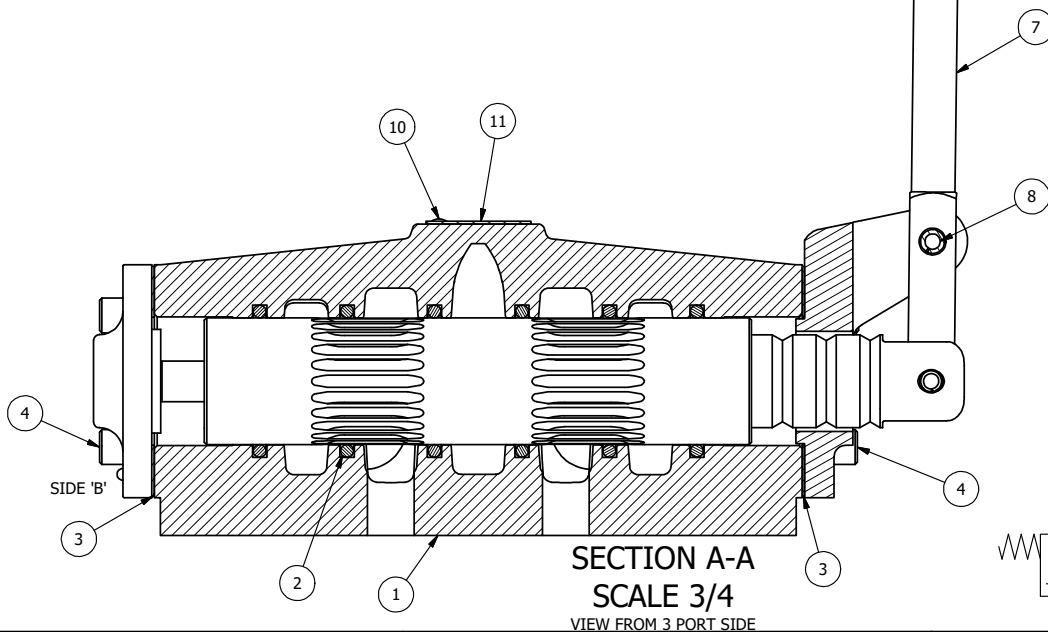
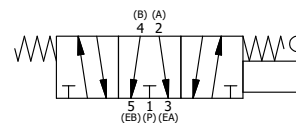


POSITION GASKET ON END OF VALVE SO GASKET COVERS PILOT HOLE BOTH SIDES (SIDE 'A' SHOWN)

NOTES:
1) ALWAYS GIVE VALVE MODEL AND PART NUMBER WHEN ORDERING PARTS.



SIDE 'A'



| FLG | QTY | PART NO | DESCRIPTION |
|-----|-----|-----------|---|
| 11 | 1 | AN-114 | NAME PLATE, BLANK, FOR VALVES WITH SPRINGS OR DETENTS. |
| 10 | 2 | V-212 | SCREW, 2 X 3/16, DRIVE, TYPE U, OVAL HEAD, 316 SS |
| 9 | 2 | V-552 | PLUG, 3/4" NPT FLUSH SEAL |
| 8 | 1 | V-70 | PIN, ROLL 1/4 X 1 1/8 FOR 3/4" & 1" HAND AND FOOT VALVES |
| 7 | 1 | HL8-9 | HAND LEVER ASSEMBLY, 3/4" & 1" VALVE |
| 6 | 1 | FE8 | END CAP, HAND & FOOT, STEEL, NICKEL PLATE, 3/4" & 1" VALVES |
| 5 | 1 | AY-HY8G | ASSY - SPR CTR, FLOAT CTR SPL, LEVER OR TREDAL, 3/4" & 1" VALVE |
| 4 | 8 | V-46 | SCREW, 1/4-20 X 3/4, SOCKET HEAD CAP |
| 3 | 2 | ECG48 | GASKET - END CAP, 1/2", 3/4" & 1" VALVE |
| 2 | 6 | V-30 | O-RING, BUNA-N, 70 DURO, AS-220, (REF 1-3/8 X 1-5/8 X 1/8), 3/4" & 1" VALVES |
| 1 | 1 | BP8-806VY | BODY, 1" SIDE PORT, PRTS 1, 3 & 5, 1/2 X 1-15/16 SLOTS, BTM PRTS 2 & 4, FOR 806VY VALVE |

| | | | | |
|---|-----------------|--|-----------------|--|
| LIMITS ON DIMENSIONS UNLESS OTHERWISE SPECIFIED | | 2-PL DECIMAL ± .01 3-PL DECIMAL ± .005 FRACTIONAL ± 1/64 ANGULAR ± 1/2° | | AAA PRODUCTS INTERNATIONAL 7114 Harry Hines Blvd Dallas, TX 75235 |
| DRAWN: RMckenna | DATE: 2/20/2018 | CHECKED: KWaitte | DATE: 2/20/2018 | |
| SCALE: 3/4 | SHEET: 1 OF 1 | RELEASED: HWomack | DATE: 2/20/2018 | |
| TITLE: 1" PORTS 1, 3 & 5, LEVER, 3 POS, SPR CTR, LEVER SHFT, FLOAT CTR SPL, 1/2x1-15/16 BTM SLOTS, PORTS 2 & 4 | | | PART NO.: | REV.: |
| | | | 814VY | |

THE INFORMATION CONTAINED WITHIN THIS DOCUMENT IS PROPRIETARY TO AAA PRODUCTS AND MAY NOT BE DISCLOSED WITHOUT PRIOR WRITTEN CONSENT

D:\Engineering\Inventor Files\Internal Drawings\Valves Assembly\Level Special\814VY.dwg