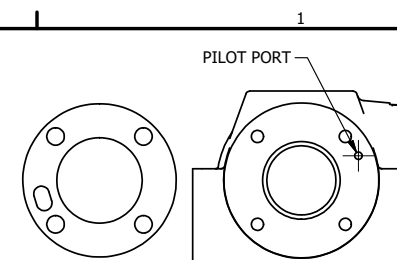
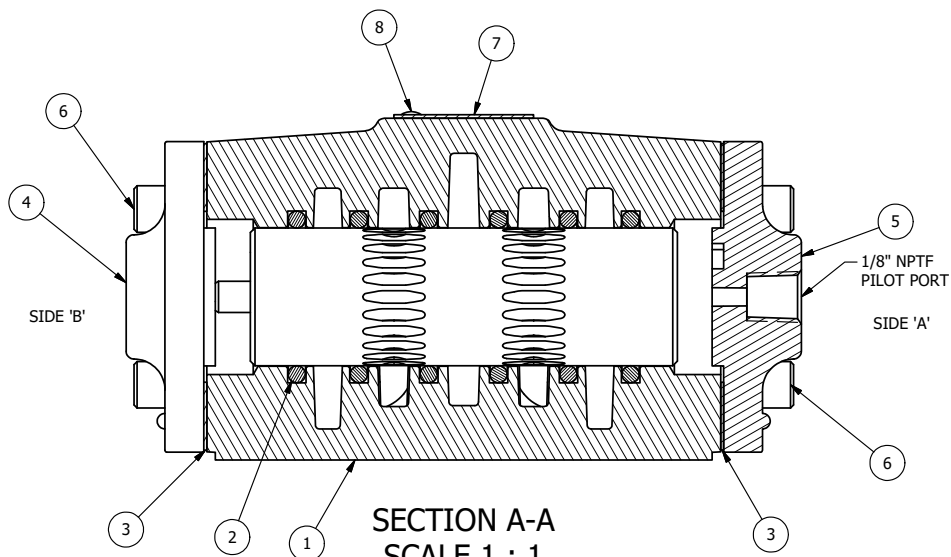


DOW-55 GREASE VITON O-RINGS 500 PSI TEST



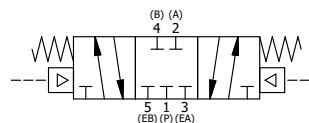
POSITION GASKET ON END OF VALVE SO
GASKET SEALS PILOTS
BOTH SIDE (SIDE 'B' SHOWN)

- NOTES:
 1) ALWAYS GIVE VALVE MODEL AND PART NUMBER WHEN ORDERING PARTS.
 2) USE DOW-55 GREASE ON VITON O-RINGS.
 3) ADDITIONAL TESTING FOR 500 PSI.
 4) MARK NAME TAG FOR 500 PSI.



SECTION A-A
SCALE 1 : 1

- NOTES:
 1) ALWAYS GIVE VALVE MODEL AND PART NUMBER WHEN ORDERING PARTS.



FLG	QTY	PART NO	DESCRIPTION
8	2	V-212	SCREW, 2 X 3/16, DRIVE, TYPE U, OVAL HEAD, 316 SS
7	1	AN-114	NAME PLATE, BLANK, FOR VALVES WITH SPRINGS OR DETENTS.
6	8	V-46	SCREW, 1/4-20 X 3/4, SOCKET HEAD CAP
5	1	PEC48	END CAP, PILOT, 380 AL, 1/2", 3/4" & 1" VALVES
4	1	AY-RY4	ASSY - SPR CTR, REGEN CTR SPL, REMOTE PILOT, 1/2" VALVE
3	2	ECG48	GASKET - END CAP, 1/2", 3/4" & 1" VALVE
2	6	V-87	O-RING, VITON, 75 DURO, AS-216, (REF 1-1/8 X 1-3/8 X 1/8), 1/2" VALVES, 1" SUBPLATE
1	1	B4-1	BODY, 1/2" SIDE PORT, UPPER PILOTS, ANODIZED

LIMITS ON DIMENSIONS UNLESS OTHERWISE SPECIFIED		2-PL DECIMAL ± .01 3-PL DECIMAL ± .005 FRACTIONAL ± 1/64 ANGULAR ± 1/2°		AAA PRODUCTS INTERNATIONAL 7114 Harry Hines Blvd Dallas, TX 75235
DRAWN: RMckenna	DATE: 12/15/2017	CHECKED: KWaite	DATE: 12/15/2017	
SCALE: 1 : 1	SHEET: 1 OF 1	RELEASED: HWomack	DATE: 12/15/2017	
TITLE: 1/2" SIDE PORT, DBL PILOT, 3 POS, SPR CTR, PILOT SHFT, CLSD CTR SPL, DOW-55, VITON O-RINGS, 500 PSI			PART NO.: 807VY	REV.: A

THE INFORMATION CONTAINED WITHIN THIS DOCUMENT IS PROPRIETARY TO AAA PRODUCTS AND MAY NOT BE DISCLOSED WITHOUT PRIOR WRITTEN CONSENT

D:\Engineering\Inventory Files\Internal Drawings\Valves Assembly\Pilot Special\807VY.dwg