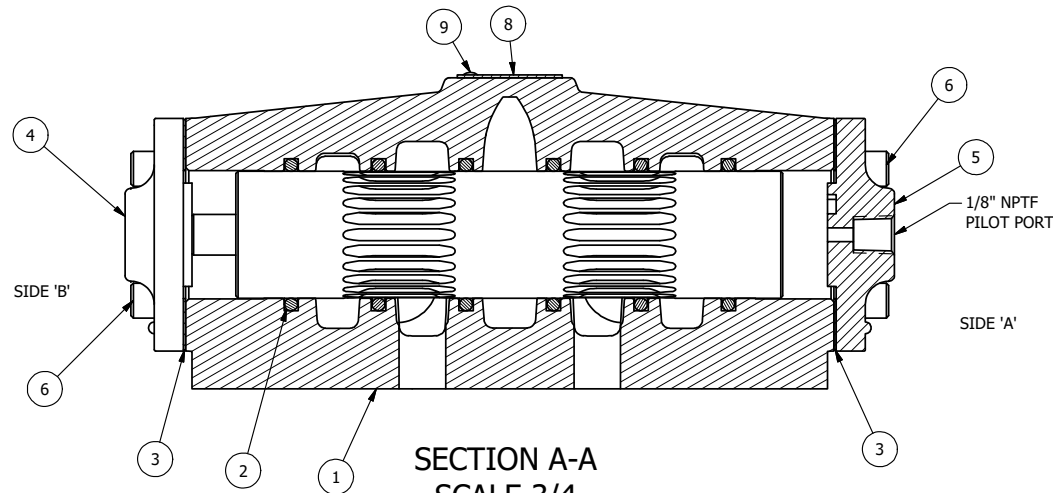


POSITION GASKET ON END OF VALVE SO GASKET COVERS PILOT HOLE, BOTH SIDES (SIDE 'A' SHOWN)

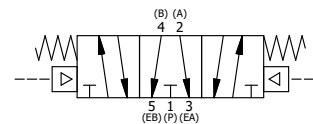
NOTES:

1) ALWAYS GIVE VALVE MODEL AND PART NUMBER WHEN ORDERING PARTS.

PLG	QTY	PART NO	DESCRIPTION
9	2	V-212	SCREW, 2 X 3/16, DRIVE, TYPE U, OVAL HEAD, 316 SS
8	1	AN-114	NAME PLATE, BLANK, FOR VALVES WITH SPRINGS OR DETENTS.
7	2	V-552	PLUG, 3/4" NPT FLUSH SEAL
6	8	V-46	SCREW, 1/4-20 X 3/4, SOCKET HEAD CAP
5	1	PEC48	END CAP, PILOT, 380 AL, 1/2", 3/4" & 1" VALVES
4	1	AY-RY8G	ASSY - SPR CTR, FLOAT CTR SPL, PILOT, 3/4" & 1" VALVE
3	2	ECG48	GASKET - END CAP, 1/2", 3/4" & 1" VALVE
2	6	V-30	O-RING, BUNA-N, 70 DURO, AS-220, (REF 1-3/8 X 1-5/8 X 1/8), 3/4" & 1" VALVES
1	1	BP8-806VY	BODY, 1" SIDE PORT, PRTS 1, 3 & 5, 1/2 X 1-15/16 SLOTS, BTM PRTS 2 & 4, FOR 806VY VALVE



SECTION A-A
SCALE 3/4
VIEW FROM 3 PORT SIDE



LIMITS ON DIMENSIONS UNLESS OTHERWISE SPECIFIED		2-PL DECIMAL ± .01 3-PL DECIMAL ± .005 FRACTIONAL ± 1/64 ANGULAR ± 1/2°		AAA PRODUCTS INTERNATIONAL 7114 Harry Hines Blvd Dallas, TX 75235
DRAWN: RMcKenna	DATE: 12/11/2017	CHECKED: KWait	DATE: 12/11/2017	
SCALE: 1 : 1	SHEET: 1 OF 1	RELEASED: HWomack	DATE: 12/11/2017	
TITLE: 1" PORTS 1, 3 & 5, PILOT, 3 POS, SPR CTR, PILOT SHFT, FLOAT CTR SPL, 1/2x1-15/16 BTM SLOTS, PORTS 2 & 4			PART NO.: 806VY	REV.:

THE INFORMATION CONTAINED WITHIN THIS DOCUMENT IS PROPRIETARY TO AAA PRODUCTS AND MAY NOT BE DISCLOSED WITHOUT PRIOR WRITTEN CONSENT

D:\Engineering\Inventor Files\Internal Drawings\806VY\806VY.dwg