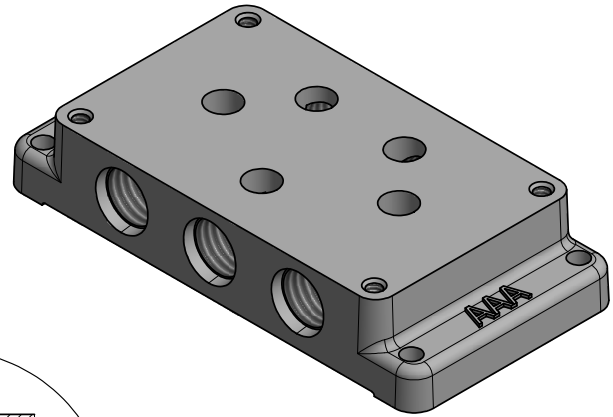


SECTION A-A
SCALE 2 : 1

NOTES:
1) MILL Ø.516 (Ø33/64), DEPTH .560. IF A DRILL IS USED, TIP MUST BE 160°-180°. TAP 9/16-18, MINIMUM DEPTH 1/2. USE MODIFIED Ø5/8 C'BORE WITH Ø1/2 BOSS, WITH 8.36° TAPER EACH SIDE, TO A DEPTH OF 0.105.



1	SP2-3N	SUBPLATE - 1/4" SIDE PORT, NO PILOT, 3/8" SUBPLATE VALVE
FL	QNTY	PART NO. DESCRIPTION

LIMITS ON DIMENSIONS
UNLESS
OTHERWISE SPECIFIED

2-PL DECIMAL ± .01
3-PL DECIMAL ± .005
FRACTIONAL ± 1/64
ANGULAR ± 1/2°



DRAWN: RMcKenna	DATE: 7/28/2014	CHECKED: KWaite	DATE: 7/28/2014
SCALE: None	SHEET: 1 OF 1	RELEASED: HWomack	DATE: 7/28/2014
TITLE: SUBPLATE, 3/8" SAE (9/16-18), SIDE PORTS, WITHOUT PILOTS		PART NO.: 745V	REV.:

THE INFORMATION CONTAINED WITHIN THIS DOCUMENT IS PROPRIETARY TO AAA PRODUCTS AND MAY NOT BE DISCLOSED WITHOUT PRIOR WRITTEN CONSENT

P:\Engineering\Inventory Files\Internal Drawings\Subplates\745V.dwg