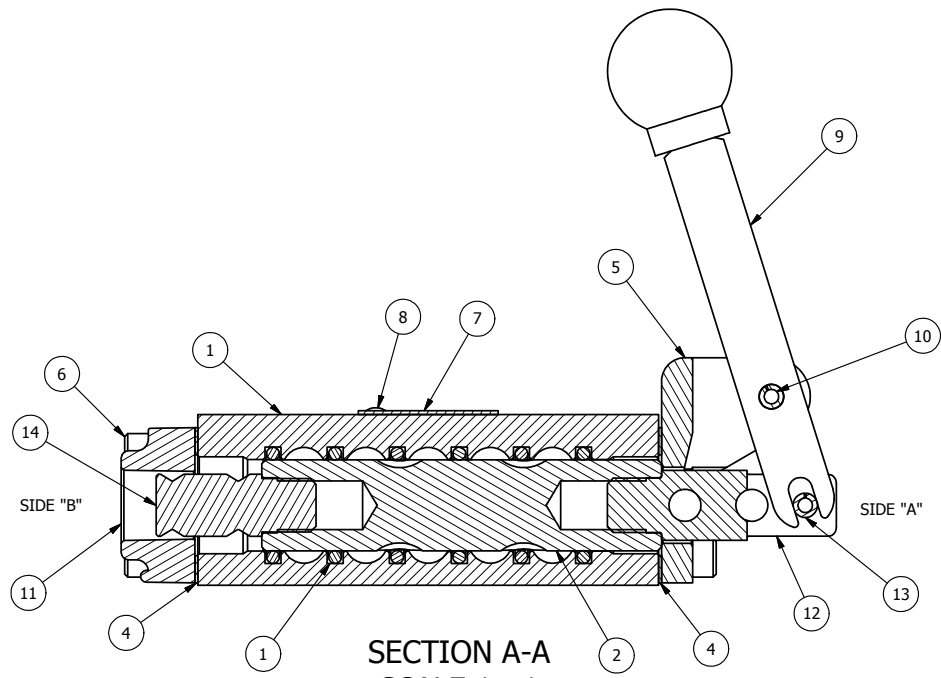
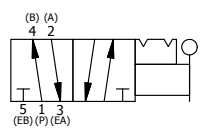


ALIGN GASKET SO MOUNTING HOLES ALIGN, BOTH ENDS

NOTES:
1) ALWAYS GIVE VALVE MODEL, AND PART NUMBER WHEN ORDERING PARTS.



SECTION A-A
SCALE 1 : 1
VIEW FROM 3 PORT SIDE



17	1	V-21	SCREW, 1/4-20 X 3/16 SOCKET SET (CUP POINT)
16	1	DS3	SPRING - DETENT, 1/4" & 3/8" VALVE
15	1	V-14	BALL, CHROME STEEL 3/16 DIA. FOR DETENT
14	1	PBS3-13	STUD - POS. A & C. DETENT, 1/4" & 3/8" VALVE
13	1	V-48	PIN, ROLL 3/16 X 9/16 ZINC PLATED STEEL FOR 1/4 HAND & FOOT CLEVIS
12	1	HC3-2LO	CLEVIS - POS. A & C LOCKOUT, 1/4" & 3/8" VALVE
11	1	PEC3-3	END CAP, 1/4 & 3/8" FOR K OPER WITH DETENT --FINISHED--
10	1	V-7	PIN, ROLL 3/16 X 11/16 FOR 1/4 THRU 1/2" HAND, FT. & CAM V
9	1	HL3-24	HAND LEVER WITH KNOB, 1/4" & 3/8" VALVE
8	2	V-212	SCREW, #2 X 3/16 DRIVE, TYPE U, OVAL HEAD, 316 STAINLESS STEEL
7	1	AN-114	NAME PLATE, BLANK, FOR VALVES WITH SPRINGS OR DETENTS.
6	8	V-38	SCREW, 10-24 X 3/4 SHCS, FOR 3/8" CAST END CAP
5	1	HE3-1LO	END CAP, 1/4 & 3/8" FOR HE3-1LO
4	2	ECG3	GASKET - END CAP, 1/4" & 3/8" VALVE
3	6	V-628	O-RING, BUNA 70 W/ SLURRY FINISH .729 X .103 . SPEC SEALS # N100-70/F5215.
2	1	S3R	SPOOL 1/4" VALVE - FINISHED - 2 POSITION HARD ANODIZED
1	1	B3-2E	BODY - SOLID, PLAIN, NO PILOTS, ANODIZED, 3/8" SIDE PORT VALVE
FLG	QTY	PART NO	DESCRIPTION

LIMITS ON DIMENSIONS UNLESS OTHERWISE SPECIFIED		2- PL DECIMAL ± .01 3- PL DECIMAL ± .005 FRACTIONAL ± 1/64 ANGULAR ± 1/2°		AAA PRODUCTS INTERNATIONAL 7114 Harry Hines Blvd Dallas, TX 75235
DRAWN: RMckenna	DATE: 7/15/2014	CHECKED: KWaite	DATE: 7/15/2014	
SCALE: 1 : 1	SHEET: 1 OF 1	RELEASED: HWomack	DATE: 7/15/2014	
TITLE: 3/8" SIDE PORT, LEVER, 2 POS, DETENT, LOCKOUT POS. A & C, BUNA O-RINGS			PART NO.: 742V	REV.:

THE INFORMATION CONTAINED WITHIN THIS DOCUMENT IS PROPRIETARY TO AAA PRODUCTS AND MAY NOT BE DISCLOSED WITHOUT PRIOR WRITTEN CONSENT

D:\Engineering\Inventory Files\Internal Drawings\Valves Assembly\Levers\742V.dwg