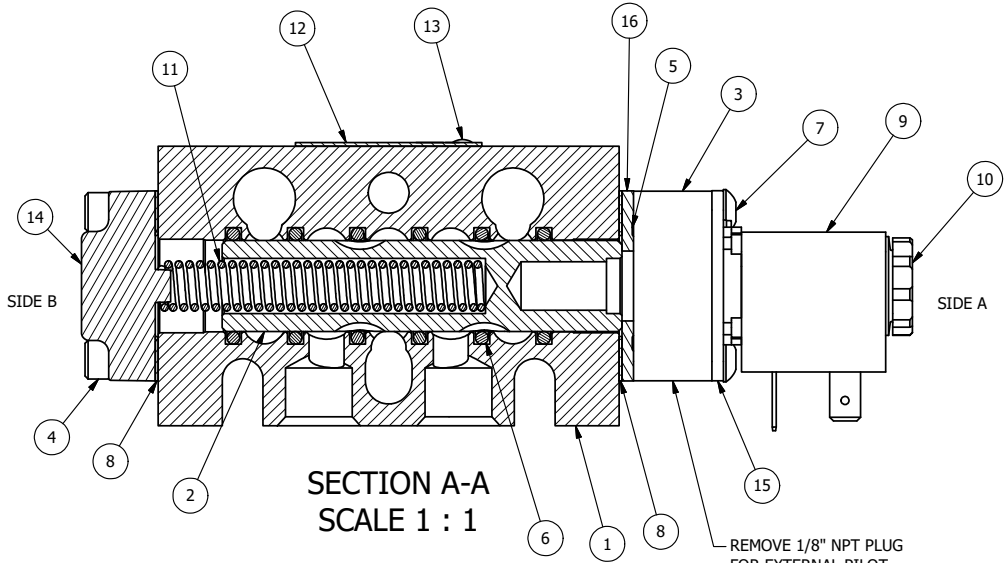
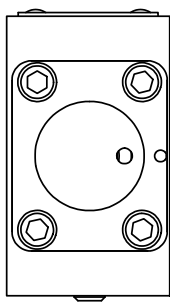


POSITION GASKET TO SEAL PILOT HOLE ON SIDE 'A' AND SIDE 'B' (SIDE 'B' SHOWN)

NOTES:  
1) ALWAYS GIVE VALVE MODEL AND PART NUMBER WHEN ORDERING PARTS.



REMOVE 1/8" NPT PLUG FOR EXTERNAL PILOT MAKE SURE THREADS ARE CLEAR OF SEALANT.

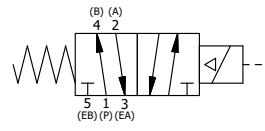
17	3	V-110	O-RING, BUNA-N, 70 DURO, AS-114, (REF 5/8 X 13/16 X 3/32), 1/4" SLEEVE, 1/2" SUB, STACK
16	1	SEC3-5	END CAP, STUD, 304 STAINLESS, 1/4" & 3/8" VALVE
15	1	SEC3-7	PLATE, RE-INFORCEMENT, SOLENOID, STAMPED, 304 STAINLESS
14	1	SEC3-A	END CAP, VENTED, SPRING BOSS, 380 AL, 1/4" & 3/8" VALVE
13	2	V-212	SCREW, #2 X 3/16 DRIVE, TYPE U, OVAL HEAD, STAINLESS STEEL
12	1	AN-114	NAMEPLATE, BLANK, FOR VALVES WITH SPRINGS OR DETENTS
11	1	CS3	SPRING - RETURN, (EXCEPT HO, KO & PO) 1/4" & 3/8" VALVES
10	1	V-556	NUT, SOLENOID, TOP EXHAUST, KNURLED
9	1	V-551-3	THERMOPLASTIC ENCAPSULATED COIL, 24V DC, 48 V 50/60 HZ., P/N 108-030-0454
8	2	ECG3	GASKET - END CAP, 1/4" & 3/8" VALVE
7	4	V-610	SCREW, 10-24 X 1-1/4, BUTTON HEAD SOCKET CAP
6	6	V-39	O-RING, VITON, STD BODY, 1/4" & 3/8" VALVES
5	1	EMG3	GASKET - END MOUNT SOLENOID, BUNA-N, 1/4" & 3/8" VALVES
4	4	V-38	SCREW, 10-24 X 3/4, SOCKET HEAD CAP
3	1	V-550-1	SOL OPER, END MOUNT, NON-LOCKING O'RIDE
2	1	S3	SPOOL - STANDARD, 2 POS, CLSD CTR, 1/4" & 3/8" VALVE
1	1	B3-10E	FINISHED - SOLID BODY, UPPER PILOTS, 3/8" STACKING VALVE
FLG	QTY	PART NO	DESCRIPTION

LIMITS ON DIMENSIONS UNLESS OTHERWISE SPECIFIED  
2-PL DECIMAL ± .01  
3-PL DECIMAL ± .005  
FRACTIONAL ± 1/64  
ANGULAR ± 1/2°



DRAWN: RMckenna DATE: 12/10/2012 CHECKED: KWaite DATE: 9/22/2013  
SCALE: None SHEET: 1 OF 1 RELEASED: HWomack DATE: 9/22/2013

TITLE: 3/8" STACK, SNGL SOL, 2 POS, SPRING RTRN, EXTR PILOT, 24VDC, WITH EPOK	PART NO.: 691V	REV.: A
--	-------------------	------------



A	12/5/2023	CHND V-610 SCRW FRM 1-1/8 TO 1-1/4. NO SPECIAL MACHINING.
NO.	DATE	REVISION

THE INFORMATION CONTAINED WITHIN THIS DOCUMENT IS PROPRIETARY TO AAA PRODUCTS AND MAY NOT BE DISCLOSED WITHOUT PRIOR WRITTEN CONSENT

P:\Engineering\product\Valves\Assembly\Standards\Special\DWG\691V.dwg