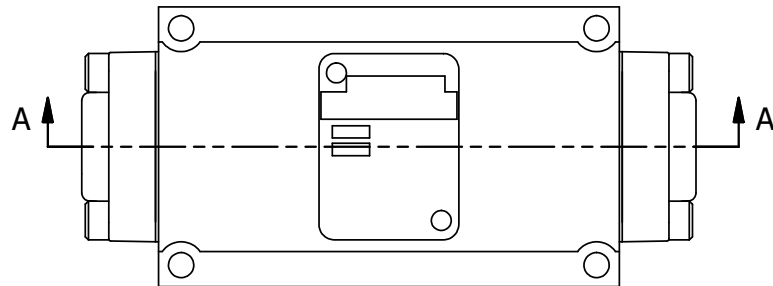
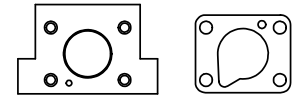


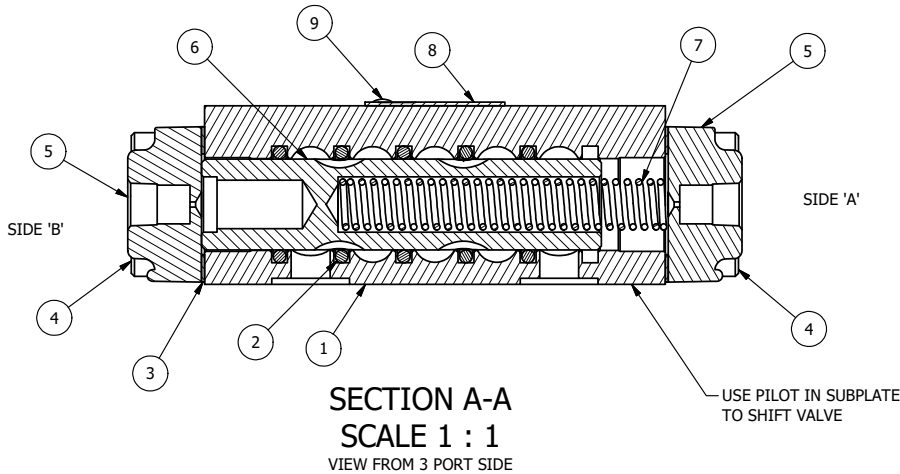
4 | 3 | 2 | 1



**DOW-55 GREASE
TUFRAM BODY
500 PSI**



POSITION GASKET ON END OF VALVE SO CUT OUT IN GASKET ALIGNS WITH LOWER PILOT BOTH ENDS (SIDE 'A' SHOWN)

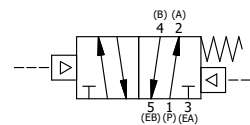


NOTES:

- 1) ALWAYS GIVE VALVE MODEL AND PART NUMBER WHEN ORDERING PARTS.
- 2) USE DOW-55 GREASE ON O-RINGS, SPRING & SPOOL.
- 3) TUFRAM, STAINLESS END CAPS AND STAINLESS HARDWARE.
- 4) TEST AND MARK FOR 500 PSI WORKING, 350 PSI PILOT.

FLG	QTY	PART NO	DESCRIPTION
10	1	SPK-3-SS	KIT - 3/8" SUBPLATE MOUNTING WITH STAINLESS SCREWS
9	2	V-212	SCREW, #2 X 3/16 DRIVE, TYPE U, OVAL HEAD, STAINLESS STEEL
8	1	AN-106	NAMEPLATE, BLANK, STAINLESS STEEL
7	1	CS3-2	SPRING - RETURN, (HO & KO) 1/4" & 3/8" VALVES
6	1	S3	SPOOL - STANDARD, 2 POS, CLSD CTR, 1/4" & 3/8" VALVE
5	2	PEC3-11	END CAP, PILOT, STAINLESS STEEL, 1/4" & 3/8" VALVE
4	8	V-38-SS	SCREW, 10-24 X 3/4, SOCKET HEAD CAP, 18-8 SS
3	2	ECG3	GASKET - END CAP, 1/4" & 3/8" VALVE
2	6	V-39	O-RING, VITON, STD BODY, 1/4" & 3/8" VALVES
1	1	BP3-3E-TC	BODY - SOLID, LOWER PILOT, TUFRAM, 3/8" SUBPLATE VALVE

LIMITS ON DIMENSIONS UNLESS OTHERWISE SPECIFIED		2-PL DECIMAL ± .01 3-PL DECIMAL ± .005 FRACTIONAL ± 1/64 ANGULAR ± 1/2°		<p>AAA PRODUCTS INTERNATIONAL 7114 Harry Hines Blvd Dallas, TX 75235</p>
DRAWN: RMckenna	DATE: 1/31/2013	CHECKED: KWaite	DATE: 2/4/2013	
SCALE: 1 : 1	SHEET: 1 OF 1	RELEASED: HWomack	DATE: 2/4/2013	
TITLE: 3/8" SUBPLATE, DBL PILOT, 2 POS, SPR RTRN, DOW 55, TUFRAM, REVERSE BUILD			PART NO.: 683V	REV.:



4 | 3 | 2

P:\Engineering\product\Valves\Assemblies\Pilot\Specs\DWG 683V.dwg