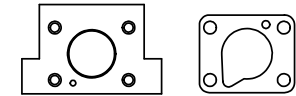
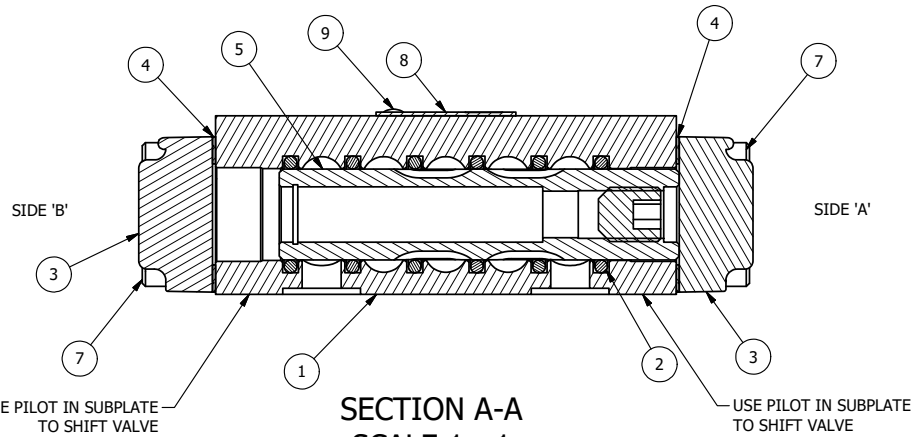


**DOW-55 GREASE
TUFRAM BODY
500 PSI**



POSITION GASKET ON END OF VALVE SO CUT OUT IN GASKET ALIGNS WITH LOWER PILOT BOTH ENDS (SIDE 'A' SHOWN)

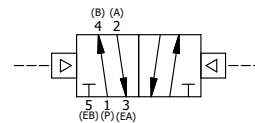
- NOTES:**
- 1) ALWAYS GIVE VALVE MODEL AND PART NUMBER WHEN ORDERING PARTS.
 - 2) USE DOW-55 GREASE ON O-RINGS, SPRING & SPOOL.
 - 3) TUFRAM, E-NICKEL AND STAINLESS HARDWARE.
 - 4) BUILD AND TEST USING LOWER PILOTS ONLY.
 - 5) TEST AND MARK FOR 500 PSI WORKING, 350 PSI PILOT.



**SECTION A-A
SCALE 1 : 1
VIEW FROM 3 PORT SIDE**

FLG	QTY	PART NO	DESCRIPTION
10	1	SPK-3-SS	KIT - 3/8" SUBPLATE MOUNTING WITH STAINLESS SCREWS
9	2	V-212	SCREW, #2 X 3/16 DRIVE, TYPE U, OVAL HEAD, STAINLESS STEEL
8	1	AN-106	NAMEPLATE, BLANK, STAINLESS STEEL
7	8	V-38-SS	SCREW, 10-24 X 3/4, SOCKET HEAD CAP, 18-8 SS
6	1	V-20-SS	SCREW, 7/16-20 X 1/2, SOCKET SET, CUP POINT, 18-8 SS OR EQUIVALENT
5	1	SSH3D	SPOOL - 'D', 3 POS, REGEN CTR, 1/4" & 3/8" VALVE
4	2	ECG3	GASKET - END CAP, 1/4" & 3/8" VALVE
3	2	SEC3-1-EN	END CAP, NON-VENTED, 380 AL, E-NICKEL PLATED, 1/4" & 3/8" VALVE
2	6	V-39	O-RING, VITON, STD BODY, 1/4" & 3/8" VALVES
1	1	BP3-3E-TC	BODY - SOLID, LOWER PILOT, TUFRAM, 3/8" SUBPLATE VALVE

LIMITS ON DIMENSIONS UNLESS OTHERWISE SPECIFIED		2-PL DECIMAL ± .01 3-PL DECIMAL ± .005 FRACTIONAL ± 1/64 ANGULAR ± 1/2°		AAA PRODUCTS INTERNATIONAL 7114 Harry Hines Blvd Dallas, TX 75235
DRAWN: RMckenna	DATE: 1/31/2013	CHECKED: KWaite	DATE: 2/4/2013	
SCALE: 1 : 1	SHEET: 1 OF 1	RELEASED: HWomack	DATE: 2/4/2013	
TITLE: 3/8" SUBPLATE, DBL PILOT, 2 POS, FRICTION POS, DOW 55, TUFRAM, REGEN CTR SPL			PART NO.: 682V	REV.: B



NO.	DATE	REVISION
B	1/7/2020	CHGD SPOOL FROM S3RD TO SSH3D. NEVER MADE A S3RD SPOOL. ADDED V-20-SS PLUG.
A	3/12/2013	REPLACED S3R CLOSED CENTER SPOOL WITH S3RD REGENERATIVE SPOOL.

THE INFORMATION CONTAINED WITHIN THIS DOCUMENT IS PROPRIETARY TO AAA PRODUCTS AND MAY NOT BE DISCLOSED WITHOUT PRIOR WRITTEN CONSENT