

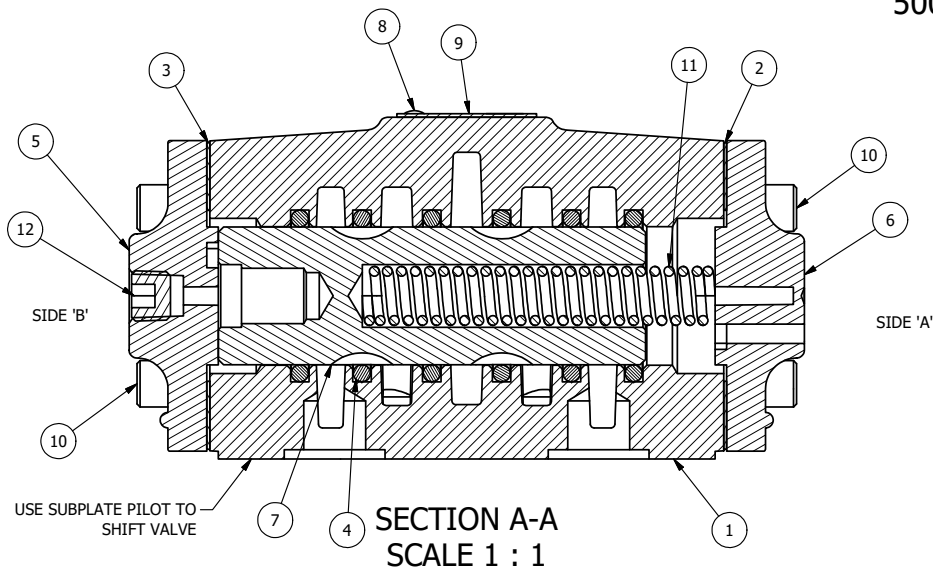
POSITION GASKET ON END OF VALVE SO CUT OUT IN GASKET ALIGNS WITH LOWER PILOT SIDE 'B' ONLY

POSITION GASKET ON END OF VALVE SO GASKET COVERS ALL PILOTS SIDE 'A' ONLY

**DOW-55 GREASE
VITON O-RINGS
TUFRAM BODY
500 PSI**

NOTES:

- 1) ALWAYS GIVE VALVE MODEL AND PART NUMBER WHEN ORDERING PARTS.
- 2) USE DOW-55 GREASE ON O-RINGS, SPRING & SPOOL.
- 3) TUFRAM, E-NICKEL AND STAINLESS HARDWARE.
- 4) BUILD AND TEST USING LOWER PILOTS ONLY.
- 5) TEST AND MARK FOR 500 PSI USE, 140 PSI PILOT.



**SECTION A-A
SCALE 1 : 1**

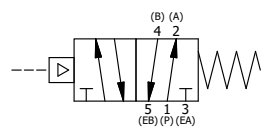
FLG	QTY	PART NO	DESCRIPTION
13	1	SPK-4-SS	KIT - SUBPLATE MOUNT, STAINLESS SCREWS, 1/2" SUBPLATE VALVES
12	1	V-19-SS	PLUG, SOCKET PIPE 1/8"-27 NPT, 7/8 TAPER, PLAIN, FLUSH SEAL, STAINLESS STEEL
11	1	CS4	SPRING - RETURN, 1/2" VALVES
10	8	V-46-SS	SCREW, 1/4-20 X 3/4, SOCKET HEAD CAP, 18-8 SS
9	1	AN-106	NAMEPLATE, BLANK, STAINLESS STEEL
8	2	V-212	SCREW, #2 X 3/16 DRIVE, TYPE U, OVAL HEAD, STAINLESS STEEL
7	1	S4	SPOOL - STANDARD, 2 POS, CLSD CTR, 1/2" VALVE
6	1	PEC48-3-EN	END CAP, VENTED, 380 AL, E-NICKEL PLATED, 1/2", 3/4" & 1" VALVES
5	1	PEC48-EN	ENDCAP, ELECTROLESS NICKEL PLATED 1/2 & 3/4 & 1 FOR R OPER
4	6	V-87	O-RING, VITON, 75 DURO, AS-216, (REF 1-1/8 X 1-3/8 X 1/8), 1/2" VALVES, 1" SUBPLATE
3	1	ECG48-1	GASKET - END CAP, LOWER PILOT, 1/2", 3/4" & 1" VALVE
2	1	ECG48	GASKET - END CAP, 1/2", 3/4" & 1" VALVE
1	1	BP4-3-TC	BODY, 1/2" SUBPLATE, LOWER PILOTS, TUFRAM COATED

LIMITS ON DIMENSIONS
UNLESS OTHERWISE SPECIFIED
2-PL DECIMAL ± .01
3-PL DECIMAL ± .005
FRACTIONAL ± 1/64
ANGULAR ± 1/2°



DRAWN: RMckenna DATE: 1/3/2013 CHECKED: KWaite DATE: 5/27/2015
SCALE: 1 : 1 SHEET: 1 OF 1 RELEASED: HWomack DATE: 5/27/2015

TITLE: 1/2" SUBPLATE, SNGL PILOT, 2 POS, SPRING RTRN, DOW 55, 500 PSI, TUFRAM & EN, VITON, RVRS BUILD	PART NO.: 680V	REV.: A
---	--------------------------	-------------------



NO.	DATE	REVISION
A	3/1/2013	REVERSED VALVE (WAS RO4PPW-3)

THE INFORMATION CONTAINED WITHIN THIS DOCUMENT IS PROPRIETARY TO AAA PRODUCTS AND MAY NOT BE DISCLOSED WITHOUT PRIOR WRITTEN CONSENT