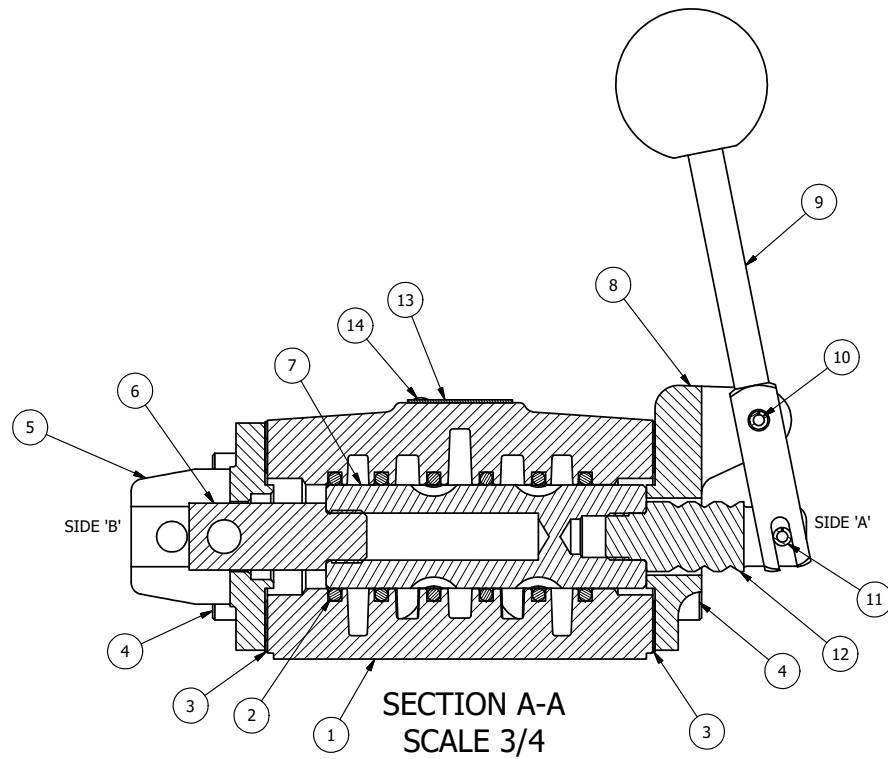


POSITION GASKET ON END OF VALVE SO GASKET COVERS PILOT HOLE BOTH SIDES (SIDE 'A' SHOWN)

NOTES:  
1) ALWAYS GIVE VALVE MODEL AND PART NUMBER WHEN ORDERING PARTS.



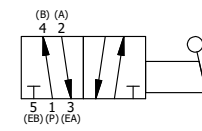
SECTION A-A  
SCALE 3/4

FLG	QTY	PART NO	DESCRIPTION
14	2	V-212	SCREW, #2 X 3/16 DRIVE, TYPE U, OVAL HEAD, 316 STAINLESS STEEL
13	1	AN-115	BLANK NAMEPLATE FOR HE,KE,KD,RR,D,CR,PP,SR,SS VALVES.
12	1	SC4-3	CLEVIS - 3 POS. DETENT, 1/2" VALVE
11	1	V-7	PIN, ROLL 3/16 X 11/16 FOR 1/4 THRU 1/2" HAND, FT. & CAM V
10	1	V-10	PIN, ROLL 3/16 X 7/8 FOR 1/2" HAND AND FOOT VALVE
9	1	HL4-9	HAND LEVER ASSEMBLY, 1/2" VALVE
8	1	FE4-1	END CAP - HAND & FOOT, 380 AL, 1/2" VALVE
7	1	S4-LO	SPOOL - REAR LOCKOUT, 1/2" VALVE
6	1	LOS4-2	STUD - REAR LOCKOUT, POSITION A & C, 1/2" VALVE
5	1	CEC4-1LO	ENDCAP - LOCK OUT, 6061-T6 AL, 1/2" VALVE
4	8	V-46	SCREW, 1/4-20 X 3/4 SHCS, HOLDS E.C TO 1/2-1" VALVES
3	2	ECG48	GASKET - END CAP, 1/2", 3/4" & 1" VALVE
2	6	V-6	O-RING, 1 1/8 X 1 3/8 X 1/8, BUNA-N, N100/70, 70D, ASS68A-216, 1/2" VALVES
1	1	B4-1	BODY, 1/2" SIDE PORT, UPPER PILOTS, ANODIZED

LIMITS ON DIMENSIONS UNLESS OTHERWISE SPECIFIED  
 2-PL DECIMAL ± .01  
 3-PL DECIMAL ± .005  
 FRACTIONAL ± 1/64  
 ANGULAR ± 1/2°



DRAWN: RMcKenna	DATE: 8/1/2006	CHECKED: KWaitte	DATE: 5/29/2015
SCALE: 3/4	SHEET: 1 OF 1	RELEASED: HWomack	DATE: 5/29/2015
TITLE: 1/2" SIDE PORT, LEVER, 2 POS, FRICTION POS, LEVER RTRN, LOCKOUT A & C		PART NO.: 672V	REV.:



THE INFORMATION CONTAINED WITHIN THIS DOCUMENT IS PROPRIETARY TO AAA PRODUCTS AND MAY NOT BE DISCLOSED WITHOUT PRIOR WRITTEN CONSENT

P:\Engineering\Inventory Files\Internal Drawings\Valves Assembly\Lever Special 16 2V.dwg