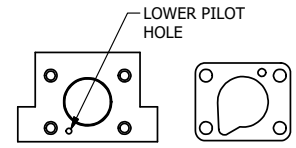
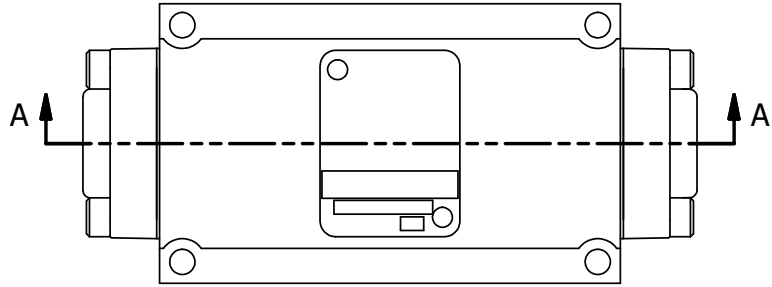
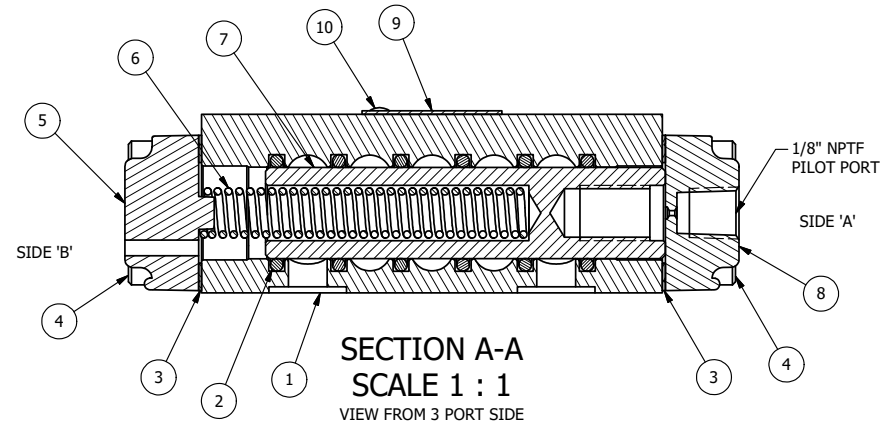


4 | 3 | 2 | 1



LOWER PILOT HOLE
 POSITION GASKET TO OPEN LOWER PILOT TO VALVE BOTH SIDES (SIDE 'A' SHOWN)

DOW 55 GREASE URETHANE O-RINGS

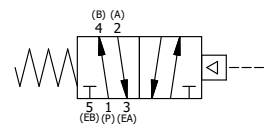


SECTION A-A
SCALE 1 : 1
 VIEW FROM 3 PORT SIDE

- NOTES:
 1) ALWAYS GIVE VALVE MODEL AND PART NUMBER WHEN ORDERING PARTS.
 2) USE DOW 55 GREASE TO LUBRICATE VALVE.
 3) USE URETHANE O-RINGS.
 4) MARK TAG FOR 500 PSI MAX. AND 250 PSI MAX. PILOT.
 5) STANDARD RO2 TESTS AT 60 AND 120 PSI.
 6) TEST SHIFT WITH 500 PSI IN PORT 1, PORTS 2 & 4 PLUGGED, PILOT SHIFT WITH 80 PSI.

FLG	QTY	PART NO	DESCRIPTION
11	1	SPK-3	KIT - SUBPLATE MOUNTING, 3/8" SUBPLATE VALVES
10	2	V-212	SCREW, #2 X 3/16 DRIVE, TYPE U, OVAL HEAD, STAINLESS STEEL
9	1	AN-114	NAMEPLATE, BLANK, FOR VALVES WITH SPRINGS OR DETENTS
8	1	PEC3	END CAP, PILOT, 380 AL, 1/4" & 3/8" VALVE
7	1	S3	SPOOL - STANDARD, 2 POS, CLSD CTR, 1/4" & 3/8" VALVE
6	1	CS3	SPRING - RETURN, (EXCEPT HO, KO & PO) 1/4" & 3/8" VALVES
5	1	SEC3-A	END CAP, VENTED, SPRING BOSS, 380 AL, 1/4" & 3/8" VALVE
4	8	V-38-SS	SCREW, 10-24 X 3/4, SOCKET HEAD CAP, 18-8 SS
3	2	ECG3	GASKET - END CAP, 1/4" & 3/8" VALVE
2	6	V-182	O-RING, URETHANE, 70 DURO, AS-116, (REF 3/4X15/16X3/32), 1/4" & 3/8" VALVES
1	1	BP3-3E	BODY - SOLID, PLAIN, LOWER PILOT, 3/8" SUBPLATE VALVE

LIMITS ON DIMENSIONS UNLESS OTHERWISE SPECIFIED		2-PL DECIMAL ± .01 3-PL DECIMAL ± .005 FRACTIONAL ± 1/64 ANGULAR ± 1/2°		AAA PRODUCTS INTERNATIONAL 7114 Harry Hines Blvd Dallas, TX 75235
DRAWN: RMckenna	DATE: 6/3/2009	CHECKED: KWaite	DATE: 5/27/2015	
SCALE: 1 : 1	SHEET: 1 OF 1	RELEASED: HWomack	DATE: 5/27/2015	
TITLE: 3/8" SUBPLATE, SGNL PILOT, 2 POS, SPRING RTRN, DOW 55, 500 PSI, URETHANE BODY O-RINGS			PART NO.: 610V	REV.:



4 | 3 | 2

D:\Engineering\Product\Valves\Asm\Bdy\Pilot\Spec\DWG 16 10V.dwg