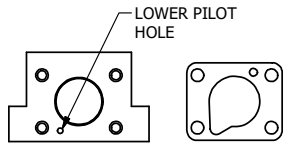
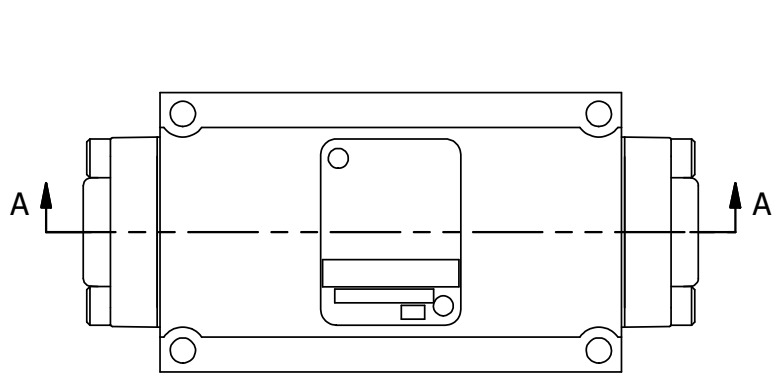


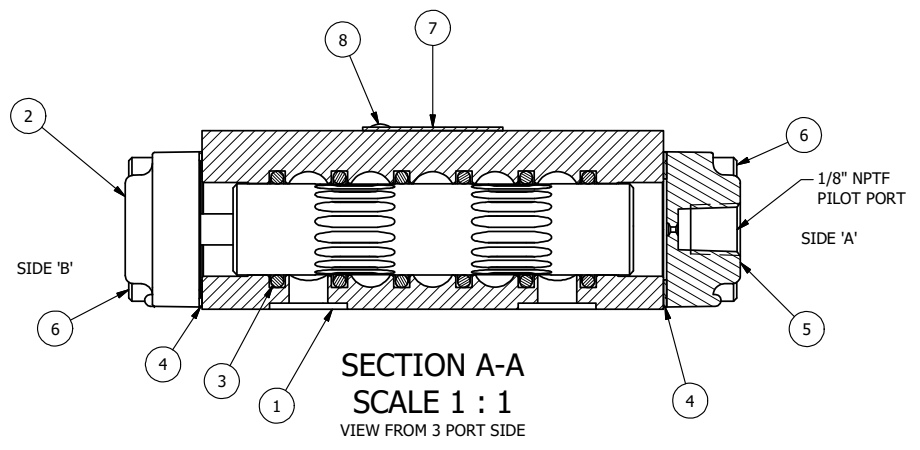
4 | 3 | 2 | 1



POSITION GASKET TO OPEN
LOWER PILOT TO VALVE
BOTH SIDES (SIDE 'A' SHOWN)

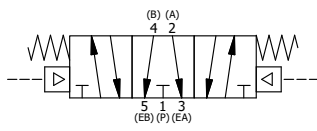
DOW 55 GREASE URETHANE O-RINGS

- NOTES:
- 1) ALWAYS GIVE VALVE MODEL AND PART NUMBER WHEN ORDERING PARTS.
 - 2) USE DOW 55 GREASE TO LUBRICATE VALVE.
 - 3) USE URETHANE O-RINGS.
 - 4) MARK TAG FOR 500 PSI MAX. AND 250 PSI MAX. PILOT.
 - 5) STANDARD RY2 TESTS AT 60 AND 120 PSI.
 - 6) TEST SHIFT WITH 500 PSI IN PORT 1, PORTS 2 & 4 PLUGGED, PILOT SHIFT WITH 80 PSI.



FLG	QTY	PART NO	DESCRIPTION
9	1	SPK-3	KIT - SUBPLATE MOUNTING, 3/8" SUBPLATE VALVES
8	2	V-212	SCREW, 2 X 3/16, DRIVE, TYPE U, OVAL HEAD, 316 SS
7	1	AN-114	NAME PLATE, BLANK, FOR VALVES WITH SPRINGS OR DETENTS.
6	8	V-38	SCREW, 10-24 X 3/4, SOCKET HEAD CAP
5	1	PEC3	END CAP, PILOT, 380 AL, 1/4" & 3/8" VALVE
4	2	ECG3	GASKET - END CAP, 1/4" & 3/8" VALVE
3	6	V-182	O-RING, URETHANE, 70 DURO, AS-116, (REF 3/4X15/16X3/32), 1/4" & 3/8" VALVES
2	1	AY-RY3G	ASSY - SPR CTR, FLOAT CTR SPL REMOTE PILOT, 1/4 & 3/8 VALVES
1	1	BP3-3E	BODY - SOLID, PLAIN, LOWER PILOT, 3/8" SUBPLATE VALVE

LIMITS ON DIMENSIONS UNLESS OTHERWISE SPECIFIED		2-PL DECIMAL ± .01 3-PL DECIMAL ± .005 FRACTIONAL ± 1/64 ANGULAR ± 1/2°		AAA PRODUCTS INTERNATIONAL 7114 Harry Hines Blvd Dallas, TX 75235
DRAWN: RMckenna	DATE: 6/3/2009	CHECKED: KWaitte	DATE: 5/27/2015	
SCALE: 1 : 1	SHEET: 1 OF 1	RELEASED: HWomack	DATE: 5/27/2015	
TITLE: 3/8" SUBPLATE, DBL PILOT, 3 POS, SPR CTR, PILOT SHFT, FLOAT CTR SPL, DOW 55, 500 PSI, URETHANE O-RINGS			PART NO.: 609V	REV.:



4 | 3 | 2

THE INFORMATION CONTAINED WITHIN THIS DOCUMENT IS PROPRIETARY TO AAA PRODUCTS AND MAY NOT BE DISCLOSED WITHOUT PRIOR WRITTEN CONSENT

D:\Engineering\Inventor Files\Internal Drawings\Valves Assembly\Pilot Special\609V.dwg