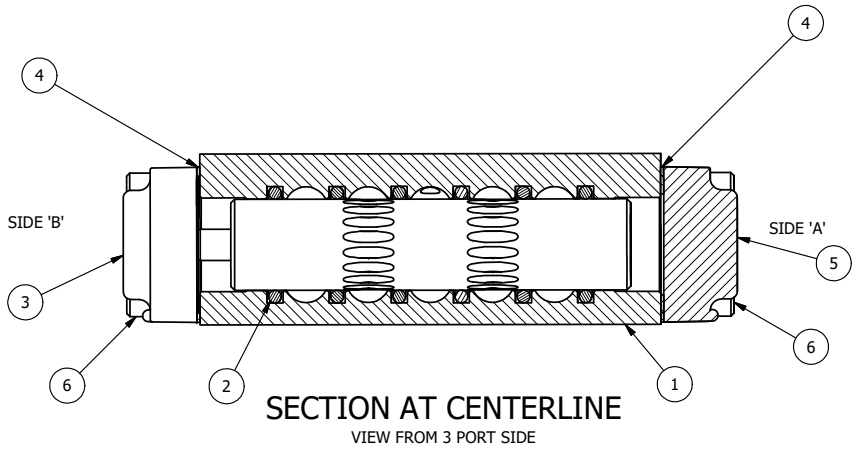
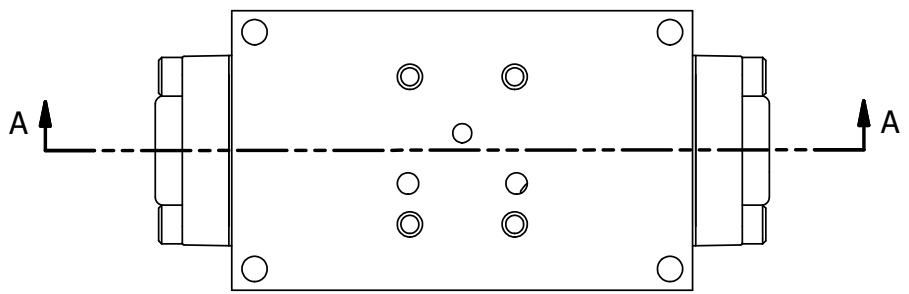
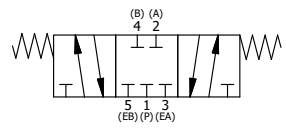


ALIGN PILOT HOLE AND CENTER CUTOUT
ON BOTH SIDES.


- NOTES:
- 1) ALWAYS GIVE VALVE MODEL AND PART NUMBER WHEN ORDERING PARTS.
 - 2) USE LOCKTITE 242 (BLUE) ON ALL FASTENERS.
 - 3) REPAIR KIT RKV-440VY.
 - 4) USE MAGNALUBE-G GREASE ON O-RINGS.
 - 5) TEST IN CENTER POSITION FOR 20 SECONDS, THE OTHER POSITIONS FOR 5 SECONDS EACH.



SECTION AT CENTERLINE
VIEW FROM 3 PORT SIDE



| | | | |
|-----|-----|-----------|---|
| 6 | 8 | V-38-SS | SCREW, 10-24 X 3/4, SOCKET HEAD CAP, 18-8 SS |
| 5 | 1 | SEC3-1-EN | END CAP, NON-VENTED, 380 AL, E-NICKEL PLATED, 1/4" & 3/8" VALVE |
| 4 | 2 | ECG3-9 | GASKET - END CAP, NITRILE, 1/4" & 3/8" VALVE |
| 3 | 1 | AY-EY3-EN | ASSY - SPR CTR, CLSD CTR SPL, CLASSIC SOL, EN & SS HARDWARE, 1/4 & 3/8 VALVES |
| 2 | 6 | V-39 | O-RING, VITON, STD BODY, 1/4" & 3/8" VALVES |
| 1 | 1 | B2-6E-TC | BODY - SOLID, PIGGY BACK, TUFRAM, 1/4" SIDE PORT VALVE |
| FLG | QTY | PART NO | DESCRIPTION |

| | | | | |
|---|--|--|--|-----------------|
| LIMITS ON DIMENSIONS UNLESS OTHERWISE SPECIFIED | | 2-PL DECIMAL ± .01 3-PL DECIMAL ± .005 FRACTIONAL ± 1/64 ANGULAR ± 1/2° |  AAA PRODUCTS INTERNATIONAL 7114 Harry Hines Blvd Dallas, TX 75235 | |
| DRAWN: RMckenna | | DATE: 9/5/2013 | CHECKED: KWaite | DATE: 5/30/2015 |
| SCALE: 1 : 1 | | SHEET: 1 OF 1 | RELEASED: HWomack | DATE: 5/30/2015 |
| TITLE: 1/4" SIDE PORT, 3 POS, SPR CTR, CLSD CTR SPOOL, NO SOL PIGGY BACK, 495VY, 496VY, 497VY, 498VY | | | PART NO.: 499VY | REV.: A |

| | | |
|-----|---------|------------------------------|
| A | 4/22/09 | CHANGED FROM V-20 TO V-30-SS |
| NO. | DATE | REVISION |

THE INFORMATION CONTAINED WITHIN THIS DOCUMENT IS PROPRIETARY TO AAA PRODUCTS AND MAY NOT BE DISCLOSED WITHOUT PRIOR WRITTEN CONSENT

D:\Engineering\Products\Valves\Assembly\CLASSIC\Special\DWG\499VY.dwg