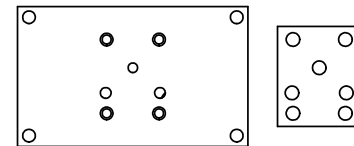


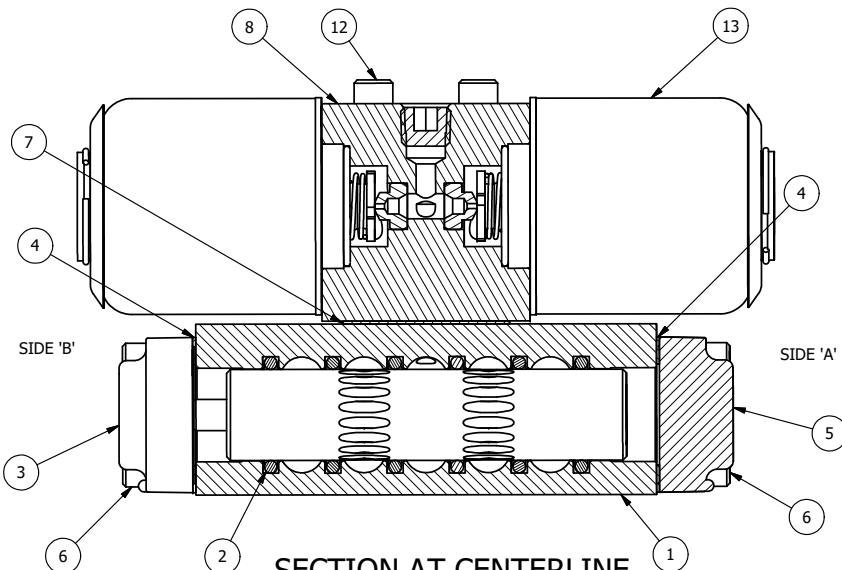
ALIGN PILOT HOLE AND CENTER CUTOUT ON BOTH SIDES.



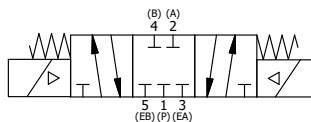
ALIGN HOLES IN GASKET AS SHOWN.
(FOR EXTERNAL PILOT PRESSURE, REMOVE PIGGY BACK BLOCK AND ROTATE 180°. LEAVE GASKET AS SHOWN. REMOVE 1/8" PLUG AND CONNECT SUPPLY PRESSURE - 160 PSI MAX.)

NOTES:


- 1) ALWAYS GIVE VALVE MODEL AND PART NUMBER WHEN ORDERING PARTS.
- 2) 24VDC COIL.
- 3) USE LOCKTITE 242 (BLUE) ON ALL FASTENERS.
- 4) REPAIR KIT RKV-440VY.
- 5) USE MAGNALUBE-G GREASE ON O-RINGS.
- 6) USE WHITE PIPE DOPE ON PLUG.
- 7) TEST IN CENTER POSITION FOR 20 SECONDS, THE OTHER POSITIONS FOR 5 SECONDS EACH.
- 8) HI-POTENTIAL BREAK DOWN TEST REQUIRED.



SECTION AT CENTERLINE
VIEW FROM 3 PORT SIDE



14	2	V-645	ANTI-SHORT BUSHING, 1/2" CONDUIT
13	2	AY-38X-8	CLASSIC SOLENOID - EXPLOSION PROOF, 24VDC, 88/60VAC, 78/50VAC
12	4	V-1-SS	SCREW, 10-24 X 2, SOCKET HEAD CAP, STAINLESS STEEL
11	2	V-212	SCREW, #2 X 3/16 DRIVE, TYPE U, OVAL HEAD, STAINLESS STEEL
10	1	AN-114	NAMEPLATE, BLANK, FOR VALVES WITH SPRINGS OR DETENTS
9	1	V-19-SS	PLUG, 1/8-27 NPT, 7/8 TAPER, FLUSH SEAL, SOCKET PIPE PLUG, STAINLESS
8	1	PB3-2E-TC	ADAPTOR - DOUBLE SOLENOID, TUFRAM COAT, 1/4" & 3/8" VALVES
7	1	PBG3-9	GASKET - PIGGY BACK, DOUBLE SOLENOID, NITRILE, 1/4" & 3/8" VALVE
6	8	V-38-SS	SCREW, 10-24 X 3/4, SOCKET HEAD CAP, 18-8 SS
5	1	SEC3-1-EN	END CAP, NON-VENTED, 380 AL, E-NICKEL PLATED, 1/4" & 3/8" VALVE
4	2	ECG3-9	GASKET - END CAP, NITRILE, 1/4" & 3/8" VALVE
3	1	AY-EY3-EN	ASSY - SPR CTR, CLSD CTR SPL, CLASSIC SOL, EN & SS HARDWARE, 1/4 & 3/8 VALVES
2	6	V-39	O-RING, VITON, STD BODY, 1/4" & 3/8" VALVES
1	1	B2-6E-TC	BODY - SOLID, PIGGY BACK, TUFRAM, 1/4" SIDE PORT VALVE
FLG	QTY	PART NO	DESCRIPTION

LIMITS ON DIMENSIONS UNLESS OTHERWISE SPECIFIED		2-PL DECIMAL ± .01 3-PL DECIMAL ± .005 FRACTIONAL ± 1/64 ANGULAR ± 1/2°		 AAA PRODUCTS INTERNATIONAL 7114 Harry Hines Blvd Dallas, TX 75235	
DRAWN: RMcKenna		DATE: 9/5/2013		CHECKED: KWalte	
SCALE: 1 : 1		SHEET: 1 OF 1		DATE: 5/30/2015	
				RELEASED: HWomack	
				DATE: 5/30/2015	
TITLE: 1/4" SIDE PORT, DBL SOL, 3 POS, SPR CTR, SOL RTRN, CLSD CTR SPL, EXPL PROOF, TUFRAM, 24VDC				PART NO.: 497VY	
				REV.: C	

C	4/17/12	CHANGED ADAPTOR PART NUMBER.
B	5/26/10	SIMPLIFIED SOL ASSY TO V-280-S.
A	4/22/09	CHANGED FROM V-20 TO V-30-SS
NO.	DATE	REVISION

THE INFORMATION CONTAINED WITHIN THIS DOCUMENT IS PROPRIETARY TO AAA PRODUCTS AND MAY NOT BE DISCLOSED WITHOUT PRIOR WRITTEN CONSENT