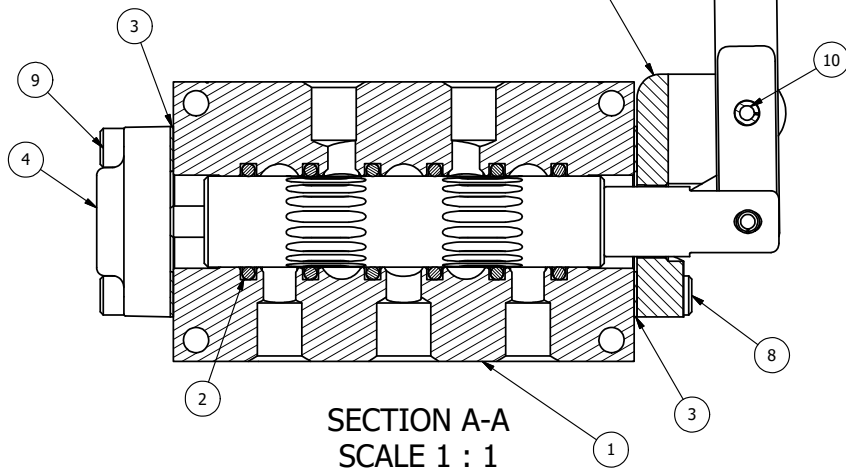


POSITION GASKET ON END OF VALVE SO MOUNTING HOLES ALIGN BOTH ENDS

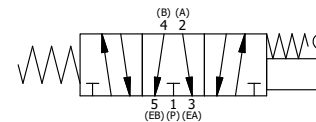
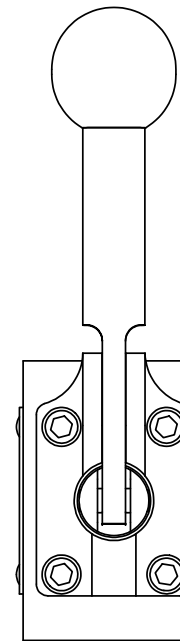
NOTES:
1) ALWAYS GIVE VALVE MODEL NUMBER AND PART NUMBER WHEN ORDERING PARTS.

**NO FERROUS OR MAGNETIC METALS.
USE MAGNET TO CHECK COMPONENTS.
(CHANGE TO LOW MAGNETIC PERMEABILITY)**

FLG	QTY	PART NO	DESCRIPTION
12	2	V-212	SCREW, #2 X 3/16 DRIVE, TYPE U, OVAL HEAD, 316 STAINLESS STEEL
11	1	AN-106	316 SS NAMEPLATE BLANK
10	1	V-542-SS	PIN, ROLL 3/16 X 1/2 NON-MAGNETIC STAINLESS STEEL FOR HE3-4 END CAP
9	4	V-38-SS	SCREW, 10-24 X 3/4 SHCS, 18-8 SS
8	4	V-162-SS	SCREW, 10-24 X 5/8 STAINLESS STEEL
7	1	V-580	KNOB, BLACK (BRASS 3/8-16 INSERT), 1" DIA BALL
6	1	HL3-SS	HAND LEVER, 303 STAINLESS STEEL, 1/4" & 3/8" VALVE
5	1	HE3-4	ENDCAP - HAND OPERATOR, 303 STAINLESS, 1/4" & 3/8" STACK VALVE
4	1	AY-486VY	ASSY - SPR CTR, FLOAT CTR SPL, LEVER/TREADLE, LOW MAG STAINLESS, 1/4" & 3/8" VALVES
3	2	ECG3	GASKET - END CAP, 1/4" & 3/8" VALVE
2	6	V-39	O-RING, STD BODY, VITON, 1/4" & 3/8" VALVES
1	1	B2-2E	BODY - SOLID, PLAIN, NO PILOTS, ANODIZED, 1/4" SIDE PORT VALVE
FLG	QTY	PART NO	DESCRIPTION



SECTION A-A
SCALE 1 : 1



LIMITS ON DIMENSIONS UNLESS OTHERWISE SPECIFIED		2-PL DECIMAL ± .01 3-PL DECIMAL ± .005 FRACTIONAL ± 1/64 ANGULAR ± 1/2°		AAA PRODUCTS INTERNATIONAL 7114 Harry Hines Blvd Dallas, TX 75235
DRAWN: RMckenna	DATE: 5/14/2008	CHECKED: KWaite	DATE: 5/28/2015	
SCALE: 1 : 1	SHEET: 1 OF 1	RELEASED: HWomack	DATE: 5/28/2015	
TITLE: 1/4" SIDE PORT, LEVER, 3 POS, SPR CTR, LVR SHFT, FLOAT CTR SPL, LOW MAGNETIC PERMEABILITY			PART NO.: 486VY	REV.:

THE INFORMATION CONTAINED WITHIN THIS DOCUMENT IS PROPRIETARY TO AAA PRODUCTS AND MAY NOT BE DISCLOSED WITHOUT PRIOR WRITTEN CONSENT

P:\Engineering\Inventory Files\Internal Drawings\Valves Assembly\Lever\Special\486VY.dwg