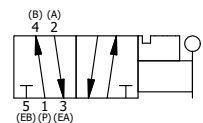


POSITON GASKET ON END OF VALVE SO
GASKET COVERES PILOT HOLE
BOTH SIDES (SIDE 'A' SHOWN)

NOTES:
1) ALWAYS GIVE VALVE MODEL AND PART NUMBER WHEN ORDERING PARTS.
2) LUBRICATE SPRING AND PIN.
3) DO NOT APPLY LOCTITE TO KNOBS.

FLG	QTY	PART NO	DESCRIPTION
19	1	SPK-8	KIT - SUBPLATE MOUNT, 1" SUBPLATE VALVES
18	1	V-9	KNOB, BLACK (BRASS 3/8-24 INSERT), 1 5/8 DIA, HANDLE LEVER. 1/2" THRU 1"
17	1	HL8-C	HAND LEVER - CURVED, 3/4" & 1" VALVES
16	2	V-212	SCREW, #2 X 3/16 DRIVE, TYPE U, OVAL HEAD, 316 STAINLESS STEEL
15	1	AN-115	BLANK NAMEPLATE FOR HE,KE,KD,RR,D,CR,PP,SR,SS VALVES.
14	1	V-570	KNOB, BLACK (BRASS 1/4-20 INSERT), OS OPTION
13	1	V-549	SPRING - PINLOCK, 3/4" & 1" VALVE
12	1	BPR8	BUSHING - PIN LOCK, PIN RETAINER, 3/4" & 1" VALVES
11	1	PPL8	PIN - PIN LOCK, 303 STAINLESS, 3/4" & 1" VALVES
10	8	V-46	SCREW, 1/4-20 X 3/4 SHCS, HOLDS E.C TO 1/2-1" VALVES
9	1	V-51-SS	PIN, ROLL 1/4 X 1 FOR 3/4 & 1" HAND FOOT & CAM VALVES, STAINLESS STEEL
8	1	V-70	PIN, ROLL 1/4 X 1 1/8 FOR 3/4 & 1" HAND AND FOOT VALVES
7	1	SC8-482V	CLEVIS - C POS. PIN LOCK, 3/4" & 1" VALVE
6	1	FE8-4	END CAP, HAND & FOOT, PIN LOCK, STEEL, NICKEL PLT, 3/4" & 1" VALVES
5	1	S8	SPOOL - STANDARD, 2 POS, CLSD CTR, 3/4" & 1" VALVE
4	1	PEC48	END CAP, PILOT, 380 AL, 1/2", 3/4" & 1" VALVES
3	2	ECG48	GASKET - END CAP, 1/2", 3/4" & 1" VALVE
2	6	V-88	O-RING, 1 3/8 X 1 5/8 X 1/8, VITON, F-7001, 75D, ASS68A-220, 3/4" & 1" VALVES
1	1	BPR-1	BODY, 1" SUBPLATE, UPPER PILOTS, ANODIZED
FLG	QTY	PART NO	DESCRIPTION

SECTION A-A
SCALE 3/4
VIEW FROM 3 PORT SIDE



LIMITS ON DIMENSIONS UNLESS OTHERWISE SPECIFIED		2-PL DECIMAL ± .01 3-PL DECIMAL ± .005 FRACTIONAL ± 1/64 ANGULAR ± 1/2°		<p>AAA PRODUCTS INTERNATIONAL 7114 Harry Hines Blvd Dallas, TX 75235</p>
DRAWN: RMckenna	DATE: 2/6/2009	CHECKED: KWaite	DATE: 5/28/2015	
SCALE: 3/4	SHEET: 1 OF 1	RELEASED: HWomack	DATE: 5/28/2015	
TITLE: 1" SUBPLATE, LEVER, 2 POS, FRICTION POS, LVR SHFT, PINLOCK POS C, VITON O-RINGS			PART NO.: 482VP	REV.:

THE INFORMATION CONTAINED WITHIN THIS DOCUMENT IS PROPRIETARY TO AAA PRODUCTS AND MAY NOT BE DISCLOSED WITHOUT PRIOR WRITTEN CONSENT

D:\Engineering\Inventory Files\Internal Drawings\Valves Assembly\Lever\Special\482VP.dwg