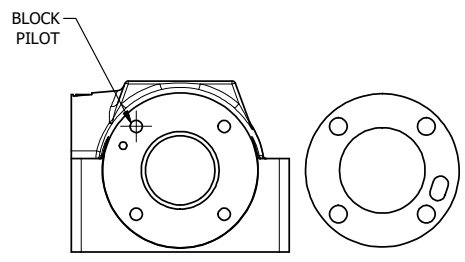
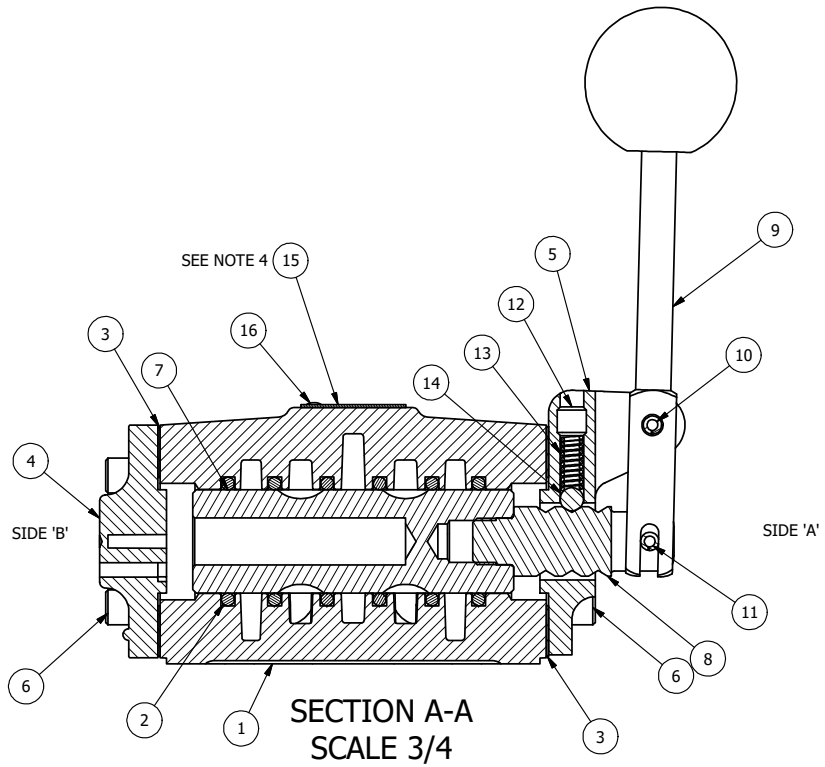


DOW 55 GREASE



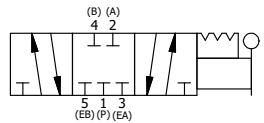
POSITION GASKET ON END OF VALVE SO
GASKET COVERS PILOT HOLE
BOTH SIDES (SIDE 'A' SHOWN)

- NOTES:
 1) ALWAYS GIVE VALVE MODEL AND PART NUMBER WHEN ORDERING PARTS.
 2) LUBRICATE DETENT BALL, SPRING AND CLEVIS.
 3) USE DOW-55 GREASE.
 4) TEST AND MARK FOR 300 PSI SERVICE.



PLG	QTY	PART NO	DESCRIPTION
16	2	V-212	SCREW, 2 X 3/16, DRIVE, TYPE U, OVAL HEAD, 316 SS
15	1	AN-114	NAME PLATE, BLANK, FOR VALVES WITH SPRINGS OR DETENTS.
14	1	V-4	BALL, CHROME STEEL 1/4 DIA. FOR DETENT
13	1	DS48	SPRING - DETENT, 1/2", 3/4" & 1" VALVE
12	1	V-8	SCREW, 5/16-18 X 5/16, SOCKET SET, CUP POINT
11	1	V-7	PIN, ROLL 3/16 X 11/16 FOR 1/4 THRU 1/2" HAND, FT. & CAM V
10	1	V-10	PIN, ROLL 3/16 X 7/8
9	1	HL4-9	HAND LEVER ASSEMBLY, 1/2" VALVE
8	1	SC4-3	CLEVIS - 3 POS. DETENT, 1/2" VALVE
7	1	S4	SPOOL - STANDARD, 2 POS, CLSD CTR, 1/2" VALVE
6	8	V-46	SCREW, 1/4-20 X 3/4, SOCKET HEAD CAP
5	1	FE4-3	END CAP - HAND & FOOT, DETENT, 380 AL, 1/2" VALVE
4	1	PEC48-3	END CAP, VENTED, 380 AL, 1/2", 3/4" & 1" VALVES
3	2	ECG48	GASKET - END CAP, 1/2", 3/4" & 1" VALVE
2	6	V-100	O-RING, URETHANE, 70 DURO, AS-216, (REF 1-1/8 X 1-3/8 X 1/8) 1/2" VALVES, 1" SUBPLATE
1	1	B4-1	BODY, 1/2" SIDE PORT, UPPER PILOTS, ANODIZED

LIMITS ON DIMENSIONS UNLESS OTHERWISE SPECIFIED		2-PL DECIMAL ± .01 3-PL DECIMAL ± .005 FRACTIONAL ± 1/64 ANGULAR ± 1/2°		AAA PRODUCTS INTERNATIONAL 7114 Harry Hines Blvd Dallas, TX 75235
DRAWN: RMcKenna	DATE: 2/20/2008	CHECKED: KWhite	DATE: 5/28/2015	
SCALE: 3/4	SHEET: 1 OF 1	RELEASED: HWomack	DATE: 5/28/2015	
TITLE: 1/2" SIDE PORT, LEVER, 3 POS, DETENT, LEVER SHFT, CLSD CTR SPL URETHANE O-RINGS, 300 PSI, DOW 55			PART NO.: 479V	REV.:



THE INFORMATION CONTAINED WITHIN THIS DOCUMENT IS PROPRIETARY TO AAA PRODUCTS AND MAY NOT BE DISCLOSED WITHOUT PRIOR WRITTEN CONSENT

D:\Engineering\Inventor Files\Internal Drawings\Valves Assembly\Level Special\479V.dwg