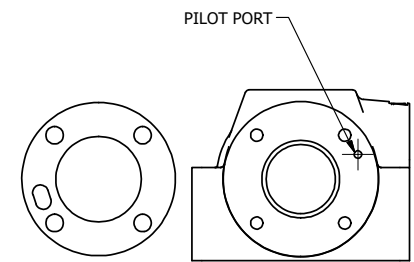
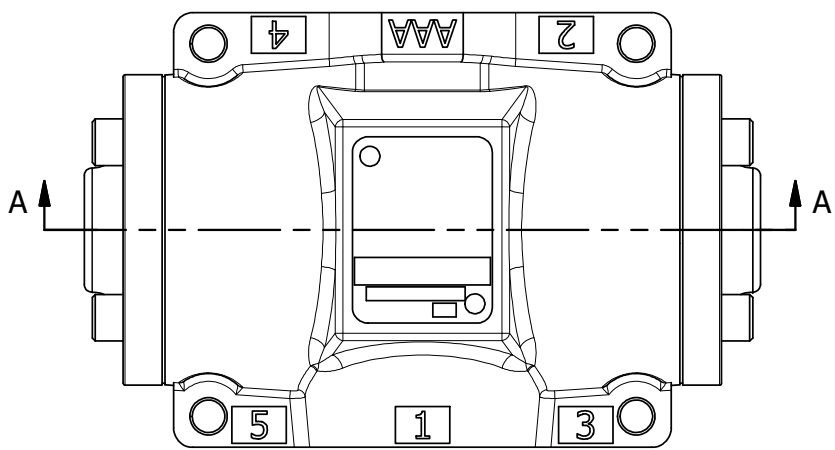


4 | 3 | 2 | 1

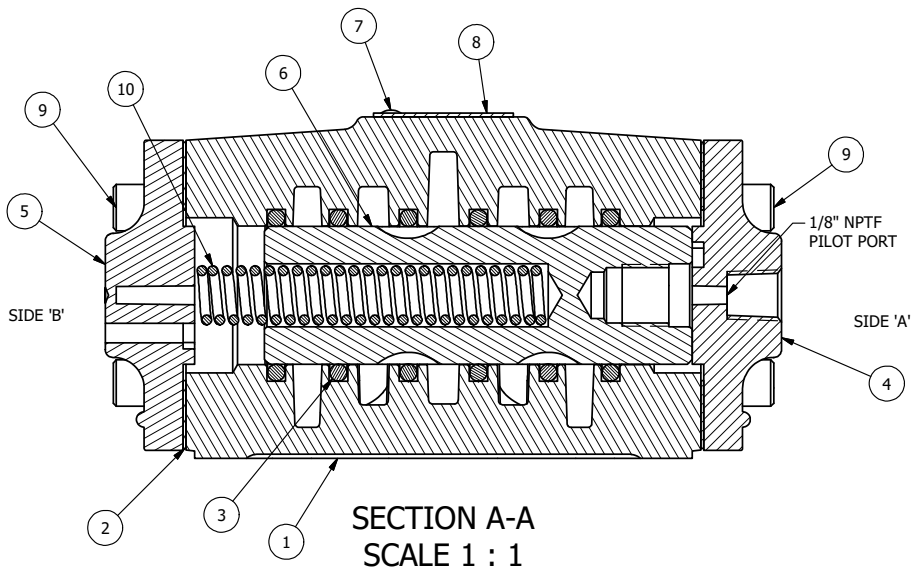


POSITON GASKET ON END OF VALVE SO GASKET COVERS PILOTS BOTH SIDE (SIDE 'B' SHOWN)

### DOW 55 GREASE

**NOTES:**

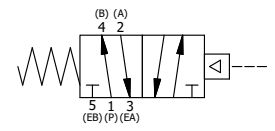
- 1) ALWAYS GIVE VALVE MODEL AND PART NUMBER WHEN ORDERING PARTS.
- 2) USE DOW 55 GREASE.
- 3) STANDARD TESTING, PLUS CHECK SHIFT AT 300 PSI. MARK FOR 300 PSI SERVICE.



SECTION A-A  
SCALE 1 : 1

FLG	QTY	PART NO	DESCRIPTION
10	1	CS4	SPRING - RETURN, 1/2" VALVES
9	8	V-46	SCREW, 1/4-20 X 3/4, SOCKET HEAD CAP
8	1	AN-114	NAME PLATE, BLANK, FOR VALVES WITH SPRINGS OR DETENTS.
7	2	V-212	SCREW, 2 X 3/16, DRIVE, TYPE U, OVAL HEAD, 316 SS
6	1	S4	SPOOL - STANDARD, 2 POS, CLSD CTR, 1/2" VALVE
5	1	PEC48-3	END CAP, VENTED, 380 AL, 1/2", 3/4" & 1" VALVES
4	1	PEC48	END CAP, PILOT, 380 AL, 1/2", 3/4" & 1" VALVES
3	6	V-100	O-RING, URETHANE, 70 DURO, AS-216, (REF 1-1/8 X 1-3/8 X 1/8) 1/2" VALVES, 1" SUBPLATE
2	2	ECG48	GASKET - END CAP, 1/2", 3/4" & 1" VALVE
1	1	B4-1	BODY, 1/2" SIDE PORT, UPPER PILOTS, ANODIZED

LIMITS ON DIMENSIONS UNLESS OTHERWISE SPECIFIED		2-PL DECIMAL ± .01 3-PL DECIMAL ± .005 FRACTIONAL ± 1/64 ANGULAR ± 1/2°		<b>AAA PRODUCTS INTERNATIONAL</b> 7114 Harry Hines Blvd Dallas, TX 75235
DRAWN: RMcKenna	DATE: 2/20/2008	CHECKED: KWaitte	DATE: 5/27/2015	
SCALE: 1 : 1	SHEET: 1 OF 1	RELEASED: HWomack	DATE: 5/27/2015	
TITLE: 1/2" SIDE PORT, SNGL PILOT, 2 POS, SPRING RTRN, DOW 55, 300 PSI, URETHANE BODY O-RINGS			PART NO.: 478V	REV.:



4 | 3 | 2

THE INFORMATION CONTAINED WITHIN THIS DOCUMENT IS PROPRIETARY TO AAA PRODUCTS AND MAY NOT BE DISCLOSED WITHOUT PRIOR WRITTEN CONSENT

D:\Engineering\Inventor Files\Internal Drawings\Valves\Assembly\1/2" Pilot\Special\478V.dwg