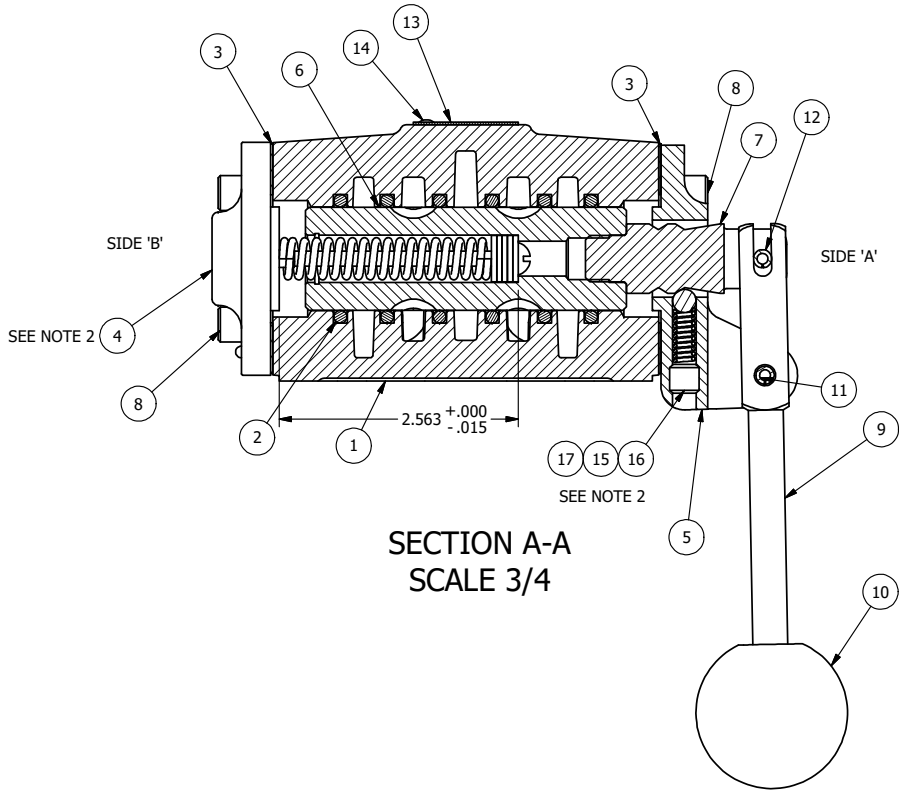


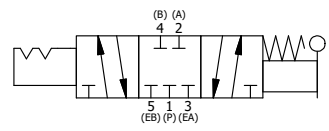
POSITION GASKET ON END OF VALVE SO GASKET COVERS PILOT HOLE BOTH SIDES (SIDE 'A' SHOWN)

- NOTES:
 1) ALWAYS GIVE VALVE MODEL AND PART NUMBER WHEN ORDERING PARTS.
 2) LUBRICATE SPRINGS, AND DETENT BALL.



SECTION A-A
SCALE 3/4

17	1	DS48	SPRING - DETENT, 1/2", 3/4" & 1" VALVE
16	1	V-8	SCREW, 5/16-18 X 5/16, SOCKET SET, CUP POINT
15	1	V-4	BALL, CHROME STEEL 1/4 DIA. FOR DETENT
14	2	V-212	SCREW, 2 X 3/16, DRIVE, TYPE U, OVAL HEAD, 316 SS
13	1	AN-114	NAME PLATE, BLANK, FOR VALVES WITH SPRINGS OR DETENTS.
12	1	V-7	PIN, ROLL 3/16 X 11/16 FOR 1/4 THRU 1/2" HAND, FT. & CAM V
11	1	V-10	PIN, ROLL 3/16 X 7/8
10	1	V-9	KNOB, BLACK (BRASS 3/8-24 INSERT), 1 5/8 DIA, HANDLE LEVER. 1/2" THRU 1"
9	1	HL4	HAND LEVER, 1/2" VALVE
8	8	V-46	SCREW, 1/4-20 X 3/4, SOCKET HEAD CAP
7	1	SC4-331VY	CLEVIS - 331VY, 189VY ACTION, 1/2" VALVE
6	1	SSH4	SPOOL - STANDARD, 3 POS, CLSD CTR, 1/2" VALVE
5	1	FE4-3	END CAP - HAND & FOOT, DETENT, 380 AL, 1/2" VALVE
4	1	AY-HW4	ASSY - SPR CTR FROM A, 189VY ACTION, 1/2" VALVE
3	2	ECG48	GASKET - END CAP, 1/2", 3/4" & 1" VALVE
2	6	V-6	O-RING, BUNA-N, 70 DURO, AS-216, (REF 1-1/8 X 1-3/8 X 1/8), 1/2" VALVES, 1" SUBPLATE
1	1	B4-1	BODY, 1/2" SIDE PORT, UPPER PILOTS, ANODIZED
PLG	QTY	PART NO	DESCRIPTION



LIMITS ON DIMENSIONS UNLESS OTHERWISE SPECIFIED		2-PL DECIMAL ± .01 3-PL DECIMAL ± .005 FRACTIONAL ± 1/64 ANGULAR ± 1/2°		AAA PRODUCTS INTERNATIONAL 7114 Harry Hines Blvd Dallas, TX 75235
DRAWN: RHuffstetter	DATE: 10/16/2002	CHECKED: KWhite	DATE: 5/28/2015	
SCALE: 3/4	SHEET: 1 OF 1	RELEASED: HWomack	DATE: 5/28/2015	
TITLE: 1/2" SIDE PORT, 3 POS, DETENT C, SPR CTR FROM A, CLSD CTR SPL, LVR 180D (HW4T)		PART NO.: 430VY	REV.:	

THE INFORMATION CONTAINED WITHIN THIS DOCUMENT IS PROPRIETARY TO AAA PRODUCTS AND MAY NOT BE DISCLOSED WITHOUT PRIOR WRITTEN CONSENT

D:\Engineering\Inventor Files\Internal Drawings\Valves\Assembly\Level Special\430VY.dwg