


POSITION GASKET ON END OF VALVE SO
MOUNTING HOLES ALIGN
BOTH ENDS (SIDE 'B' SHOWN)

NOTES:

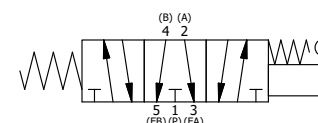
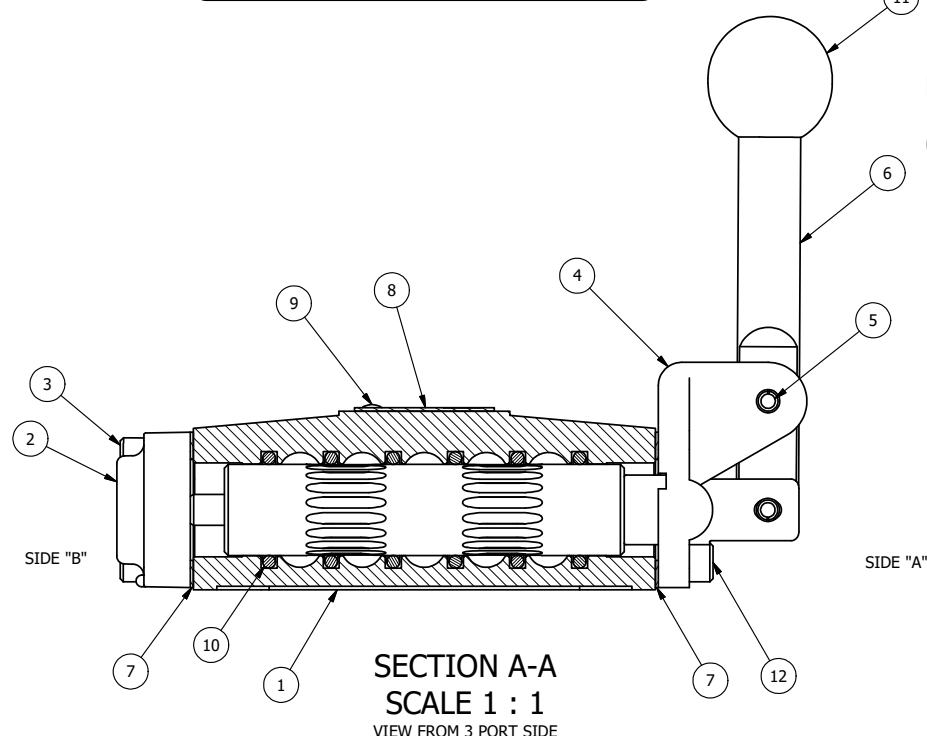
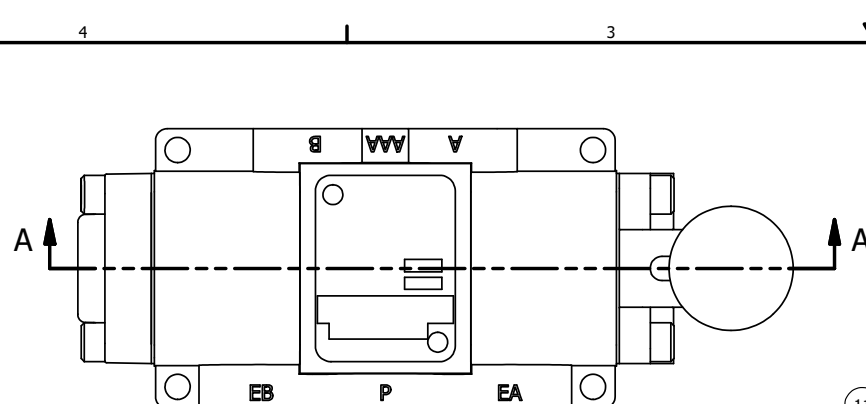
- 1) ALWAYS GIVE VALVE MODEL, AND PART NUMBER WHEN ORDERING PARTS.
- 2) APPLY ANTI-SEIZE COMPOUND LIGHTLY TO THE FIRST 1/4" OF THE SCREW THREAD. APPLICATION SHOULD BE AROUND THE THREAD OF THE SCREW.

**NO FERROUS OR MAGNETIC METALS.
USE MAGNET TO CHECK COMPONENTS.
(CHANGE DESC. TO LOW MAGNETIC PERMEABILITY)**

12	4	V-162-SS	SCREW, 10-24 X 5/8, SOCKET HEAD CAP, STAINLESS STEEL
11	1	V-580	KNOB, BLACK (BRASS 3/8-16 INSERT), 1" DIA BALL
10	6	V-39	O-RING, VITON, STD BODY, 1/4" & 3/8" VALVES
9	2	V-212	SCREW, #2 X 3/16 DRIVE, TYPE U, OVAL HEAD, STAINLESS STEEL
8	1	AN-106	NAMEPLATE, BLANK, STAINLESS STEEL
7	2	ECG3	GASKET - END CAP, 1/4" & 3/8" VALVE
6	1	HL3-SS	HAND LEVER, 303 STAINLESS STEEL, 1/4" & 3/8" VALVE
5	1	V-631	PIN, ROLL 3/16 X 5/8, NON-MAGNETIC STAINLESS STEEL
4	1	HE3-5	END CAP, LEVER, 303 STAINLESS, 1/4" & 3/8" VALVE
3	4	V-38-SS	SCREW, 10-24 X 3/4, SOCKET HEAD CAP, 18-8 SS
2	1	AY-HY3G-SA	ASSY - SPR CTR, FLOAT CTR SPL, LEVER/TREADLE, STAINLESS, W/AL SPOOL, 1/4 & 3/8 VALVES
1	1	B3-2-SS	BODY - STAINLESS STEEL, PLAIN, NO PILOTS, 3/8" SIDE PORT VALVE
FLG	QTY	PART NO	DESCRIPTION

LIMITS ON DIMENSIONS UNLESS OTHERWISE SPECIFIED		2-PL DECIMAL $\pm .01$ 3-PL DECIMAL $\pm .005$ FRACTIONAL $\pm 1/64$ ANGULAR $\pm 1/2^\circ$		 AAA PRODUCTS INTERNATIONAL 7114 Harry Hines Blvd Dallas, TX 75235	
DRAWN: RHuffstetter		DATE: 11/14/2004		CHECKED: KWaitte	
SCALE: 1 : 1		SHEET: 1 OF 1		RELEASED: HWomack	
TITLE: 3/8" SIDE PORT, 3 POS., SPR CTR, LVR SHFT, FLOAT CTR SPL, STAINLESS, LOW MAGNETIC				PART NO.: 427VYG	
				REV.: B	

THE INFORMATION CONTAINED WITHIN THIS DOCUMENT IS PROPRIETARY TO AAA PRODUCTS AND MAY NOT BE DISCLOSED WITHOUT PRIOR WRITTEN CONSENT



B	7/24/08	REPLACED SSH3G-TC WITH SSH3G.
A	3/3/06	CHANGED GASKET FROM BCG TO ECG3.
NO.	DATE	REVISION