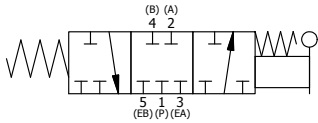


POSITION GASKET ON END OF VALVE SO MOUNTING HOLES ALIGN BOTH ENDS (SIDE 'A' SHOWN)

- NOTES:
 1) ALWAYS GIVE VALVE MODEL AND PART NUMBER WHEN ORDERING PARTS.
 2) NO NAME TAG ON VALVE. MARK PART NUMBER AND DATE CODE ON TOP OF BODY.
 3) PLUG PORTS 4 & 5 WITH V-337, INSTALL BM-2 MUFFLER IN PORT 3.

FLG	QTY	PART NO	DESCRIPTION
10	1	BM-2	1/4" SINTERED BRONZE MUFFLER
9	2	V-337	PLUG, SOCKET 1/4-18 FLUSH SEAL PLUG
8	1	V-7	PIN, ROLL 3/16 X 11/16 FOR 1/4 THRU 1/2" HAND, FT. & CAM V
7	8	V-38	SCREW, 10-24 X 3/4 SHCS, FOR 3/8" CAST END CAP
6	1	HL3-24	HAND LEVER WITH KNOB, 1/4" & 3/8" VALVE
5	1	HE3-1	END CAP, LEVER, 380 AL, 1/4" & 3/8" VALVE
4	1	AY-HY3	ASSY - SPR CTR, CLSD CTR SPL, LEVER OR TREADLE, 1/4 & 3/8 VALVES
3	2	ECG3	GASKET - END CAP, 1/4" & 3/8" VALVE
2	6	V-39	O-RING, STD BODY, VITON, 1/4" & 3/8" VALVES
1	1	B2-2E	BODY - SOLID, PLAIN, NO PILOTS, ANODIZED, 1/4" SIDE PORT VALVE

SECTION A-A
SCALE 1 : 1



LIMITS ON DIMENSIONS UNLESS OTHERWISE SPECIFIED		2-PL DECIMAL ± .01 3-PL DECIMAL ± .005 FRACTIONAL ± 1/64 ANGULAR ± 1/2°		AAA PRODUCTS INTERNATIONAL 7114 Harry Hines Blvd Dallas, TX 75235	
DRAWN: RMckenna	DATE: 8/4/2005	CHECKED: KWaite	DATE: 5/28/2015		
SCALE: 1 : 1	SHEET: 1 OF 1	RELEASED: HWomack	DATE: 5/28/2015		
TITLE: 1/4" SIDE PORT, LEVER, 3 POS, SPR CTR, LEVER SHFT, CLSD CTR SPL, PORTS 4 & 5 PLUGGED				PART NO.: 348V	REV.: A

A	NO.	DATE	REVISION
	3/2/06		CHANGED GASKET FROM BG3 TO ECG3.

THE INFORMATION CONTAINED WITHIN THIS DOCUMENT IS PROPRIETARY TO AAA PRODUCTS AND MAY NOT BE DISCLOSED WITHOUT PRIOR WRITTEN CONSENT

P:\Engineering\Inventory Files\Internal Drawings\Valves Assembly\Lever\Special\348V.dwg