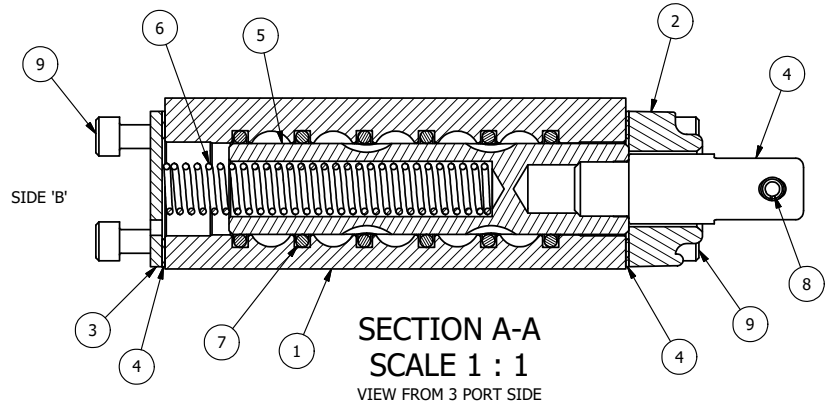


POSITION GASKET ON END OF VALVE SO MOUNTING HOLES ALIGN, BOTH ENDS (SIDE 'A' SHOWN)

SEE NOTE 1

- NOTES:
 1) SOCKET HEAD SCREW WILL NOT BE FLUSH. INSTALL 2 TEMPORARY SCREWS FOR TESTING AND REPLACE WITH V-38.
 2) VIEW FROM 3 PORT SIDE
 3) ALWAYS GIE VALVE MODEL NUMBER AND PART NUMBER WHEN ORDERING PARTS.

NO NAME TAG



SECTION A-A
SCALE 1 : 1
 VIEW FROM 3 PORT SIDE

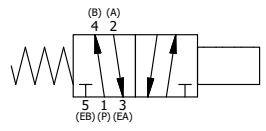
FLG	QTY	PART NO	DESCRIPTION
9	8	V-38	SCREW, 10-24 X 3/4 SHCS, FOR 3/8" CAST END CAP
8	1	V-48	PIN, ROLL 3/16 X 9/16 ZINC PLATED STEEL FOR 1/4 HAND & FOOT CLEVIS
7	6	V-39	O-RING, STD BODY, VITON, 1/4" & 3/8" VALVES
6	1	CS3-2	SPRING - RETURN, (HO & KO) 1/4" & 3/8" VALVES
5	1	S3	SPOOL - STANDARD, 2 POS, CLSD CTR, 1/4" & 3/8" VALVE
4	2	ECG3	GASKET - END CAP, 1/4" & 3/8" VALVE
4	1	HC3	CLEVIS - NO DETENTS, 1/4" & 3/8" VALVE
3	1	SEC3	END CAP, STEEL, ZINC PLT, 1/4" & 3/8" VALVE
2	1	PEC3-601V	END CAP, CLEVIS, 39/64 DIA, 380 AL, 1/4" & 3/8" VALVE
1	1	B2-2E	BODY - SOLID, PLAIN, NO PILOTS, ANODIZED, 1/4" SIDE PORT VALVE

LIMITS ON DIMENSIONS
 UNLESS OTHERWISE SPECIFIED
 2-PL DECIMAL ± .01
 3-PL DECIMAL ± .005
 FRACTIONAL ± 1/64
 ANGULAR ± 1/2°

AAA PRODUCTS INTERNATIONAL
 7114 Harry Hines Blvd
 Dallas, TX 75235

DRAWN: RMckenna DATE: 10/17/1995 CHECKED: KWaite DATE: 5/27/2015
 SCALE: 1 : 1 SHEET: 1 OF 1 RELEASED: HWomack DATE: 5/27/2015

TITLE: 1/4" SIDE PORT, STUD, 2 POS, SPRING RTRN	PART NO.: 334V	REV.: A
---	--------------------------	-------------------



A	NO.	DATE	MODIFIED THE SPRING FROM CS3.
		8/21/97	REVISION

P:\Engineering\Inventory Files\Internal Drawings\Valves Assembly\Main\Special\334V.dwg