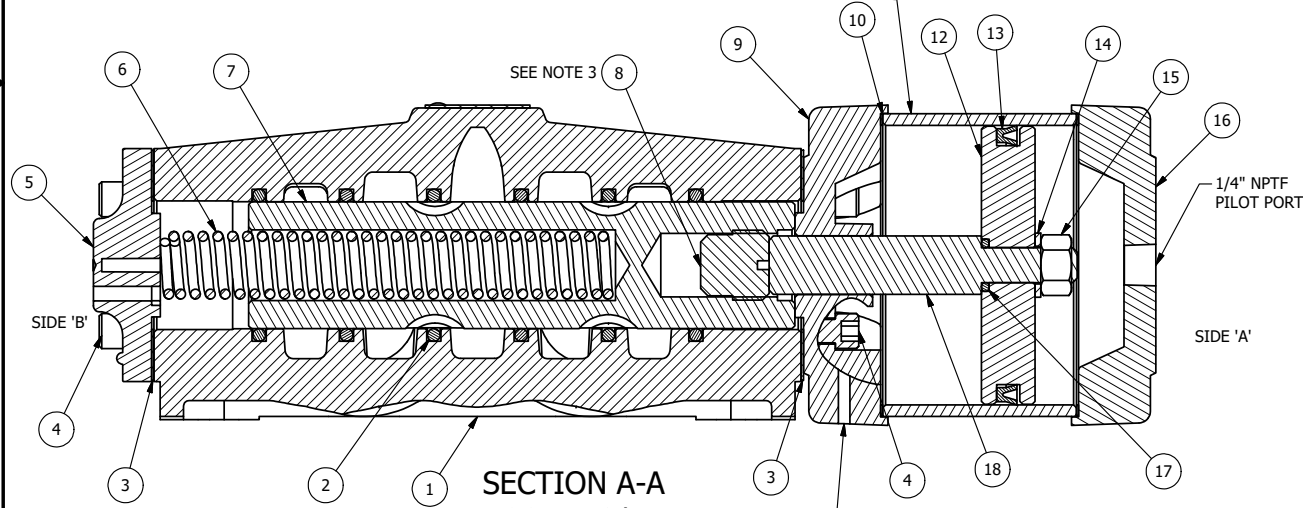


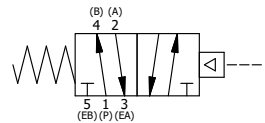
POSITION GASKET ON END OF VALVE SO
GASKET SEALS PILOT HOLE,
BOTH SIDES (SIDE 'A' SHOWN)



SECTION A-A
SCALE 3/4
VIEW FROM 3 PORT SIDE

- NOTES:
 1) ALWAYS GIVE VALVE MODEL AND PART NUMBER WHEN ORDERING PARTS.
 2) MINIMUM SHIFT PRESSURE OF 12 PSI ON PISTON PILOT PORTS.
 3) PLUG MUST BE BELOW FLUSH AND UP TO 0.400 DEPTH. VERIFY ASSEMBLY.

FLG	QTY	PART NO	DESCRIPTION
23	4	V-58	SCREW, 5/16-18 X 3-1/4, HEX HEAD, PLATED
22	4	V-104-SS	STAR WASHER 5/16" STAINLESS STEEL.
21	4	V-105-SS	NUT, 5/16-18, HEX, STAINLESS STEEL
20	2	V-212	SCREW, #2 X 3/16 DRIVE, TYPE U, OVAL HEAD, STAINLESS STEEL
19	1	AN-114	NAMEPLATE, BLANK, FOR VALVES WITH SPRINGS OR DETENTS
18	1	PR8	ROD - PISTON, 3/4" & 1" VALVE
17	1	V-89	O-RING, BUNA-N, 70 DURO, AS-110, (REF 3/8 X 9/16 X 3/32), 1" & 2" SUBPLATE PILOT
16	1	PBEC48	PISTON - ENDCAP, BLIND, 1/2", 3/4" & 1" VALVE
15	1	V-227	NUT, 3/8-16, HEX, PLATED
14	1	V-270	WASHER FLAT 3/8" CADMIUM PLATED FOR ALL PISTON OPERATORS
13	1	V-102	U-CUP, 3 X 2-9/16 X 7/32, NITRILE
12	1	P48-A	3" PISTON - 2 POS., 1/2", 3/4" & 1" VALVE
11	1	BRY8	BARREL, 3/4" & 1" VALVE
10	2	V-166	GASKET - PISTON BARREL, 1/2", 3/4" & 1" VALVE
9	1	PRC48	PISTON - ENDCAP, 2-POS, 1/2", 3/4" & 1" VALVE
8	1	V-74	PLUG - SPOOL, 3/4" & 1" VALVE
7	1	S8	SPOOL - STANDARD, 2 POS, CLSD CTR, 3/4" & 1" VALVE
6	1	CS8	SPRING - RETURN, 3/4" & 1" VALVES
5	1	PEC48-3	END CAP, VENTED, 380 AL, 1/2", 3/4" & 1" VALVES
4	8	V-46	SCREW, 1/4-20 X 3/4, SOCKET HEAD CAP
3	2	ECG48	GASKET - END CAP, 1/2", 3/4" & 1" VALVE
2	6	V-30	O-RING, BUNA-N, 70 DURO, AS-220, (REF 1-3/8 X 1-5/8 X 1/8), 3/4" & 1" VALVES
1	1	B8-1	BODY, 1" SIDE PORT, UPPER PILOTS, ANODIZED
FLG	QTY	PART NO	DESCRIPTION



LIMITS ON DIMENSIONS
 UNLESS OTHERWISE SPECIFIED
 2-PL DECIMAL ± .01
 3-PL DECIMAL ± .005
 FRACTIONAL ± 1/64
 ANGULAR ± 1/2°

AAA PRODUCTS INTERNATIONAL
 7114 Harry Hines Blvd
 Dallas, TX 75235

DRAWN: RMckenna	DATE: 9/27/2014	CHECKED: KWaite	DATE: 3/26/2015
SCALE: 3/4	SHEET: 1 OF 1	RELEASED: HWomack	DATE: 3/26/2015
TITLE: 1" SIDE PORT, PISTON, 2 POS, SPRING RTRN		PART NO.: 327V	REV.:

THE INFORMATION CONTAINED WITHIN THIS DOCUMENT IS PROPRIETARY TO AAA PRODUCTS AND MAY NOT BE DISCLOSED WITHOUT PRIOR WRITTEN CONSENT

D:\Engineering\product\Valves\Assemblies\Petrol System\DWG\327V.dwg