

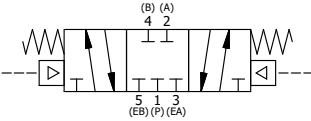
POSITION GASKET ON END OF VALVE SO MOUNTING HOLES ALIGN, BOTH ENDS (SIDE 'A' SHOWN)

Delrin Plunger - ⚠ WARNING: This product can expose you to chemicals including Formaldehyde, which is known to the State of California to cause cancer or birth defects or other reproductive harm. For more information go to www.P65Warnings.ca.gov.

PLG	QTY	PART NO	DESCRIPTION
10	2	V-212	SCREW, 2 X 3/16, DRIVE, TYPE U, OVAL HEAD, 316 SS
9	1	AN-114	NAME PLATE, BLANK, FOR VALVES WITH SPRINGS OR DETENTS.
8	1	AY-RY3	ASSY - SPR CTR, CLSD CTR SPL, PILOT, 1/4" & 3/8" VALVES
7	1	V-254	U-CUP, NITRILE, 7/8 X 1/2 X 3/16
6	1	MLP2-1	PLUNGER - LOW PRESSURE, OPERATOR
5	1	LPEC3	END CAP, PILOT, LOW PRESSURE, 380 AL, 1/4" & 3/8" VALVE
4	8	V-38	SCREW, 10-24 X 3/4, SOCKET HEAD CAP
3	2	ECG3	GASKET - END CAP, 1/4" & 3/8" VALVE
2	6	V-39	O-RING, STD BODY, VITON, 1/4" & 3/8" VALVES
1	1	B3-2E	BODY - SOLID, PLAIN, NO PILOTS, ANODIZED, 3/8" SIDE PORT VALVE

SECTION A-A
SCALE 1 : 1
VIEW FROM 3 PORT SIDE

- NOTES:
 1) ALWAYS GIVE VALVE MODEL AND PART NUMBER WHEN ORDERING PARTS.
 2) MLP2-1 SMALL DIAMETER HUB MAY NEED TO BE TRIMMED TO AVOID CONTACT WITH PLUG IN THE SPOOL. MLP2-1 MUST SIT FLUSH WITH THE SPOOL NOT THE PLUG.



LIMITS ON DIMENSIONS UNLESS OTHERWISE SPECIFIED		2-PL DECIMAL ± .01 3-PL DECIMAL ± .005 FRACTIONAL ± 1/64 ANGULAR ± 1/2°		AAA PRODUCTS INTERNATIONAL 7114 Harry Hines Blvd Dallas, TX 75235
DRAWN: RMcKenna	DATE: 9/17/2016	CHECKED: KWhite	DATE: 9/17/2016	
SCALE: 1 : 1	SHEET: 1 OF 1	RELEASED: HWomack	DATE: 9/17/2016	
TITLE: 3/8" SIDE PORT, DBL PILOT, 3 POS, SPR CTR, PILOT SHFT, CLSD CTR SPL, LOW PSI PILOT ON 14			PART NO.: 311V	REV.:

THE INFORMATION CONTAINED WITHIN THIS DOCUMENT IS PROPRIETARY TO AAA PRODUCTS AND MAY NOT BE DISCLOSED WITHOUT PRIOR WRITTEN CONSENT

D:\Engineering\Inventor Files\Internal Drawings\Valves Assembly\Pilot Special\311V.dwg