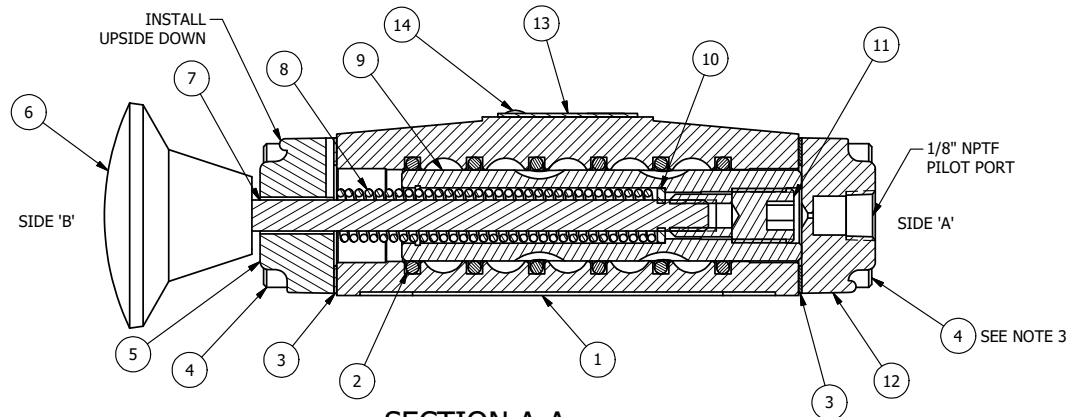


POSITION GASKET ON END OF VALVE SO MOUNTING HOLES ALIGN, BOTH ENDS (SIDE 'A' SHOWN)



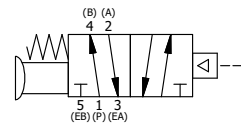
SECTION A-A
SCALE 1 : 1
VIEW FROM 3 PORT SIDE

NOTES:

- 1) ALWAYS GIVE VALVE MODEL AND PART NUMBER WHEN ORDERING PARTS.
- 2) USE GREEN LOCTITE (#290). FIRST INSTALL PIK3-2 USING GREEN LOCTITE SO 1 THREAD IS VISIBLE ON THE REVERSE SIDE, INSERT 1/16 PIPE PLUG FLUSH SIDE FIRST. THEN INSTALL 7/16 PLUG WITH GREEN LOCTITE UNTIL ALL COMPONENTS ARE LOCKED. THE PIK3-2 SHOULD NOT HAVE ANY MOVEMENT. ROLL SPOOL ON FLAT SURFACE TO MAKE SURE PIK3-2 PIN IS STILL CONCENTRIC.
- 3) APPLY ANTI-SEIZE COMPOUND LIGHTLY TO THE FIRST 1/4" OF THE SCREW THREAD. APPLICATION SHOULD BE AROUND THE THREAD OF THE SCREW.

| FLG | QTY | PART NO | DESCRIPTION |
|-----|-----|---------|---|
| 14 | 2 | V-212 | SCREW, #2 X 3/16 DRIVE, TYPE U, OVAL HEAD, STAINLESS STEEL |
| 13 | 1 | AN-106 | NAMEPLATE, BLANK, STAINLESS STEEL |
| 12 | 1 | PEC3-11 | END CAP, PILOT, STAINLESS STEEL, 1/4" & 3/8" VALVE |
| 11 | 1 | V-668 | PLUG, 7/16-20, 1/4-20 UNC INDICATOR PIN |
| 10 | 1 | V-43 | WASHER - SPRING CTR, 302/304 STAINLESS STEEL, 1/4" & 3/8" VALVES |
| 9 | 1 | SSH3-SS | SPOOL - STANDARD, 2 POS, CLSD CTR, STAINLESS, 1/4" & 3/8" VALVE |
| 8 | 1 | CS3-5 | SPRING - RETURN, STAINLESS, 1/4" & 3/8" VALVES |
| 7 | 1 | PIK3-2 | PIN, INDICATOR, THREADED, 303 STAINLESS, 1/4" & 3/8" VALVE |
| 6 | 1 | V-192 | KNOB, RED, (BRASS 1/4-20 INSERT), 1 13/16 DIA, PUSH/PULL |
| 5 | 1 | SEC3-4 | END CAP, VENTED, INDICATOR PIN, STAINLESS STEEL, 1/4" & 3/8" VALVES |
| 4 | 8 | V-500 | SCREW, 10-24 X 3/4, SOCKET HEAD CAP, STAINLESS |
| 3 | 2 | ECG3 | GASKET - END CAP, 1/4" & 3/8" VALVE |
| 2 | 6 | V-39 | O-RING, VITON, STD BODY, 1/4" & 3/8" VALVES |
| 1 | 1 | B2-2-SS | BODY - STAINLESS STEEL, PLAIN, NO PILOTS, 1/4" SIDE PORT VALVE |

| | | | | |
|---|-----------------|--|-------------------|--|
| LIMITS ON DIMENSIONS UNLESS OTHERWISE SPECIFIED | | 2-PL DECIMAL ± .01 3-PL DECIMAL ± .005 FRACTIONAL ± 1/64 ANGULAR ± 1/2° | | AAA PRODUCTS INTERNATIONAL 7114 Harry Hines Blvd Dallas, TX 75235 |
| DRAWN: HJackson | DATE: 7/23/1990 | CHECKED: KWaite | DATE: 5/27/2015 | |
| SCALE: 1 : 1 | SHEET: 1 OF 1 | RELEASED: HWomack | DATE: 5/27/2015 | |
| TITLE: 1/4" SIDE PORT, SNGL PILOT, 2 POS, SPR RTRN, PALM OVRD, RED KNOB, STAINLESS STEEL | | | PART NO.: 299V | REV.: C |



| NO. | DATE | REVISION |
|-----|-----------|---|
| C | 8/19/2020 | RPL SS-SS WITH SSH3-SS, CREATED V-668 PLUG. |
| B | 10/25/11 | REVERTED BACK TO OLD VERSION WHERE WE HAVE A SPACER INSTD OF LONGER PIK3-2. |
| A | 5/19/2009 | RPL V-20 WITH V-20-SS. |