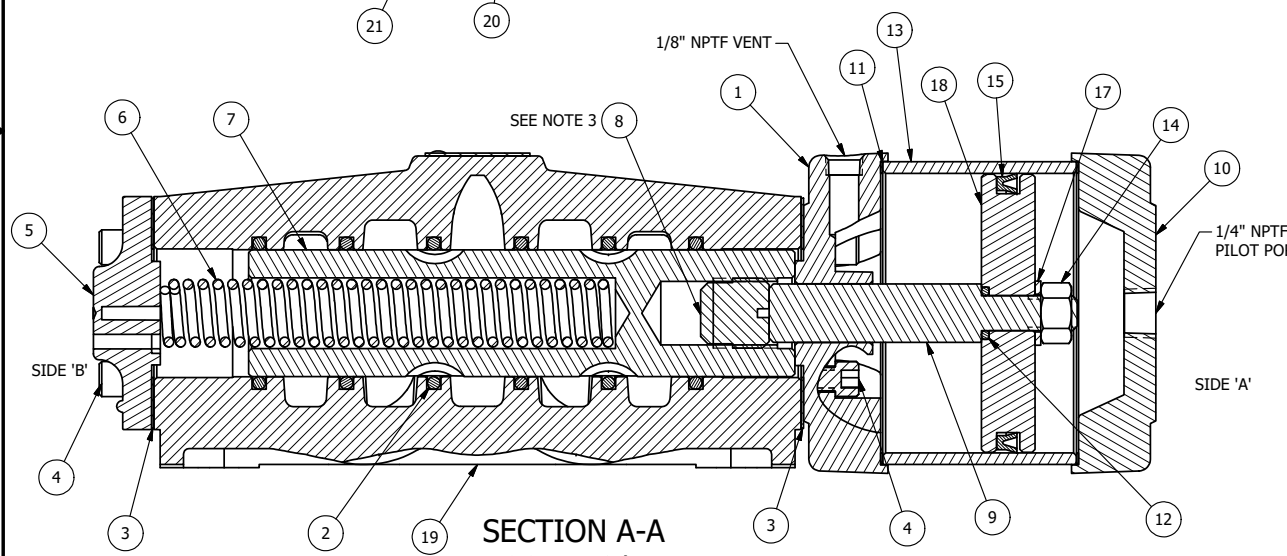
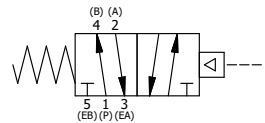


POSITION GASKET ON END OF VALVE SO GASKET SEALS PILOT HOLE, BOTH SIDES (SIDE 'A' SHOWN)



SECTION A-A
SCALE 3/4
VIEW FROM 3 PORT SIDE

- NOTES:
 1) ALWAYS GIVE VALVE MODEL AND PART NUMBER WHEN ORDERING PARTS.
 2) MINIMUM SHIFT PRESSURE OF 12 PSI ON PISTON PILOT PORTS.
 3) PLUG MUST BE BELOW FLUSH AND UP TO 0.400 DEPTH. VERIFY ASSEMBLY.



| | | | |
|-----|-----|----------|--|
| 23 | 4 | V-104-SS | STAR WASHER 5/16" STAINLESS STEEL |
| 22 | 4 | V-105-SS | NUT, 5/16-18, HEX, STAINLESS STEEL |
| 21 | 1 | AN-114 | NAMEPLATE, BLANK, FOR VALVES WITH SPRINGS OR DETENTS |
| 20 | 2 | V-212 | SCREW, #2 X 3/16 DRIVE, TYPE U, OVAL HEAD, STAINLESS STEEL |
| 19 | 1 | B8-1 | BODY, 1" SIDE PORT, UPPER PILOTS, ANODIZED |
| 18 | 1 | P48-A | 3" PISTON - 2 POS., 1/2", 3/4" & 1" VALVE |
| 17 | 1 | V-270 | WASHER FLAT 3/8" CADMIUM PLATED FOR ALL PISTON OPERATORS |
| 16 | 4 | V-58 | SCREW, 5/16-18 X 3-1/4, HEX HEAD, PLATED |
| 15 | 1 | V-102 | U-CUP, 3 X 2-9/16 X 7/32, NITRILE |
| 14 | 1 | V-227 | NUT, 3/8-16, HEX, PLATED |
| 13 | 1 | BRY8 | BARREL, 3/4" & 1" VALVE |
| 12 | 1 | V-89 | O-RING, BUNA-N, 70 DURO, AS-110, (REF 3/8 X 9/16 X 3/32), 1" & 2" SUBPLATE PILOT |
| 11 | 2 | V-166 | GASKET - PISTON BARREL, 1/2", 3/4" & 1" VALVE |
| 10 | 1 | PBEC48 | PISTON - ENDCAP, BLIND, 1/2", 3/4" & 1" VALVE |
| 9 | 1 | PR8 | ROD - PISTON, 3/4" & 1" VALVE |
| 8 | 1 | V-74 | PLUG - SPOOL, 3/4" & 1" VALVE |
| 7 | 1 | S8 | SPOOL - STANDARD, 2 POS, CLSD CTR, 3/4" & 1" VALVE |
| 6 | 1 | CS8 | SPRING - RETURN, 3/4" & 1" VALVES |
| 5 | 1 | PEC48-3 | END CAP, VENTED, 380 AL, 1/2", 3/4" & 1" VALVES |
| 4 | 8 | V-46 | SCREW, 1/4-20 X 3/4, SOCKET HEAD CAP |
| 3 | 2 | ECG48 | GASKET - END CAP, 1/2", 3/4" & 1" VALVE |
| 2 | 6 | V-30 | O-RING, BUNA-N, 70 DURO, AS-220, (REF 1-3/8 X 1-5/8 X 1/8), 3/4" & 1" VALVES |
| 1 | 1 | PRC48-1 | PISTON - ENDCAP, 2-POS, TAPPED VENT, 1/2", 3/4" & 1" VALVE |
| FLG | QTY | PART NO | DESCRIPTION |

| | | | | |
|--|----------------|--|--------------------------|--|
| LIMITS ON DIMENSIONS UNLESS OTHERWISE SPECIFIED | | 2-PL DECIMAL ± .01 3-PL DECIMAL ± .005 FRACTIONAL ± 1/64 ANGULAR ± 1/2° | | AAA PRODUCTS INTERNATIONAL 7114 Harry Hines Blvd Dallas, TX 75235 |
| DRAWN: RMckenna | DATE: 2/9/2018 | CHECKED: KWaite | DATE: 2/9/2018 | |
| SCALE: 3/4 | SHEET: 1 OF 1 | RELEASED: HWomack | DATE: 2/9/2018 | |
| TITLE: 1" SIDE PORT, PISTON, 2 POS, SPRING RTRN, TAPPED VENT | | | PART NO.: 290V | REV.: |

THE INFORMATION CONTAINED WITHIN THIS DOCUMENT IS PROPRIETARY TO AAA PRODUCTS AND MAY NOT BE DISCLOSED WITHOUT PRIOR WRITTEN CONSENT

D:\Engineering\product\Valves\Assembly\Petrol System\DWG\290V.dwg