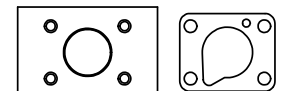


SECTION A-A
SCALE 1 : 1
VIEW FROM 3 PORT SIDE



POSITION GASKET ON END OF VALVE SO MOUNTING HOLES ALIGN, BOTH ENDS (SIDE 'A' SHOWN)

- NOTES:
 1) ALWAYS GIVE VALVE MODEL AND PART NUMBER WHEN ORDERING PARTS.
 2) PLACE PRC3 VENT HOLE DOWN.
 3) MINIMUM SHIFT PRESSURE OF 12 PSI ON PISTON PILOT PORTS.

22	4	V-103	SCREW, 5/16-18 X 2-1/2, HEX HD. PLATED
21	4	V-104-SS	STAR WASHER 5/16" STAINLESS STEEL.
20	4	V-105-SS	NUT, 5/16-18, HEX, STAINLESS STEEL
19	2	V-212	SCREW, #2 X 3/16 DRIVE, TYPE U, OVAL HEAD, STAINLESS STEEL
18	1	AN-114	NAMEPLATE, BLANK, FOR VALVES WITH SPRINGS OR DETENTS
17	1	PR34	ROD - PISTON, 1/4", 3/8" & 1/2" VALVE
16	1	V-89	O-RING, BUNA-N, 70 DURO, AS-110, (REF 3/8 X 9/16 X 3/32), 1" & 2" SUBPLATE PILOT
15	1	PBEC3	PISTON - ENCAP, BLIND, 1/4" & 3/8" VALVE
14	1	V-227	NUT, 3/8-16, HEX, PLATED
13	1	V-270	WASHER FLAT 3/8" CADMIUM PLATED FOR ALL PISTON OPERATORS
12	1	V-115	U-CUP, 2-1/2 X 2-1/8 X 3/16, NITRILE
11	1	P3-A	2 1/2" PISTON - 2 POS., 1/4" & 3/8" VALVE
10	1	BR3	BARREL, 1/4" & 3/8" PISTON VALVE
9	2	V-165	GASKET - PISTON BARREL, 1/4" & 3/8" VALVE
8	1	PRC3	ENDCAP, 1/4 & 3/8" FOR ROD END PISTON OPER. --FINISHED--
7	1	S3	SPOOL - STANDARD, 2 POS, CLSD CTR, 1/4" & 3/8" VALVE
6	1	CS3	SPRING - RETURN, (EXCEPT HO, KO & PO) 1/4" & 3/8" VALVES
5	1	SEC3-A	END CAP, VENTED, SPRING BOSS, 380 AL, 1/4" & 3/8" VALVE
4	8	V-38	SCREW, 10-24 X 3/4, SOCKET HEAD CAP
3	2	ECG3	GASKET - END CAP, 1/4" & 3/8" VALVE
2	6	V-39	O-RING, VITON, STD BODY, 1/4" & 3/8" VALVES
1	1	B2-2E	BODY - SOLID, PLAIN, NO PILOTS, ANODIZED, 1/4" SIDE PORT VALVE
FLG	QTY	PART NO	DESCRIPTION

LIMITS ON DIMENSIONS
 UNLESS OTHERWISE SPECIFIED
 2-PL DECIMAL ± .01
 3-PL DECIMAL ± .005
 FRACTIONAL ± 1/64
 ANGULAR ± 1/2°

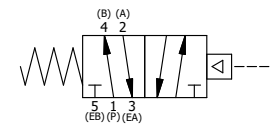
AAA PRODUCTS INTERNATIONAL
 PRODUCTS INTERNATIONAL
 7114 Harry Hines Blvd
 Dallas, TX 75235

DRAWN: RMckenna DATE: 3/27/2017 CHECKED: KWaite DATE: 3/27/2017
 SCALE: 1 : 1 SHEET: 1 OF 1 RELEASED: HWomack DATE: 3/27/2017

TITLE:
**1/4" SIDE PORT, PISTON, 2 POS,
 SPRING RTRN, HALF PSI SHFT**

PART NO.:
284V

REV.:



THE INFORMATION CONTAINED WITHIN THIS DOCUMENT IS PROPRIETARY TO AAA PRODUCTS AND MAY NOT BE DISCLOSED WITHOUT PRIOR WRITTEN CONSENT