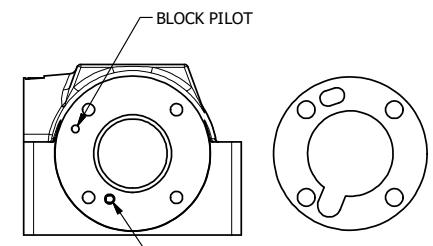
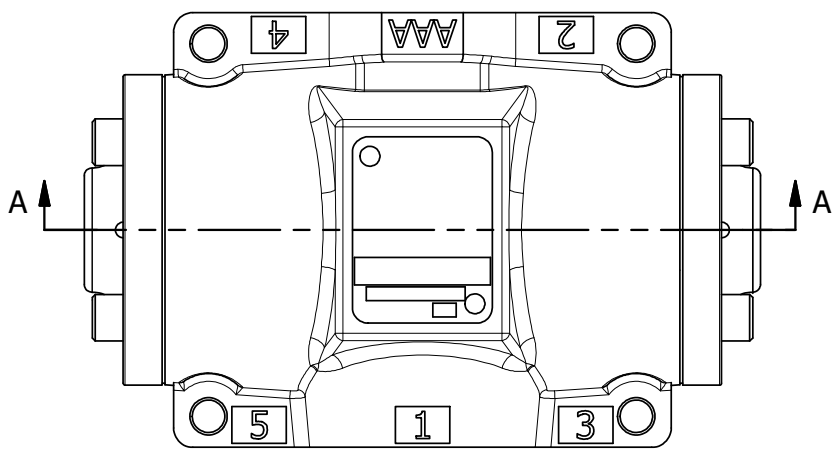
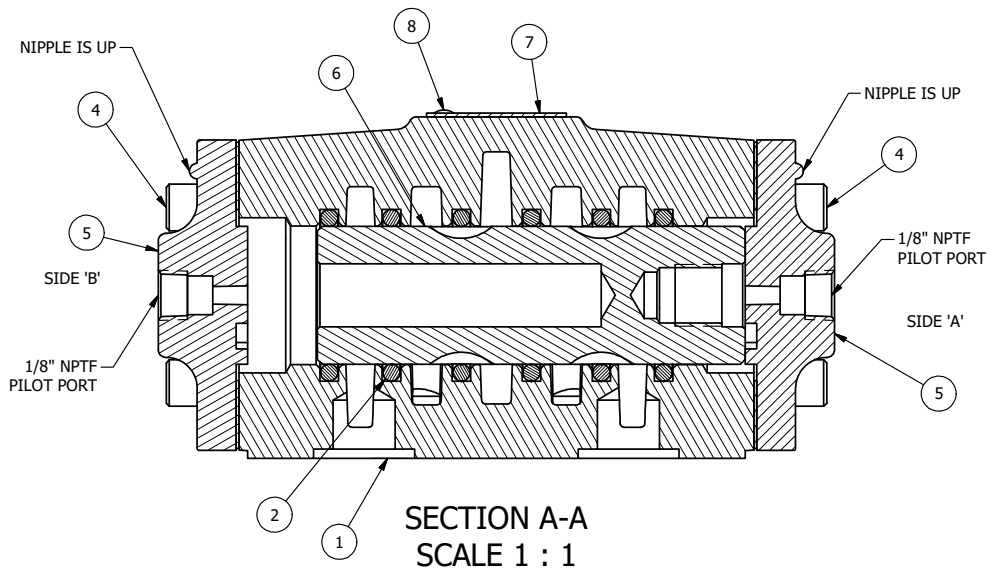


4 | 3 | 2 | 1



ALIGN PILOT WITH CUT-OUT
 POSITION GASKET ON END OF VALVE SO
 GASKET SEALS UPPER PILOT HOLE,
 AND LOWER PILOT VENTS TO END CAP
 BOTH SIDES (SIDE 'A' SHOWN)

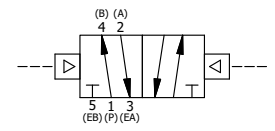
- NOTES:
 1) ALWAYS GIVE VALVE MODEL AND PART NUMBER WHEN ORDERING PARTS.
 2) BP4-4 BODY IS CRITICAL.
 3) DP48 ENDCAP AND ORIENTATION IS CRITICAL.



SECTION A-A
 SCALE 1 : 1

FLG	QTY	PART NO	DESCRIPTION
9	1	SPK-4	KIT - SUBPLATE MOUNT, 1/2" SUBPLATE VALVES
8	2	V-212	SCREW, 2 X 3/16, DRIVE, TYPE U, OVAL HEAD, 316 SS
7	1	AN-115	BLANK NAMEPLATE FOR HE,KE,KD,RR,D,CR,PP,SR,SS VALVES.
6	1	S4	SPOOL - STANDARD, 2 POS, CLSD CTR, 1/2" VALVE
5	2	DP48	ENDCAP - DP48, DIFFERENTIAL PILOT, 380 AL, 1/2", 3/4" & 1" VALVES
4	8	V-46	SCREW, 1/4-20 X 3/4, SOCKET HEAD CAP
3	2	ECG48	GASKET - END CAP, 1/2", 3/4" & 1" VALVE
2	6	V-87	O-RING, VITON, 75 DURO, AS-216, (REF 1-1/8 X 1-3/8 X 1/8), 1/2" VALVES, 1" SUBPLATE
1	1	BP4-4	BODY, 1/2" SUBPLATE, LOWER & UPPER PILOT

LIMITS ON DIMENSIONS UNLESS OTHERWISE SPECIFIED		2-PL DECIMAL ± .01 3-PL DECIMAL ± .005 FRACTIONAL ± 1/64 ANGULAR ± 1/2°		AAA PRODUCTS INTERNATIONAL 7114 Harry Hines Blvd Dallas, TX 75235
DRAWN: RMcKenna	DATE: 7/27/2014	CHECKED: KWaitte	DATE: 3/26/2015	
SCALE: 1 : 1	SHEET: 1 OF 1	RELEASED: HWomack	DATE: 3/26/2015	
TITLE: 1/2" SUBPLATE, DBL PILOT, 2 POS, FRICTION POS, PILOT RTRN, VITON BODY O-RINGS			PART NO.: 276V	REV.:



4 | 3 | 2

THE INFORMATION CONTAINED WITHIN THIS DOCUMENT IS PROPRIETARY TO AAA PRODUCTS AND MAY NOT BE DISCLOSED WITHOUT PRIOR WRITTEN CONSENT

D:\Engineering\Inventor Files\Internal Drawings\Valves Assembly\PILOT\Special\276V.dwg