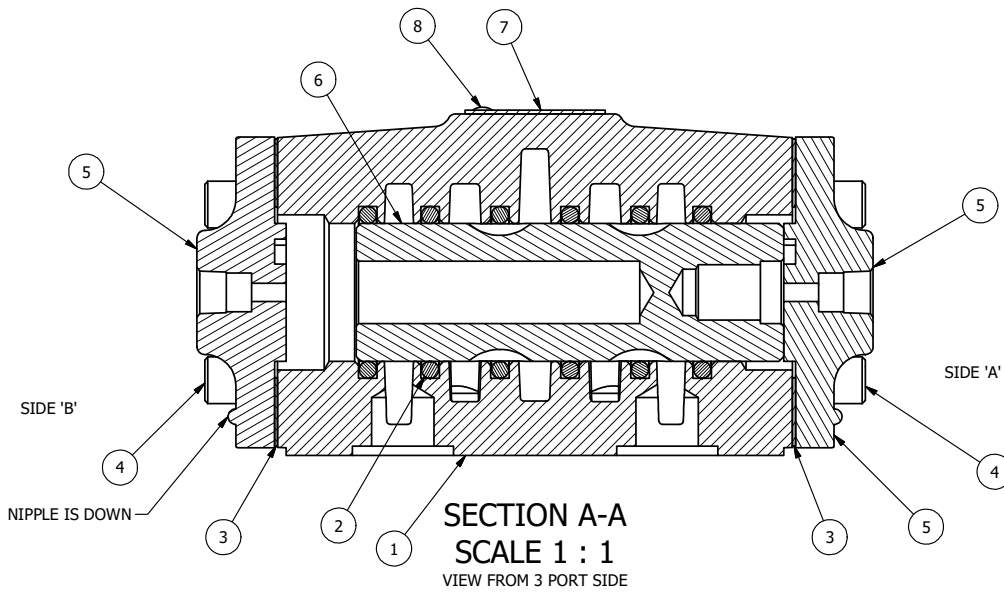


ALIGN PILOT AND HOLE IN GASKET
BOTH SIDES (SIDE 'A' SHOWN)

NOTES:

- 1) ALWAYS GIVE VALVE MODEL AND PART NUMBER WHEN ORDERING PARTS.
- 2) BP4-4 BODY IS CRITICAL.
- 3) DP48 ENDCAP AND ORIENTATION IS CRITICAL.



| | | | |
|-----|-----|---------|---|
| 9 | 1 | SPK-4 | KIT - SUBPLATE MOUNT, 1/2" SUBPLATE VALVES |
| 8 | 2 | V-212 | SCREW, 2 X 3/16, DRIVE, TYPE U, OVAL HEAD, 316 SS |
| 7 | 1 | AN-115 | BLANK NAMEPLATE FOR HE,KE,KD,RR,D,CR,PP,SR,SS VALVES. |
| 6 | 1 | S4 | SPOOL - STANDARD, 2 POS, CLSD CTR, 1/2" VALVE |
| 5 | 2 | DP48 | ENDCAP - DP48, DIFFERENTIAL PILOT, 380 AL, 1/2", 3/4" & 1" VALVES |
| 4 | 8 | V-46 | SCREW, 1/4-20 X 3/4, SOCKET HEAD CAP |
| 3 | 2 | ECG48-3 | GASKET - END CAP, BUTTON BLEEDER, 1/2", 3/4" & 1" VALVE |
| 2 | 6 | V-87 | O-RING, VITON, 75 DURO, AS-216, (REF 1-1/8 X 1-3/8 X 1/8), 1/2" VALVES, 1" SUBPLATE |
| 1 | 1 | BP4-4 | BODY, 1/2" SUBPLATE, LOWER & UPPER PILOT |
| FLG | QTY | PART NO | DESCRIPTION |

LIMITS ON DIMENSIONS
UNLESS OTHERWISE SPECIFIED

2-PL DECIMAL ± .01
3-PL DECIMAL ± .005
FRACTIONAL ± 1/64
ANGULAR ± 1/2°

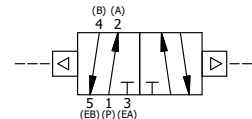


DRAWN: RMckenna DATE: 11/3/2016

CHECKED: KWaitte DATE: 11/3/2016
RELEASED: HWomack DATE: 11/3/2016

TITLE:
1/2" SUBPLATE, DIFF PILOT, 2 POS,
FRICTION POS, DIFF PILOT RTRN,
LESS BUTTON BLEEDERS

PART NO.:
275V
REV.:
A



| NO. | DATE | REVISION |
|-----|-----------|----------------------------|
| A | 3/14/2019 | CHANGED GASKET TO ECG48-3. |