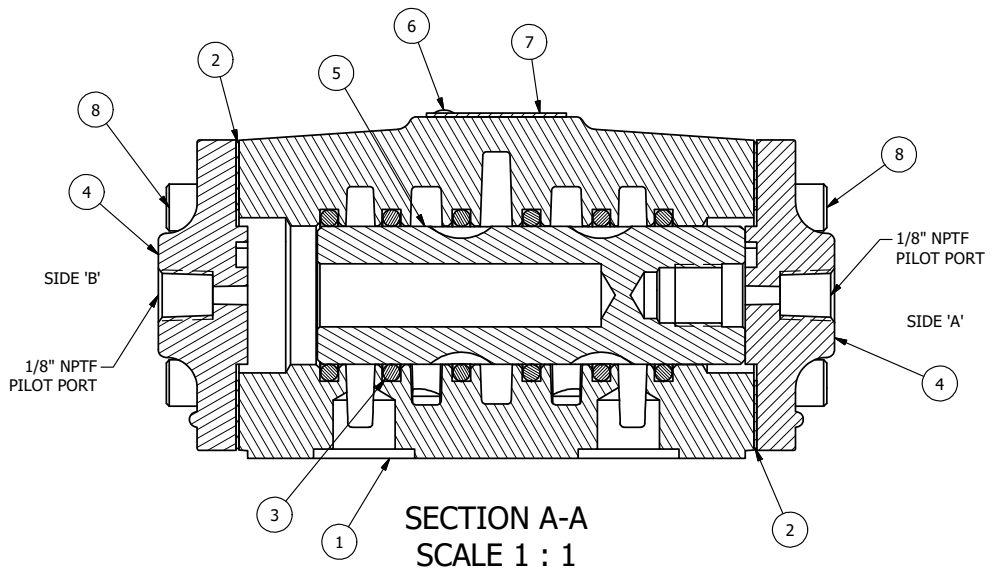
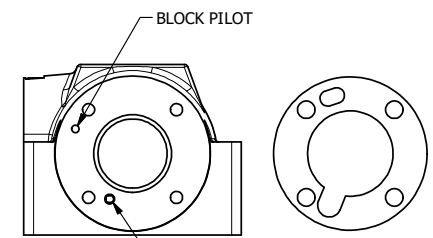
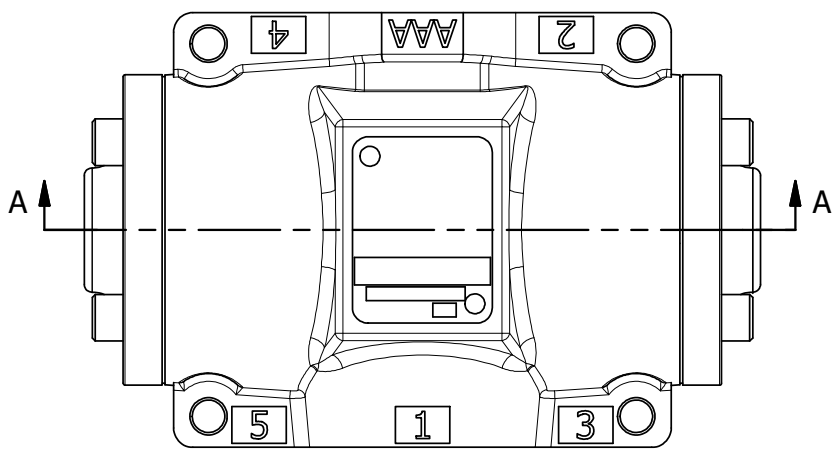


4 | 3 | 2 | 1

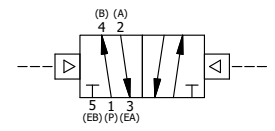


SECTION A-A
SCALE 1 : 1

NOTES:
1) ALWAYS GIVE VALVE MODEL AND PART NUMBER WHEN ORDERING PARTS.

PLG	QTY	PART NO	DESCRIPTION
9	1	SPK-4	KIT - SUBPLATE MOUNT, 1/2" SUBPLATE VALVES
8	8	V-46	SCREW, 1/4-20 X 3/4, SOCKET HEAD CAP
7	1	AN-115	BLANK NAMEPLATE FOR HE,KE,KD,RR,D,CR,PP,SR,SS VALVES.
6	2	V-212	SCREW, 2 X 3/16, DRIVE, TYPE U, OVAL HEAD, 316 SS
5	1	S4	SPOOL - STANDARD, 2 POS, CLSD CTR, 1/2" VALVE
4	2	PEC48	END CAP, PILOT, 380 AL, 1/2", 3/4" & 1" VALVES
3	6	V-6	O-RING, BUNA-N, 70 DURO, AS-216, (REF 1-1/8 X 1-3/8 X 1/8), 1/2" VALVES, 1" SUBPLATE
2	2	ECG48-1	GASKET - END CAP, LOWER PILOT, 1/2", 3/4" & 1" VALVE
1	1	BP4-1-456V	BODY, 1/2" SUBPLATE, UPPER PILOT, CUSTOM SIDE PORTS

LIMITS ON DIMENSIONS UNLESS OTHERWISE SPECIFIED		2-PL DECIMAL ± .01 3-PL DECIMAL ± .005 FRACTIONAL ± 1/64 ANGULAR ± 1/2°		AAA PRODUCTS INTERNATIONAL 7114 Harry Hines Blvd Dallas, TX 75235
DRAWN: RMcKenna	DATE: 2/9/2018	CHECKED: KWhite	DATE: 2/9/2018	
SCALE: 1 : 1	SHEET: 1 OF 1	RELEASED: HWomack	DATE: 2/9/2018	
TITLE: 1/2" SUBPLATE, DBL PILOT, 2 POS, FRICTION POS, PILOT RTRN, 1/2" SIDE PORTS 1 & 3 & 5			PART NO.: 264V	REV.:



4 | 3 | 2

THE INFORMATION CONTAINED WITHIN THIS DOCUMENT IS PROPRIETARY TO AAA PRODUCTS AND MAY NOT BE DISCLOSED WITHOUT PRIOR WRITTEN CONSENT

D:\Engineering\Inventor Files\Internal Drawings\Valves\Assembly\1/2"Sub\Special\264V.dwg