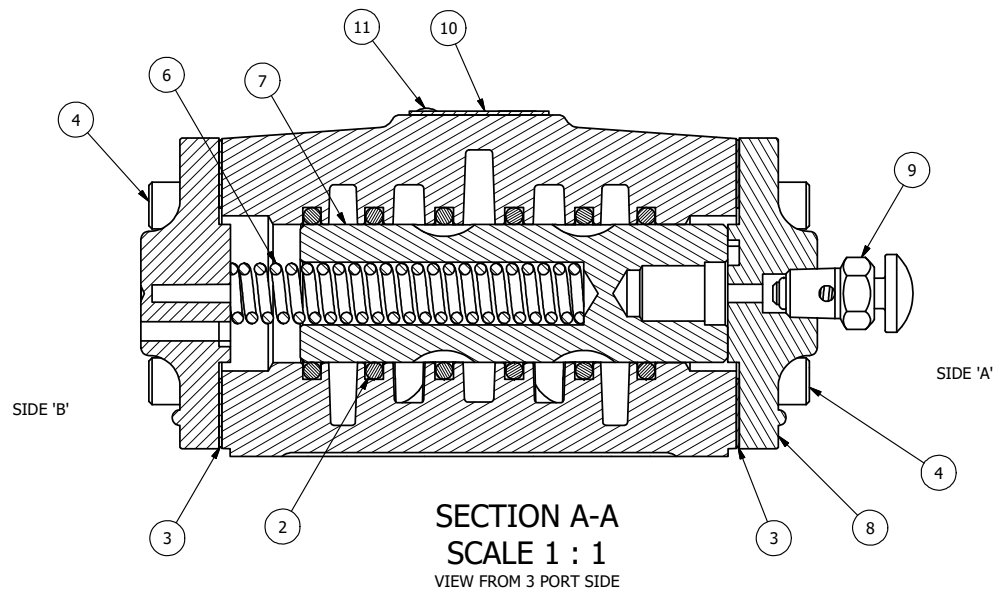


POSITION GASKET TO SEAL PILOT HOLE
SIDE 'B' ONLY.

ALIGN PILOT AND HOLE IN GASKET
SIDE 'A' ONLY

NOTES:

1) ALWAYS GIVE VALVE MODEL AND PART NUMBER WHEN ORDERING PARTS.



11	2	V-212	SCREW, 2 X 3/16, DRIVE, TYPE U, OVAL HEAD, 316 SS
10	1	AN-106	316 SS NAMEPLATE BLANK
9	1	BB-1SSL	COMPLETE BUTTON BLEEDER ASSY W/LARGE HEAD S/S PLUNGER
8	1	DP48-EN	ENDCAP - ELECTROLESS NICKEL PLATED, DIFFERENTIAL PILOT, 1/2" & 3/4" & 1"
7	1	S4	SPOOL - STANDARD, 2 POS, CLSD CTR, 1/2" VALVE
6	1	SW12199	SPRING - RETURN, 80 PSI, 1/2" VALVES
5	1	PEC48-3-EN	END CAP, ELECTROLESS NICKEL PLATED 1/2", 3/4" & 1" VENTED
4	8	V-46-SS	SCREW, 1/4-20 X 3/4, SOCKET HEAD CAP, 18-8 SS
3	2	ECG48-3	GASKET - END CAP, BUTTON BLEEDER, 1/2", 3/4" & 1" VALVE
2	6	V-87	O-RING, VITON, 75 DURO, AS-216, (REF 1-1/8 X 1-3/8 X 1/8), 1/2" VALVES, 1" SUBPLATE
1	1	B4-1-TC	BODY, 1/2" SIDE PORT, UPPER PILOTS, TUFRAM
FLG	QTY	PART NO	DESCRIPTION

LIMITS ON DIMENSIONS
UNLESS OTHERWISE SPECIFIED

2-PL DECIMAL ± .01
3-PL DECIMAL ± .005
FRACTIONAL ± 1/64
ANGULAR ± 1/2°



DRAWN: RMcKenna DATE: 3/9/2011

CHECKED: KWaitte DATE: 5/27/2015
SCALE: None SHEET: 1 OF 1
RELEASED: HWomack DATE: 5/27/2015

TITLE:
1/2" SIDE PORT, DIFF PILOT, 2 POS,
SPRING RTRN, TUFRAM,
VITON BODY O-RINGS

PART NO.:
221V
REV.:
A

NO.	DATE	REVISION
A	3/14/2019	CHANGED GASKET TO ECG48-3.

THE INFORMATION CONTAINED WITHIN THIS DOCUMENT IS PROPRIETARY TO AAA PRODUCTS AND MAY NOT BE DISCLOSED WITHOUT PRIOR WRITTEN CONSENT

D:\Engineering\Inventor Files\Internal Drawings\Assemblies\Diff Pilot\Special\221V.dwg