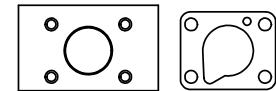


SECTION A-A  
SCALE 1 : 1  
VIEW FROM 3 PORT SIDE



POSITION GASKET ON END OF VALVE SO MOUNTING HOLES ALIGN, BOTH ENDS (SIDE 'A' SHOWN)

NOTES:

- 1) ALWAYS GIVE VALVE MODEL AND PART NUMBER WHEN ORDERING PARTS.
- 2) MINIMUM SHIFT PRESSURE OF 12 PSI ON PISTON PILOT PORTS.

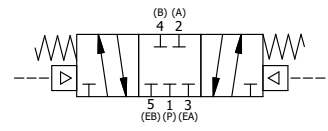
FLG	QTY	PART NO	DESCRIPTION
20	4	V-242	SCREW, 5/16-18 X 3, HEX HEAD, PLATED
19	4	V-104-SS	STAR WASHER 5/16" STAINLESS STEEL
18	4	V-105-SS	NUT, 5/16-18, HEX, STAINLESS STEEL
17	2	V-212	SCREW, #2 X 3/16 DRIVE, TYPE U, OVAL HEAD, STAINLESS STEEL
16	1	AN-114	NAMEPLATE, BLANK, FOR VALVES WITH SPRINGS OR DETENTS
15	1	V-89	O-RING, BUNA-N, 70 DURO, AS-110, (REF 3/8 X 9/16 X 3/32), 1" & 2" SUBPLATE PILOT
14	1	PBEC3	PISTON - ENCAP, BLIND, 1/4" & 3/8" VALVE
13	1	V-227	NUT, 3/8-16, HEX, PLATED
12	1	V-270	WASHER FLAT 3/8" CADMIUM PLATED FOR ALL PISTON OPERATORS
11	2	V-115	U-CUP, 2-1/2 X 2-1/8 X 3/16, NITRILE
10	1	YP3-A	2 1/2" PISTON - 2 POS., 1/4" & 3/8" VALVE
9	1	BRY3-1	BARREL, SPR CTR, 1/4" & 3/8" PISTON VALVE
8	2	V-165	GASKET - PISTON BARREL, 1/4" & 3/8" VALVE
7	1	PRCY3	PISTON - 3 POS., ROD END, 1/4" & 3/8" VALVE
6	1	V-110	O-RING, BUNA-N, 70 DURO, AS-114, (REF 5/8 X 13/16 X 3/32), 1/4" SLEEVE, 1/2" SUB, STACK
5	1	AY-PY3	SPRING CENTER SPOOL ASSY, PISTON OPERATOR, 1/4" & 3/8" VALVES
4	8	V-38	SCREW, 10-24 X 3/4, SOCKET HEAD CAP
3	2	ECG3	GASKET - END CAP, 1/4" & 3/8" VALVE
2	6	V-39	O-RING, VITON, STD BODY, 1/4" & 3/8" VALVES
1	1	B2-2E	BODY - SOLID, PLAIN, NO PILOTS, ANODIZED, 1/4" SIDE PORT VALVE
FLG	QTY	PART NO	DESCRIPTION

LIMITS ON DIMENSIONS  
UNLESS OTHERWISE SPECIFIED  
2-PL DECIMAL ± .01  
3-PL DECIMAL ± .005  
FRACTIONAL ± 1/64  
ANGULAR ± 1/2°

**AAA PRODUCTS INTERNATIONAL**  
7114 Harry Hines Blvd  
Dallas, TX 75235

DRAWN: RHuffstetter DATE: 7/14/1999 CHECKED: KWaite DATE: 3/26/2015  
SCALE: 1 : 1 SHEET: 1 OF 1 RELEASED: HWomack DATE: 3/26/2015

TITLE: <b>1/4" SIDE PORT, PISTON, 3 POS, SPR CTR, PISTON SHFT, CLSD CTR SPL</b>	PART NO.: <b>PY2</b>	REV.: <b>A</b>
--	-------------------------	-------------------



A	4/19/99	REDRAWN AND CONV TO CAD.
NO.	DATE	REVISION

THE INFORMATION CONTAINED WITHIN THIS DOCUMENT IS PROPRIETARY TO AAA PRODUCTS AND MAY NOT BE DISCLOSED WITHOUT PRIOR WRITTEN CONSENT