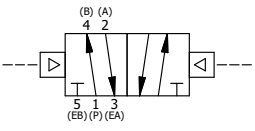


POSITION GASKET ON END OF VALVE SO GASKET SEALS PILOT HOLE, BOTH SIDES (SIDE 'A' SHOWN)

FLG	QTY	PART NO	DESCRIPTION
22	4	V-58	SCREW, 5/16-18 X 3-1/4, HEX HEAD, PLATED
21	4	V-104-SS	STAR WASHER 5/16" STAINLESS STEEL
20	4	V-105-SS	NUT, 5/16-18, HEX, STAINLESS STEEL
19	2	V-212	SCREW, #2 X 3/16 DRIVE, TYPE U, OVAL HEAD, STAINLESS STEEL
18	1	AN-115	NAMEPLATE, BLANK, FOR HE,KE,RR,D,CR,PP,SR,SS VALVES
17	1	AY-PYS8	PISTON OPERATOR, LINKAGE ASSEMBLY, 3/4" & 1" VALVES
16	1	V-89	O-RING, BUNA-N, 70 DURO, AS-110, (REF 3/8 X 9/16 X 3/32), 1" & 2" SUBPLATE PILOT
15	1	PBEC48	PISTON - ENDCAP, BLIND, 1/2", 3/4" & 1" VALVE
14	1	V-227	NUT, 3/8-16, HEX, PLATED
13	1	V-270	WASHER FLAT 3/8" CADMIUM PLATED FOR ALL PISTON OPERATORS
12	2	V-102	U-CUP, 3 X 2-9/16 X 7/32, NITRILE
11	1	YP48-A	3" PISTON - 3 POS., 1/2", 3/4" & 1" VALVE
10	1	BRY8	BARREL, 3/4" & 1" VALVE
9	2	V-166	GASKET - PISTON BARREL, 1/2", 3/4" & 1" VALVE
8	1	PRCY48	PISTON - ENDCAP, 3-POS., 1/2", 3/4" & 1" VALVE
7	1	S8	SPOOL - STANDARD, 2 POS, CLSD CTR, 3/4" & 1" VALVE
6	1	V-110	O-RING, BUNA-N, 70 DURO, AS-114, (REF 5/8 X 13/16 X 3/32), 1/4" SLEEVE, 1/2" SUB, STACK
5	1	PEC48-3	END CAP, VENTED, 380 AL, 1/2", 3/4" & 1" VALVES
4	8	V-46	SCREW, 1/4-20 X 3/4, SOCKET HEAD CAP
3	2	ECG48	GASKET - END CAP, 1/2", 3/4" & 1" VALVE
2	6	V-30	O-RING, BUNA-N, 70 DURO, AS-220, (REF 1-3/8 X 1-5/8 X 1/8), 3/4" & 1" VALVES
1	1	B6-1	BODY, 3/4" SIDE PORT, UPPER PILOTS, ANODIZED
FLG	QTY	PART NO	DESCRIPTION

SECTION A-A
SCALE 3/4
VIEW FROM 3 PORT SIDE

- NOTES:
 1) ALWAYS GIVE VALVE MODEL AND PART NUMBER WHEN ORDERING PARTS.
 2) INSERT AY-PYS8 LINKAGE ASSEMBLY INTO S8 SPOOL TO A GAP OF 1/16.
 3) MINIMUM SHIFT PRESSURE OF 7 PSI ON PISTON PILOT PORTS.



LIMITS ON DIMENSIONS UNLESS OTHERWISE SPECIFIED		2-PL DECIMAL ± .01 3-PL DECIMAL ± .005 FRACTIONAL ± 1/64 ANGULAR ± 1/2°		<p>AAA PRODUCTS INTERNATIONAL 7114 Harry Hines Blvd Dallas, TX 75235</p>
DRAWN: RHuffstetter	DATE: 8/1/2001	CHECKED: KWaite	DATE: 3/26/2015	
SCALE: 3/4	SHEET: 1 OF 1	RELEASED: HWomack	DATE: 3/26/2015	
TITLE: 3/4" SIDE PORT, PISTON, 2 POS, FRICTION POS, PISTON RTRN			PART NO.: PP6	REV.:

THE INFORMATION CONTAINED WITHIN THIS DOCUMENT IS PROPRIETARY TO AAA PRODUCTS AND MAY NOT BE DISCLOSED WITHOUT PRIOR WRITTEN CONSENT