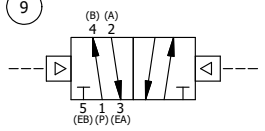


POSITION GASKET ON END OF VALVE SO GASKET SEALS PILOT HOLE, BOTH SIDES (SIDE 'A' SHOWN)

- NOTES:  
 1) ALWAYS GIVE VALVE MODEL AND PART NUMBER WHEN ORDERING PARTS.  
 2) INSERT AY-PYS4 LINKAGE ASSEMBLY INTO S4 SPOOL TO A GAP OF 1/16.  
 3) MINIMUM SHIFT PRESSURE OF 7 PSI ON PISTON PILOT PORTS.

23	1	SPK-4	KIT - SUBPLATE MOUNT, 1/2" SUBPLATE VALVES
22	4	V-58	SCREW, 5/16-18 X 3-1/4, HEX HEAD, PLATED
21	4	V-104-SS	STAR WASHER 5/16" STAINLESS STEEL
20	4	V-105-SS	NUT, 5/16-18, HEX, STAINLESS STEEL
19	2	V-212	SCREW, #2 X 3/16 DRIVE, TYPE U, OVAL HEAD, STAINLESS STEEL
18	1	AN-115	NAMEPLATE, BLANK, FOR HE,KE,RR,D,CR,PP,SR,SS VALVES
17	1	AY-PYS4	PISTON OPERATOR, LINKAGE ASSEMBLY, 1/2" VALVES
16	1	V-89	O-RING, BUNA-N, 70 DURO, AS-110, (REF 3/8 X 9/16 X 3/32), 1" & 2" SUBPLATE PILOT
15	1	PBEC48	PISTON - ENDCAP, BLIND, 1/2", 3/4" & 1" VALVE
14	1	V-227	NUT, 3/8-16, HEX, PLATED
13	1	V-270	WASHER FLAT 3/8" CADMIUM PLATED FOR ALL PISTON OPERATORS
12	2	V-102	U-CUP, 3 X 2-9/16 X 7/32, NITRILE
11	1	YP48-A	3" PISTON - 3 POS., 1/2", 3/4" & 1" VALVE
10	1	BRY8	BARREL, 3/4" & 1" VALVE
9	2	V-166	GASKET - PISTON BARREL, 1/2", 3/4" & 1" VALVE
8	1	PRCY48	PISTON - ENDCAP, 3-POS., 1/2", 3/4" & 1" VALVE
7	1	S4	SPOOL - STANDARD, 2 POS, CLSD CTR, 1/2" VALVE
6	1	V-110	O-RING, BUNA-N, 70 DURO, AS-114, (REF 5/8 X 13/16 X 3/32), 1/4" SLEEVE, 1/2" SUB, STACK
5	1	PEC48-3	END CAP, VENTED, 380 AL, 1/2", 3/4" & 1" VALVES
4	8	V-46	SCREW, 1/4-20 X 3/4, SOCKET HEAD CAP
3	2	ECG48	GASKET - END CAP, 1/2", 3/4" & 1" VALVE
2	6	V-6	O-RING, BUNA-N, 70 DURO, AS-216, (REF 1-1/8 X 1-3/8 X 1/8), 1/2" VALVES, 1" SUBPLATE
1	1	BP4-1	BODY, 1/2" SUBPLATE, UPPER PILOTS, ANODIZED
FLG	QTY	PART NO	DESCRIPTION

SECTION A-A  
 SCALE 1 : 1  
 VIEW FROM 3 PORT SIDE



LIMITS ON DIMENSIONS UNLESS OTHERWISE SPECIFIED		2-PL DECIMAL ± .01 3-PL DECIMAL ± .005 FRACTIONAL ± 1/64 ANGULAR ± 1/2°		<b>AAA PRODUCTS INTERNATIONAL</b> 7114 Harry Hines Blvd Dallas, TX 75235
DRAWN: RMckenna	DATE: 11/18/2009	CHECKED: KWaite	DATE: 3/26/2015	
SCALE: 1 : 1	SHEET: 1 OF 1	RELEASED: HWomack	DATE: 3/26/2015	
TITLE: 1/2" SUBPLATE, PISTON, 2 POS, FRICTION POS, PISTON RTRN		PART NO.:	REV.:	
		PP4P	A	

A	NO.	DATE	REVISION
	1	4/9/2014	REPLACED O-RING TO U-CUP ON PISTON ROD.

THE INFORMATION CONTAINED WITHIN THIS DOCUMENT IS PROPRIETARY TO AAA PRODUCTS AND MAY NOT BE DISCLOSED WITHOUT PRIOR WRITTEN CONSENT