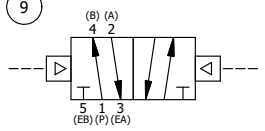


POSITION GASKET ON END OF VALVE SO GASKET SEALS PILOT HOLE, BOTH SIDES (SIDE 'A' SHOWN)

- NOTES:
 1) ALWAYS GIVE VALVE MODEL AND PART NUMBER WHEN ORDERING PARTS.
 2) INSERT AY-PYS4 LINKAGE ASSEMBLY INTO S4 SPOOL TO A GAP OF 1/16.
 3) MINIMUM SHIFT PRESSURE OF 7 PSI ON PISTON PILOT PORTS.

| FLG | QTY | PART NO | DESCRIPTION |
|-----|-----|----------|---|
| 22 | 4 | V-58 | SCREW, 5/16-18 X 3-1/4, HEX HEAD, PLATED |
| 21 | 4 | V-104-SS | STAR WASHER 5/16" STAINLESS STEEL |
| 20 | 4 | V-105-SS | NUT, 5/16-18, HEX, STAINLESS STEEL |
| 19 | 2 | V-212 | SCREW, #2 X 3/16 DRIVE, TYPE U, OVAL HEAD, STAINLESS STEEL |
| 18 | 1 | AN-115 | NAMEPLATE, BLANK, FOR HE,KE,RR,D,CR,PP,SR,SS VALVES |
| 17 | 1 | AY-PYS4 | PISTON OPERATOR, LINKAGE ASSEMBLY, 1/2" VALVES |
| 16 | 1 | V-89 | O-RING, BUNA-N, 70 DURO, AS-110, (REF 3/8 X 9/16 X 3/32), 1" & 2" SUBPLATE PILOT |
| 15 | 1 | PBEC48 | PISTON - ENDCAP, BLIND, 1/2", 3/4" & 1" VALVE |
| 14 | 1 | V-227 | NUT, 3/8-16, HEX, PLATED |
| 13 | 1 | V-270 | WASHER FLAT 3/8" CADMIUM PLATED FOR ALL PISTON OPERATORS |
| 12 | 2 | V-102 | U-CUP, 3 X 2-9/16 X 7/32, NITRILE |
| 11 | 1 | YP48-A | 3" PISTON - 3 POS., 1/2", 3/4" & 1" VALVE |
| 10 | 1 | BRY8 | BARREL, 3/4" & 1" VALVE |
| 9 | 2 | V-166 | GASKET - PISTON BARREL, 1/2", 3/4" & 1" VALVE |
| 8 | 1 | PRCY48 | PISTON - ENDCAP, 3-POS., 1/2", 3/4" & 1" VALVE |
| 7 | 1 | S4 | SPOOL - STANDARD, 2 POS, CLSD CTR, 1/2" VALVE |
| 6 | 1 | V-110 | O-RING, BUNA-N, 70 DURO, AS-114, (REF 5/8 X 13/16 X 3/32), 1/4" SLEEVE, 1/2" SUB, STACK |
| 5 | 1 | PEC48-3 | END CAP, VENTED, 380 AL, 1/2", 3/4" & 1" VALVES |
| 4 | 8 | V-46 | SCREW, 1/4-20 X 3/4, SOCKET HEAD CAP |
| 3 | 2 | ECG48 | GASKET - END CAP, 1/2", 3/4" & 1" VALVE |
| 2 | 6 | V-6 | O-RING, BUNA-N, 70 DURO, AS-216, (REF 1-1/8 X 1-3/8 X 1/8), 1/2" VALVES, 1" SUBPLATE |
| 1 | 1 | B4-1 | BODY, 1/2" SIDE PORT, UPPER PILOTS, ANODIZED |
| FLG | QTY | PART NO | DESCRIPTION |

SECTION A-A
 SCALE 1 : 1
 VIEW FROM 3 PORT SIDE



| | | | | |
|---|-----------------|--|-------------------|--|
| LIMITS ON DIMENSIONS UNLESS OTHERWISE SPECIFIED | | 2-PL DECIMAL ± .01 3-PL DECIMAL ± .005 FRACTIONAL ± 1/64 ANGULAR ± 1/2° | | AAA PRODUCTS INTERNATIONAL 7114 Harry Hines Blvd Dallas, TX 75235 |
| DRAWN: RHuffstetter | DATE: 6/20/2001 | CHECKED: KWaite | DATE: 3/26/2015 | |
| SCALE: 1 : 1 | SHEET: 1 OF 1 | RELEASED: HWomack | DATE: 3/26/2015 | |
| TITLE: 1/2" SIDE PORT, PISTON, 2 POS, FRICTION POS, PISTON RTRN | | PART NO.: PP4 | REV.: A | |

| A | NO. | DATE | REVISION |
|---|-----|----------|---|
| | 1 | 4/9/2014 | REPLACED O-RING TO U-CUP ON PISTON ROD. |

THE INFORMATION CONTAINED WITHIN THIS DOCUMENT IS PROPRIETARY TO AAA PRODUCTS AND MAY NOT BE DISCLOSED WITHOUT PRIOR WRITTEN CONSENT