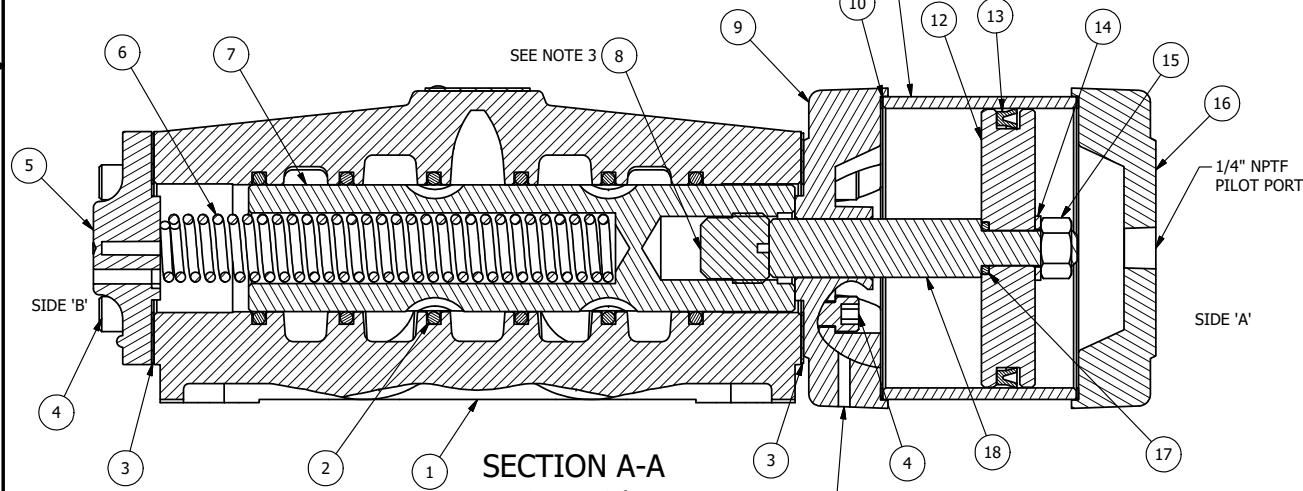
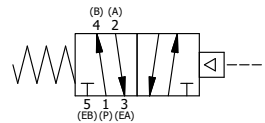


POSITION GASKET ON END OF VALVE SO  
GASKET SEALS PILOT HOLE,  
BOTH SIDES (SIDE 'A' SHOWN)



**SECTION A-A**  
**SCALE 3/4**  
VIEW FROM 3 PORT SIDE

- NOTES:  
 1) ALWAYS GIVE VALVE MODEL AND PART NUMBER WHEN ORDERING PARTS.  
 2) MINIMUM SHIFT PRESSURE OF 12 PSI ON PISTON PILOT PORTS.  
 3) PLUG MUST BE BELOW FLUSH AND UP TO 0.400 DEPTH. VERIFY ASSEMBLY.



| FLG | QTY | PART NO  | DESCRIPTION  |
|-----|-----|----------|--|
| 23  | 4   | V-58     | SCREW, 5/16-18 X 3-1/4, HEX HEAD, PLATED   |
| 22  | 4   | V-104-SS | STAR WASHER 5/16" STAINLESS STEEL.   |
| 21  | 4   | V-105-SS | NUT, 5/16-18, HEX, STAINLESS STEEL   |
| 20  | 2   | V-212    | SCREW, #2 X 3/16 DRIVE, TYPE U, OVAL HEAD, STAINLESS STEEL                       |
| 19  | 1   | AN-114   | NAMEPLATE, BLANK, FOR VALVES WITH SPRINGS OR DETENTS                             |
| 18  | 1   | PR8      | ROD - PISTON, 3/4" & 1" VALVE  |
| 17  | 1   | V-89     | O-RING, BUNA-N, 70 DURO, AS-110, (REF 3/8 X 9/16 X 3/32), 1" & 2" SUBPLATE PILOT |
| 16  | 1   | PBEC48   | PISTON - ENDCAP, BLIND, 1/2", 3/4" & 1" VALVE                                    |
| 15  | 1   | V-227    | NUT, 3/8-16, HEX, PLATED   |
| 14  | 1   | V-270    | WASHER FLAT 3/8" CADMIUM PLATED FOR ALL PISTON OPERATORS                         |
| 13  | 1   | V-102    | U-CUP, 3 X 2-9/16 X 7/32, NITRILE  |
| 12  | 1   | P48-A    | 3" PISTON - 2 POS., 1/2", 3/4" & 1" VALVE  |
| 11  | 1   | BRY8     | BARREL, 3/4" & 1" VALVE  |
| 10  | 2   | V-166    | GASKET - PISTON BARREL, 1/2", 3/4" & 1" VALVE                                    |
| 9   | 1   | PRC48    | PISTON - ENDCAP, 2-POS, 1/2", 3/4" & 1" VALVE                                    |
| 8   | 1   | V-74     | PLUG - SPOOL, 3/4" & 1" VALVE  |
| 7   | 1   | S8       | SPOOL - STANDARD, 2 POS, CLSD CTR, 3/4" & 1" VALVE                               |
| 6   | 1   | CS8      | SPRING - RETURN, 3/4" & 1" VALVES  |
| 5   | 1   | PEC48-3  | END CAP, VENTED, 380 AL, 1/2", 3/4" & 1" VALVES                                  |
| 4   | 8   | V-46     | SCREW, 1/4-20 X 3/4, SOCKET HEAD CAP   |
| 3   | 2   | ECG48    | GASKET - END CAP, 1/2", 3/4" & 1" VALVE  |
| 2   | 6   | V-30     | O-RING, BUNA-N, 70 DURO, AS-220, (REF 1-3/8 X 1-5/8 X 1/8), 3/4" & 1" VALVES     |
| 1   | 1   | B8-1     | BODY, 1" SIDE PORT, UPPER PILOTS, ANODIZED                                       |
| FLG | QTY | PART NO  | DESCRIPTION  |

LIMITS ON DIMENSIONS  
 UNLESS OTHERWISE SPECIFIED  
 2-PL DECIMAL ± .01  
 3-PL DECIMAL ± .005  
 FRACTIONAL ± 1/64  
 ANGULAR ± 1/2°

**AAA PRODUCTS INTERNATIONAL**  
 7114 Harry Hines Blvd  
 Dallas, TX 75235

DRAWN: RMckenna DATE: 9/27/2014 CHECKED: KWaite DATE: 3/26/2015  
 SCALE: 3/4 SHEET: 1 OF 1 RELEASED: HWomack DATE: 3/26/2015

|   |                         |       |
|---|-------------------------|-------|
| TITLE:<br><b>1" SIDE PORT, PISTON, 2 POS,<br/>SPRING RTRN</b> | PART NO.:<br><b>PO8</b> | REV.: |
|---|-------------------------|-------|

THE INFORMATION CONTAINED WITHIN THIS DOCUMENT IS PROPRIETARY TO AAA PRODUCTS AND MAY NOT BE DISCLOSED WITHOUT PRIOR WRITTEN CONSENT