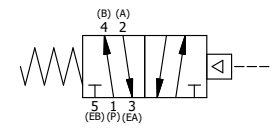


POSITION GASKET ON END OF VALVE SO MOUNTING HOLES ALIGN, BOTH ENDS (SIDE 'A' SHOWN)

- NOTES:
 1) ALWAYS GIVE VALVE MODEL AND PART NUMBER WHEN ORDERING PARTS.
 2) PLACE PRC3 VENT HOLE DOWN.
 3) MINIMUM SHIFT PRESSURE OF 12 PSI ON PISTON PILOT PORTS.

FLG	QTY	PART NO	DESCRIPTION
22	4	V-103	SCREW, 5/16-18 X 2-1/2, HEX HD. PLATED
21	4	V-104-SS	STAR WASHER 5/16" STAINLESS STEEL.
20	4	V-105-SS	NUT, 5/16-18, HEX, STAINLESS STEEL
19	2	V-212	SCREW, #2 X 3/16 DRIVE, TYPE U, OVAL HEAD, STAINLESS STEEL
18	1	AN-114	NAMEPLATE, BLANK, FOR VALVES WITH SPRINGS OR DETENTS
17	1	PR34	ROD - PISTON, 1/4", 3/8" & 1/2" VALVE
16	1	V-89	O-RING, BUNA-N, 70 DURO, AS-110, (REF 3/8 X 9/16 X 3/32), 1" & 2" SUBPLATE PILOT
15	1	PBEC3	PISTON - ENCAP, BLIND, 1/4" & 3/8" VALVE
14	1	V-227	NUT, 3/8-16, HEX, PLATED
13	1	V-270	WASHER FLAT 3/8" CADMIUM PLATED FOR ALL PISTON OPERATORS
12	1	V-115	U-CUP, 2-1/2 X 2-1/8 X 3/16, NITRILE
11	1	P3-A	2 1/2" PISTON - 2 POS., 1/4" & 3/8" VALVE
10	1	BR3	BARREL, 1/4" & 3/8" PISTON VALVE
9	2	V-165	GASKET - PISTON BARREL, 1/4" & 3/8" VALVE
8	1	PRC3	ENDCAP, 1/4 & 3/8" FOR ROD END PISTON OPER. --FINISHED--
7	1	S3	SPOOL - STANDARD, 2 POS, CLSD CTR, 1/4" & 3/8" VALVE
6	1	CS3-4	SPRING - RETURN, (PO), 1/4" & 3/8" VALVES
5	1	SEC3-A	END CAP, VENTED, SPRING BOSS, 380 AL, 1/4" & 3/8" VALVE
4	8	V-38	SCREW, 10-24 X 3/4, SOCKET HEAD CAP
3	2	ECG3	GASKET - END CAP, 1/4" & 3/8" VALVE
2	6	V-39	O-RING, VITON, STD BODY, 1/4" & 3/8" VALVES
1	1	B2-2E	BODY - SOLID, PLAIN, NO PILOTS, ANODIZED, 1/4" SIDE PORT VALVE
FLG	QTY	PART NO	DESCRIPTION

SECTION A-A
 SCALE 1 : 1
 VIEW FROM 3 PORT SIDE



NO.	DATE	REVISION
C	9/11/2012	CHANGED TO SOLID VALVE BODY.
B	7/12/07	ADDED NOTE 3 TO CLARIFY VENT LOCATION.
A	4/19/99	REDRAWN AND CONV TO CAD

LIMITS ON DIMENSIONS UNLESS OTHERWISE SPECIFIED		2-PL DECIMAL ± .01 3-PL DECIMAL ± .005 FRACTIONAL ± 1/64 ANGULAR ± 1/2°		AAA PRODUCTS INTERNATIONAL 7114 Harry Hines Blvd Dallas, TX 75235	
DRAWN: RHuffstetter		DATE: 7/14/1999			CHECKED: KWaite DATE: 3/26/2015
SCALE: 1 : 1		SHEET: 1 OF 1		RELEASED: HWomack DATE: 3/26/2015	
TITLE: 1/4" SIDE PORT, PISTON, 2 POS, SPRING RTRN				PART NO.: PO2	REV.: C

THE INFORMATION CONTAINED WITHIN THIS DOCUMENT IS PROPRIETARY TO AAA PRODUCTS AND MAY NOT BE DISCLOSED WITHOUT PRIOR WRITTEN CONSENT