
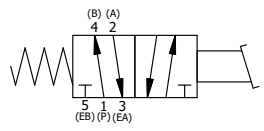

  
 POSITON GASKET ON END OF VALVE SO  
 GASKET SEALS PILOT HOLE,  
 BOTH SIDES (SIDE 'A' SHOWN)

**SECTION A-A**  
**SCALE 1 : 1**  
 VIEW FROM 3 PORT SIDE

NOTES:  
 1) ALWAYS GIVE VALVE MODEL, AND PART NUMBER WHEN ORDERING PARTS.

| FLG | QTY | PART NO  | DESCRIPTION   |
|-----|-----|----------|---|
| 18  | 1   | NSPK-2   | SUBPLATE MOUNTING KIT NAMUR (2 EA V-566 SCREW, 2 EA V-565 O-RING) |
| 17  | 1   | V-548    | O-RING, BUNA-N, 70 DURO, 6MM X 1MM, NAMUR PLUG                    |
| 16  | 1   | V-547    | PLUG, 360 HALF HARD BRASS, NAMUR VALVE                            |
| 15  | 2   | V-212    | SCREW, #2 X 3/16 DRIVE, TYPE U, OVAL HEAD, STAINLESS STEEL        |
| 14  | 1   | AN-114   | NAMEPLATE, BLANK, FOR VALVES WITH SPRINGS OR DETENTS              |
| 13  | 4   | V-162    | SCREW, 10-24 X 5/8, SOCKET HEAD CAP                               |
| 12  | 1   | HC3-1LOC | CLEVIS - POS. C LOCKOUT, 1/4" & 3/8" VALVE                        |
| 11  | 1   | V-48     | PIN, ROLL 3/16 X 9/16, STEEL, ZINC PLATED                         |
| 10  | 1   | V-508    | PIN, ROLL 3/16 X 5/8 ZINC PLATED STEEL FOR 1/4 FOOT ENDCAP        |
| 9   | 1   | FT3      | TREADLE, FOOT, IRON, NICKEL PLT, 1/4" & 3/8" VALVE                |
| 8   | 1   | FE3-1LO  | END CAP - FOOT PEDAL, LOCKOUT, 303 STAINLESS, 1/4" & 3/8" VALVE   |
| 7   | 1   | S3       | SPOOL - STANDARD, 2 POS, CLSD CTR, 1/4" & 3/8" VALVE              |
| 6   | 1   | CS3      | SPRING - RETURN, (EXCEPT HO, KO & PO) 1/4" & 3/8" VALVES          |
| 5   | 1   | SEC3     | END CAP, 304 STAINLESS STEEL, 1/4" & 3/8" VALVE                   |
| 4   | 4   | V-37     | SCREW, 10-24 X 1/2, SOCKET HEAD CAP                               |
| 3   | 2   | ECG3     | GASKET - END CAP, 1/4" & 3/8" VALVE                               |
| 2   | 6   | V-39     | O-RING, VITON, STD BODY, 1/4" & 3/8" VALVES                       |
| 1   | 1   | B2-11E-W | NAMUR INTERFACE, WITH 3/2 CONVERSION, 1/4" VALVE                  |
| FLG | QTY | PART NO  | DESCRIPTION   |

|  |                |  |                 |
|--|----------------|--|-----------------|
| LIMITS ON DIMENSIONS<br>UNLESS OTHERWISE SPECIFIED<br>2-PL DECIMAL ± .01<br>3-PL DECIMAL ± .005<br>FRACTIONAL ± 1/64<br>ANGULAR ± 1/2° |                |  <b>AAA PRODUCTS INTERNATIONAL</b><br>7114 Harry Hines Blvd<br>Dallas, TX 75235 |                 |
| DRAWN: RMcKenna  | DATE: 5/3/2015 | CHECKED: KWaite  | DATE: 5/14/2015 |
| SCALE: 1 : 1   | SHEET: 1 OF 1  | RELEASED: HWomack  | DATE: 5/14/2015 |
| TITLE:<br><b>1/4" NAMUR, TREADLE, 2 POS,<br/>         SPRING RTRN, LOCKOUT C</b>   |                | PART NO.:  | REV.:           |
|  |                | <b>NT02LO</b>  |                 |



THE INFORMATION CONTAINED WITHIN THIS DOCUMENT IS PROPRIETARY TO AAA PRODUCTS AND MAY NOT BE DISCLOSED WITHOUT PRIOR WRITTEN CONSENT

P:\Engineering\Product Valve Assembly\pedal\TO SWING\NT02LO.dwg