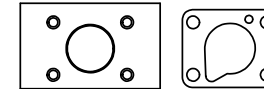
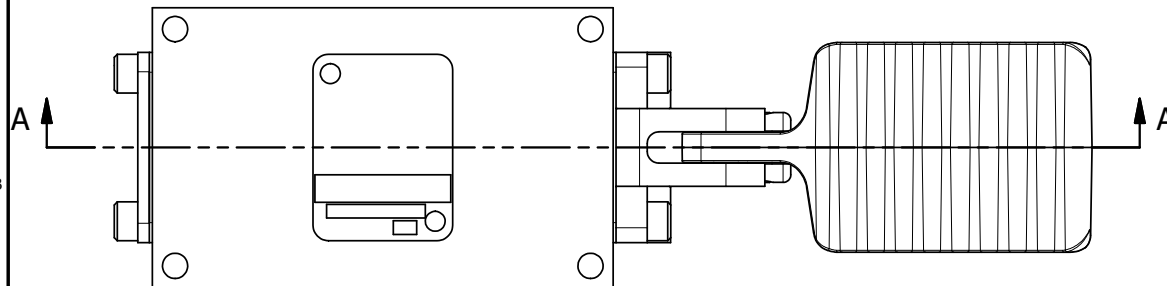


4

3

2

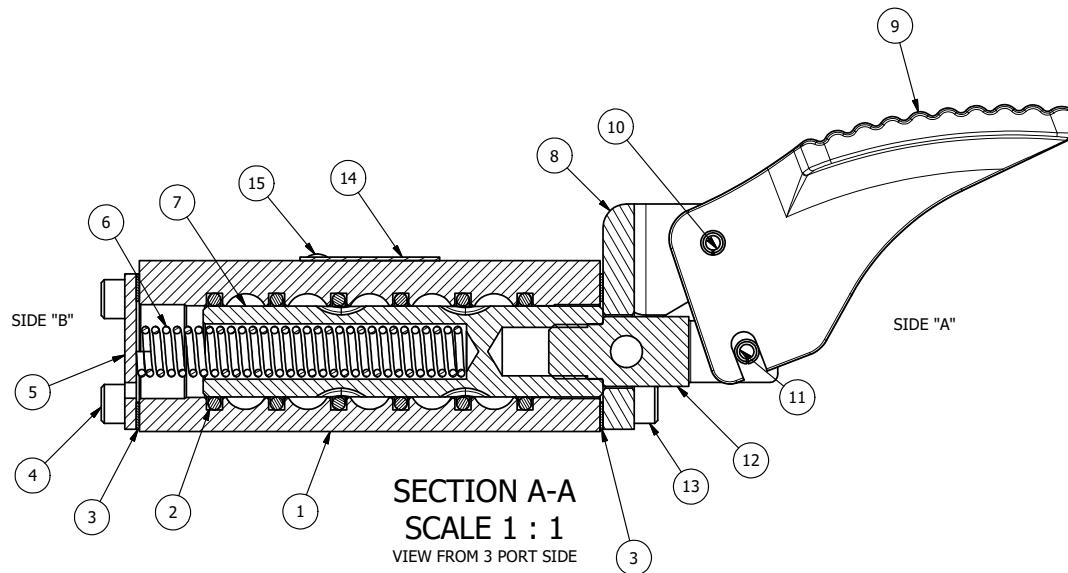
1



POSITION GASKET ON END OF VALVE SO  
MOUNTING HOLES ALIGN,  
BOTH ENDS (SIDE 'A' SHOWN)

#### NOTES:

1) ALWAYS GIVE VALVE MODEL, AND PART NUMBER WHEN ORDERING PARTS.



|     |     |          |   |
|-----|-----|----------|---|
| 15  | 2   | V-212    | SCREW, #2 X 3/16 DRIVE, TYPE U, OVAL HEAD, STAINLESS STEEL      |
| 14  | 1   | AN-114   | NAMEPLATE, BLANK, FOR VALVES WITH SPRINGS OR DETENTS            |
| 13  | 4   | V-162    | SCREW, 10-24 X 5/8, SOCKET HEAD CAP                             |
| 12  | 1   | HC3-1LOC | CLEVIS - POS. C LOCKOUT, 1/4" & 3/8" VALVE                      |
| 11  | 1   | V-48     | PIN, ROLL 3/16 X 9/16, STEEL, ZINC PLATED                       |
| 10  | 1   | V-508    | PIN, ROLL 3/16 X 5/8 ZINC PLATED STEEL FOR 1/4 FOOT ENDCAP      |
| 9   | 1   | FP3      | PEDAL, FOOT, AL ALLOY, 1/4" & 3/8" VALVE                        |
| 8   | 1   | FE3-1LO  | END CAP - FOOT PEDAL, LOCKOUT, 303 STAINLESS, 1/4" & 3/8" VALVE |
| 7   | 1   | S3       | SPOOL - STANDARD, 2 POS, CLSD CTR, 1/4" & 3/8" VALVE            |
| 6   | 1   | CS3      | SPRING - RETURN, (EXCEPT HO, KO & PO) 1/4" & 3/8" VALVES        |
| 5   | 1   | SEC3     | END CAP, 304 STAINLESS STEEL, 1/4" & 3/8" VALVE                 |
| 4   | 4   | V-37     | SCREW, 10-24 X 1/2, SOCKET HEAD CAP                             |
| 3   | 2   | ECG3     | GASKET - END CAP, 1/4" & 3/8" VALVE                             |
| 2   | 6   | V-39     | O-RING, VITON, STD BODY, 1/4" & 3/8" VALVES                     |
| 1   | 1   | B2-2E    | BODY - SOLID, PLAIN, NO PILOTS, ANODIZED, 1/4" SIDE PORT VALVE  |
| FLG | QTY | PART NO  | DESCRIPTION   |

LIMITS ON DIMENSIONS  
UNLESS  
OTHERWISE SPECIFIED

2-PL DECIMAL  $\pm .01$   
3-PL DECIMAL  $\pm .005$   
FRACTIONAL  $\pm 1/64$   
ANGULAR  $\pm 1/2^\circ$



**AAA PRODUCTS  
INTERNATIONAL**  
7114 Harry Hines Blvd  
Dallas, TX 75235

DRAWN: RMckenna

DATE: 5/2/2015

CHECKED: KWalte

DATE: 5/14/2015

SCALE: 1 : 1

SHEET: 1 OF 1

RELEASED: HWomack

DATE: 5/14/2015

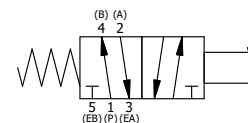
TITLE:

**1/4" SIDE PORT, PEDAL, 2 POS,  
SPRING RTRN, LOCKOUT POS 'C'**

PART NO.:

**FO2LO**

REV.:



THE INFORMATION CONTAINED WITHIN THIS DOCUMENT IS PROPRIETARY TO AAA PRODUCTS AND MAY NOT BE DISCLOSED WITHOUT PRIOR WRITTEN CONSENT

D:\Engineering\Product Valve Assembly\Pedal (FO2LO) (FO2LO).dwg